

05
06

I.R.D. Duhallow



Annual Report

THE SPIRIT OF RURAL IRELAND

Communities in Duhallow



Duhallow - The Land & People

Our area conforms approximately with the ancient barony of Duhallow, West Muskerry and parts of East Kerry, covering the Upper Blackwater River and surrounding hills. It is about 1,800 sq.km (1,000 sq. miles) in area and contains a population of some 30,000 people. Largely rural there are four market towns Rathmore, Kanturk, Millstreet and Newmarket and a number of villages.



I.R.D. Duhallow

James O'Keeffe Institute,
Newmarket, Co. Cork, Ireland.

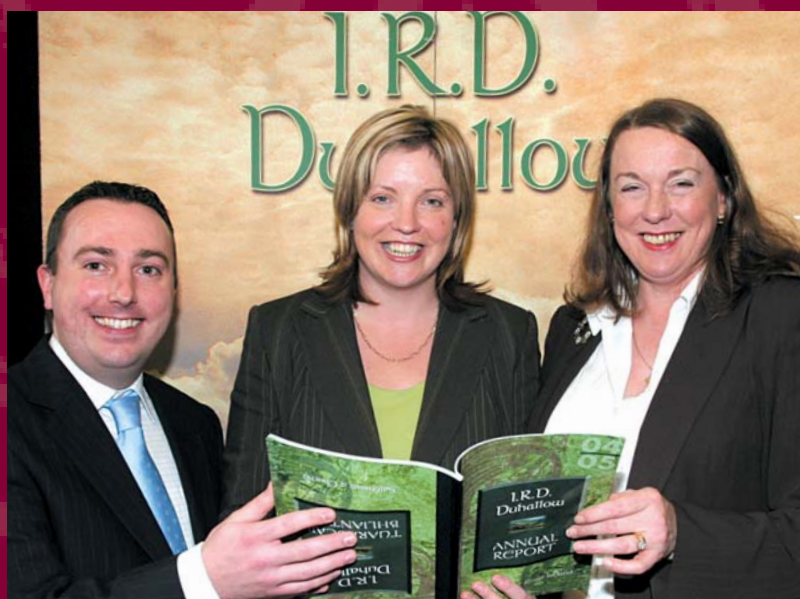
Tel: 00-353-29-60633

Fax: 00-353-29-60694

Email: duhallow@eircom.net

Contents

	Page
Chairman's Address	2
Manager's Report	3
IRD Duhallow Ltd. Company Structure	4
IRD Duhallow Board Members	5-7
Details of Staff	8
LEADER	9
Agriculture	10
Rural Social Scheme	11
Enterprise	12-13
Equality, Disability and Migrants	14-15
Community Development	16-17
Transition to Employment	18
LEADER Sustainable Development	19
LEADER Projects	20-21
LDSIP Projects	22
LDSIP	23
Youth & Education	24-25
CLÁR	26
Rural Transport Initiative	27
Employment and Training	28-29
Childcare	30
Duhallow Community Food Services	31
Tourism and Culture	32
Women's Forum	33
Duhallow Carers Support Group	34
FÁS Community Employment	35
Transnational Partnerships	36-37
Summary of Accounts	38-39
Irish LEADER Network and ELARD	40



Don Crowley, Vice-Chairman, IRD Duhallow, Mary Coughlan, Minister of Agriculture, Maura Walsh, Manager, IRD Duhallow.

Chairman's Address

There is no doubt but that 2006 has heralded a real sense of optimism and confidence for IRD Duhallow and for Partnerships and LEADER groups generally. The European Council has backed the European Commission's proposals for increased funding for rural development from 2007 onwards. New draft guidelines for the mainstreamed LEADER Programme indicate a broader role for IRD Duhallow in local development, with greater support coming from national bodies

A process of cohesion, initiated by Minister Eamonn Ó Cuív T.D. and the Department of the Environment and Local Government has re-affirmed and strengthened IRD Duhallow as the single and integrated local development agency in this area, the boundaries of which have not been changed.

However positive these developments they will not succeed unless Rural & Local Development receives significantly more funding and a broader remit to tackle the infrastructural barriers to inclusion and development in Rural Areas.

As well as chairing IRD Duhallow, I have the privilege to serve as the President of ELARD, the European LEADER Association for Rural Development. I have been continuously impressed by the commitment there is to rural development at a local level throughout Europe, and I am struck by the many innovative approaches that are being piloted, particularly in Central and Eastern Europe. These new groups are absolutely enthused when they come here to Duhallow and see the potential LEADER holds for them provided they are given the same autonomy and support from their ministries as the Irish LEADER groups have got.

This real commitment, capacity and creativity among ELARD members points to the need for the European Commission to resource the ELARD Network, so that it can further the promotion, advocacy, transfer, integration and mainstreaming of the LEADER approach while enjoying the support of a Technical Support Unit which would detail the essence of good rural development practice from the groups.

Here in Ireland, the LEADER Network; CLÉ has convened several events to promote bilateral and multi-lateral transfer of best practice between LAGs, and the realisation of rural development objectives as set out in the government White Paper on Rural Development. I congratulate the out-going chair of CLÉ on his stewardship of the Network, and I welcome the new Chair, Tom O'Donnell from North Kerry.

The Census of Population undertaken earlier this year is likely to confirm many of the positive impacts of IRD Duhallow. While I am generally optimistic about our progress, I remain concerned over the increasing wealth and population gaps that are becoming more manifest within Counties Cork and Kerry and within the state generally. The need to accelerate progress in implementing the European Spatial Development Perspective, National Spatial Strategy and White Paper on Rural Development cannot be over-stated. I am very concerned that the objectives of balanced spatial development, social inclusion and environmental conservation are not adequately incorporated into the plans and practices of a number of public agencies.

One of the best initiatives launched by government to support local communities in depopulated rural areas is the CLÁR Programme. I warmly welcome the recent extension of CLÁR to cover almost all of Duhallow, and I trust that IRD Duhallow, as the body co-



ordinating and delivering CLÁR village & country side enhancement, will have the full support of public agencies in ensuring even greater successes for CLÁR in the future.

The Mallow Sugar Plant was a significant contributor to the Duhallow economy. In addition to the permanent job-losses, almost one-hundred farmers and others from Duhallow, who used to secure seasonal employment there during the winter months will suffer directly as well as those in the haulage business. The Rural Social Scheme at least will alleviate the negative impact on the smaller farmers.

An effective response to the loss of the sugar factory will have to take into account the wider implications. Parallels exist with the closure of ESB and Bórd na Móna plants in The Midlands in the 1990s. Here, an enterprise and community

development fund administered by the local development agencies has been extremely successful, and is a model that should be replicated in Duhallow.

Duhallow's twin strengths of our environment and culture will feature strongly in the area's future development. IRD Duhallow has worked, often against the odds, to conserve our natural resources as a basis for sustainable development, and we will continue to do so. Throughout Europe, areas that have embraced Natura 2000, the network of natural habitats continue to outperform those areas that have succumbed to short term schemes.

I have no doubt but that it is no coincidence that the quantum steps forward made in rural development have happened while we have a separate Senior Ministry for rural and community development.

IRD Duhallow's voluntary board members are committed to excellence in corporate governance, and regularly undertake training and company development programmes. We are also committed to broad rotation, while sustaining the level of experience and continuity necessary to ensure effective operation of the company. welcome the new Board members who join us, Suzanne Campion, Clíona Brown and I thank the out-going members Teresa Sheehan, John Sheehan and Phil Hallinan, and I am glad that they and other former directors continue in contact with the organisation, so that we all benefit from their new experiences, insights and positions.

Finally, I wish to thank my Vice-Chairman, Don Crowley, who despite having a busy schedule of his own is always willing to give his time and expertise to any job, no matter how big or small. I also want to thank the chairs of the working groups and sub-committees who deliver on our strategic plan. As chairman, I have the privilege of and good fortune to work with a loyal, dedicated, diligent and highly-respected manager in Maura Walsh. Maura, the team leaders and other officers of our company work tirelessly and selflessly, and are a huge resource to the company. I was honoured as chair to accept the Excellence Through People award in recognition of IRD Duhallow's commitment to staff development.

The year ahead will no doubt be even busier than the past year but I am confident with the dedication and selfless work of our board and working group members backed up by a dedicated competent staff team that IRD Duhallow will be well equal to the task ahead.

Jack Roche
CHAIRMAN

Manager's Report

The year under review is usually the busiest and most exciting in the rural and local development cycle and this is no exception. With the main programmes drawing to a close reviews are underway and so too is the preliminary work for the next strategic plan. We in IRD Duhallow are indeed fortunate to have the expertise required in-house and have developed an excellent relationship with the National University through some of our staff pursuing post grad courses. Former staff member Brendan O'Keeffe, who has completed his doctorate in NUI Maynooth, has been of tremendous assistance in providing expert analysis of the region.

The Local Development Social Inclusion Programme has enabled us to focus on those most disadvantaged across the community. I wish to acknowledge the tremendous support we have received over the past decade from Pobal, formerly ADM, especially Marion Byrne and her staff, the Liaison Officers Jimmy Lynch and his successor Padraig de Burca.

When we first undertook the programme ten years ago the main issues were long term unemployment and community. Since then we have come to address and target many more sectors including the elderly, small farmers, those with disabilities, education disadvantage, women & childcare, rural isolation, and more recently migrant workers, asylum seekers, people with mental ill health and those affected by suicide. Along with our neighbouring groups in Avondhu and Ballyhoura we are implementing a Transition to Employment Options Programme from the Department of Justice Equality & Law Reform supported by the Department of Social & Family Affairs and the VEC to address the needs of those with mental ill health.

The Ireland Funds which has in the past supported our Rural Meal Service has this year prioritised addressing the scourge of suicide in rural areas and generously supported our initiative here.

LEADER has come of age and is now part of the Mainstream Rural Development Programme. We have received tremendous support from the Department staff, Micheal O'Corcora and Pat Moynan who have steered its implementation also from Mary Hurley in audit and Sean Heneghan and Breda Dooley in the inspectorate.

IRD Duhallow has continued to play an active role in Comhar LEADER na hEireann the Irish LEADER Network and has been elected Secretary for another term. Our chairman Jack Roche is President of the European LEADER Association for Rural Development and has blazed a trail across Europe which has resulted in ELARD doubling its membership since he took office a year ago.

The CLÁR programme has been extended to include practically all of Rural Duhallow. On page seventeen of this report you will see the work outlined.

The Rural Social Scheme has surpassed all targets from both participation, and work- output perspectives. The programme is integrated here in Duhallow with the RSS supporting the social inclusion agenda as well as broader community development. The Back to Education Initiative and the Millennium Partnership Fund for Education have between them addressed the education attainment deficit of many of our communities.

For the first time additional LEADER funds were made available by Minister Ó Cuív during the year. We welcome that initiative of the Minister and his promise that it will be repeated in the current year, so that the "stop go" nature which put a damper on previous European funded programmes will be a phenomenon of the past.



In addition to the Department staff already mentioned I want to pay special tribute to Mr Gerry Kearney Secretary General who, along with his team, has supported so many aspects of our work. The introduction of the Community Services Programme and its recent expansion is just one example of this. We look forward to the next programme

Each year, the Board members of IRD Duhallow devote over 4,000 person-hours to voluntary activity. Our sub-committees, forums and community leaders devote additional countless thousands of hours, to improving the quality of life for people in Duhallow. I welcome the government's commitment to developing social capital, and note the impressive track-record of the existing LEADER and Local Development Groups in supporting volunteerism and civic spirit by providing the variety of vehicles necessary to

involve the maximum number of people and variety of talents rural areas possess.

I thank the Vice chairman Don Crowley who also chairs a number of our key working groups for his expertise, tireless work and contribution to the organisation. I also want to mention Noel Dillon who has assisted in building an even better working relationship with the Local Authority over the past year.

IRD Duhallow has indeed been fortunate in the quality and strength of its leadership. Jack Roche our out-going chairman has been exemplary in his dedication and courage. He has been a tremendous source of support for me personally and for the entire staff. He has invested countless days of voluntary work of such high calibre that money could not buy. His predecessors likewise, and ironically we say each time a chairman completes a term of office that it will be very difficult to fill the shoes they vacate however, each new chairman rises to the challenge. It is also a great source of comfort to incoming chairs and myself that our former chairs have all subsequently served on the board and working groups and supported the organisation in several ways. Jack Roche is a big man in every sense of the word and has an enormous heart fuelling his generosity to the community at several levels. I am delighted that I do not have to say that I will miss him as he has assured IRD Duhallow of his continued participation at board and committee level.

It is easy for me to bring the good news of the Duhallow Integrated Rural Development experience to different countries in particular the ten accession states and the pre accession countries when I can leave the office confident that the work of IRD Duhallow is in the most capable hands. Our Team Leaders, Margaret O Connor in Finance & Administration and Eileen Linehan in Community & Enterprise are the most competent, dedicated managers I have been fortunate to work with. The staff has experienced a number of changes again during the year. We wish our former employees well in their new careers confident that the experience they gained with IRD Duhallow will stand them in good stead and knowing that we have wonderful ambassadors for our work out there.

Once again we have attracted new staff, with the highest of qualifications and dedicated to rural and local development, that has joined our existing team of expert development and administration officers. The staff profiles are on page eight of this report.

The year ahead will be exciting as we and the communities see the future potential of Duhallow as the strategic plan takes shape.

Maura Walsh
MANAGER

IRD Duhallow Ltd. Company Structure

IRD Duhallow is a community based rural development company established in 1989 to promote Rural Development in Duhallow, which covers North West Cork and part of East Kerry.

Main Objective

To establish and to support initiatives directed towards the generation of enterprise for the benefit and welfare of communities in Duhallow who may be deprived or in necessitative circumstances due to rural depopulation, emigration, lack of training, economic deprivation or poor infrastructure. (Memorandum of Association, June 1991)

Governance

IRD Duhallow delivers and implements a wide range of programmes and initiatives on behalf of the Government and the European Commission.

It is imperative that we continue to hone our structures and initiatives to meet the highest public accounting standards. We are

subject to the Ethics in Public Office Act and more recently, the Ombudsman's Office, and meet the requirements of the Irish Languages act.

Excellence Through People

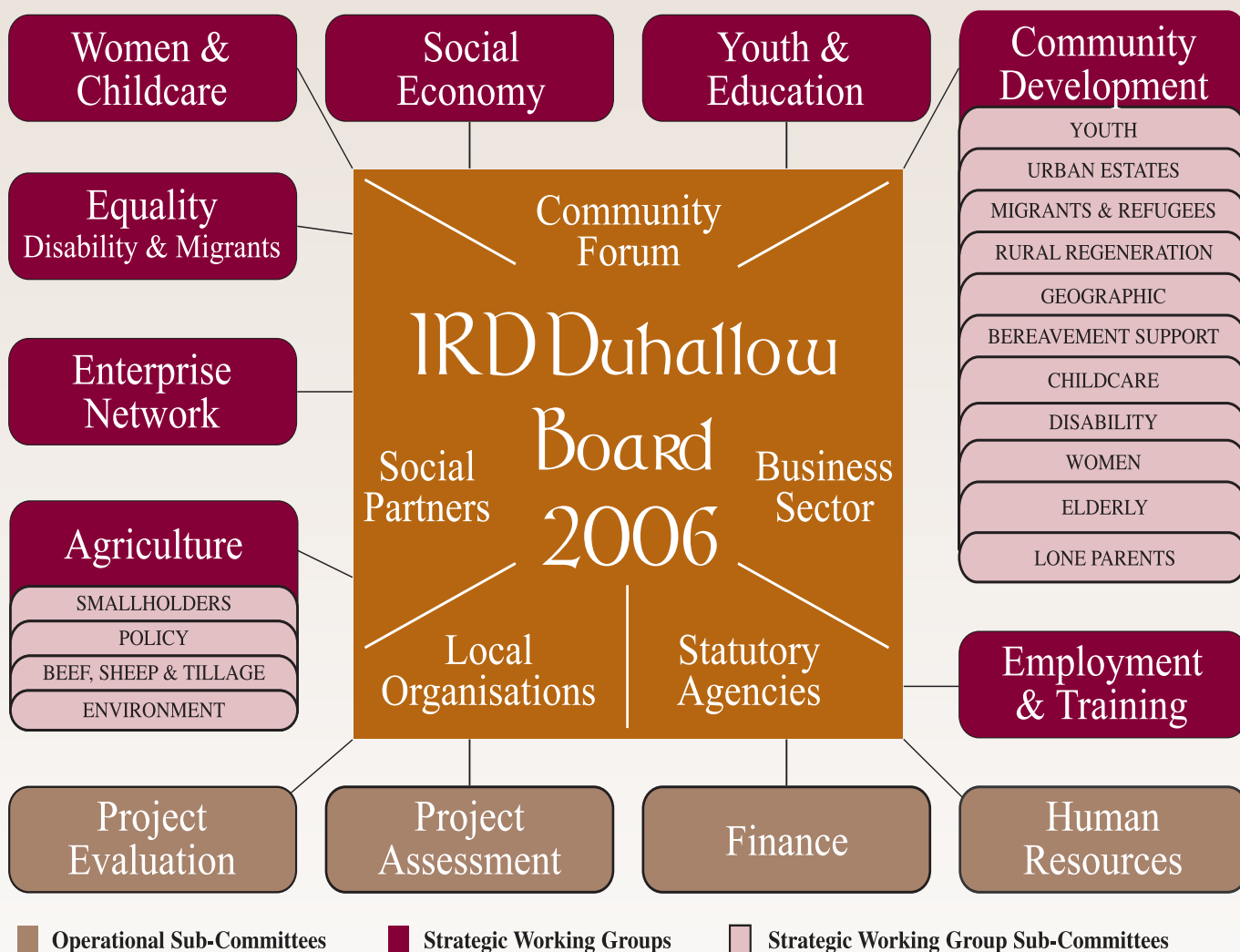
IRD Duhallow has earned the Excellence Through People Award, Ireland's standard for human resource development. The company continues to strive for the highest standards in all of its operations.

Election and Rotation of Board Members

The Board of IRD Duhallow consists of 20 members nominated by the community or state agency and elected at the A.G.M.

The Board Members represent five sectors - community groups, statutory agencies, business sector, communities of interest and social partners.

The company requires that one third of its board resign each year and only half can offer themselves for re-election by the community or sector they represent.



IRD Duhallow Board Members

COMMUNITIES OF INTEREST & SOCIAL PARTNERS

Jack Roche

Jack Roche is the Chairman of IRD Duhallow and President of ELARD (European LEADER Association for Rural Development). He represents the cultural interests of the region on the Board. He also sits on the Project Evaluation, Social Economy, Community Development & Agriculture Working Groups. He liaises annually with Cork County Council and the communities in Western Duhallow on the coordination and completion of the village renewal work under the CLÁR Programme. He represents the Board of IRD Duhallow on Comhar LEADER na hEireann, the Irish LEADER Network.



Don Crowley

Don Crowley is from Castlemagner, Co. Cork. Don is the Vice-Chair of IRD Duhallow. He was elected to the Board in 2002 representing the Farming Organisations as President of Banteer Macra. He Chairs three of IRD Duhallow's Working Groups, namely, Youth & Education, Employment and Training and Finance. He is a member of the Human Resources, Social Economy and Project Evaluation Working Groups. He is very committed to rural development with particular emphasis on the significant role our youth have to play in sustaining rural development. Don is a lecturer in Business Information Systems and Management with Cork Institute of Technology.



Caroline Fleming

Caroline was elected to the Board of IRD Duhallow in 2005. She is the newly elected Chairperson of the Duhallow Women's Forum. The Women's Forum is affiliated to the National Women's Council and actively promotes the role of women in society. Following the very successful Women's Calendar in 03, the Forum has engaged in marking the contributions of Duhallow women to Rural Development. Caroline lives in Banteer and is actively involved in her local community.



Judy O'Leary

Judy O'Leary is the Chairperson of the Women and Childcare Working Group and is also a member of the Human Resources Working Group. Judy is a key member of the Duhallow Women's Forum. She is actively involved with the Irish Country Women's Association and is Sports Officer of the Cork Federation. She is also Secretary of the National Consumer Committee of ICA in the Cork Federation. She has contributed significantly to IRD Duhallow's gender equality policies and has worked hard to achieve gender balance on the board and sub structures of IRD Duhallow.



LOCAL AUTHORITIES

Patrick Buckley

Patrick Buckley was appointed to the Board in September 1999 by Cork County Council. Pat is a member of Cork County Council and was re-elected in June 2004. He is a member of our Enterprise Network and our Community Development Working Group. As well as providing a vital link between Cork County Council and IRD Duhallow, Pat is a committed member of the Banteer Community Council and Community Sports field.



Tom Sheahan

Tom Sheahan is a member of Kerry County Council, elected in June 2004, and was recently appointed to the Board of IRD Duhallow. Tom is an active member of his local community in Rathmore, with a special interest in rural regeneration and cultural activities. He is a member of the Strategic Policy Committee of Kerry VEC, the Rural Water Services Committee and the Golden Mile Project in Rathmore. He supports the expansion of ICT to rural communities. He is also member of Cumann Luachra an historical society in the area.



IRD Duhallow Board Members

STATUTORY FORUM

Suzanne Campion

Suzanne Campion was appointed to the Board of IRD Duhallow in December '05 and represents The Southern Regional Fisheries Board where she is Assistant Chief Executive Officer. Suzanne is a member of the Southern and Eastern Regional Assembly's Agriculture and Rural Development Sub-Committee, the County Waterford Heritage Forum and the Regional Working Group of Midland Regional Authority's Water Tour project. Suzanne has worked as a manager and accountant in both the public and private sectors, primarily in the agri-food industry, hotels and developments and is currently actively involved in the management, protection, development and conservation of the rivers/habitat of the rivers of the Southern Region.



Michael Manning

Michael Manning is a member of the Board since February 2001 and represents Cork Kerry Tourism. He is a Chair of the Human Resources Working Group and is also a member of the Project Evaluation Working Group. Michael's presence on the Board ensures a coordinated approach between IRD Duhallow, Fáilte Ireland and the Regional Tourism Authority in the development of sustainable tourism strategies for the Duhallow Region. Michael has worked hard to encourage Rural Villages to improve their image by competing in the Tidy Towns competition.



Noel Dillon

Noel was appointed to the Board in 2005. A former Manager of Cork County Council, the largest local authority area in Ireland, he brings a wealth of managerial knowledge and experience. In his time as County Manager, he introduced a number of progressive schemes including: the Village Renewal Scheme, County Arts Project, Planning Policy and was also Chair of the County Strategy Group. He was Chairman of the Library Council and board member of the NBA, the Ordnance Survey and the Devolution Commission. Noel is chairman of the Social Economy Working Group



Barra Ó Briain

Representing the State Agency Sector, Barra Ó Briain joined the Board in 2003. He is the Chief Executive Officer of County Cork Vocational Education Committee and is also a member of the State Examinations Commission and the National School Accommodations Commission. He is a member of IRD's Social Economy Working group. He has a particular interest in the promotion of our native culture and heritage and supports Lifelong Learning opportunities and initiatives as well as programmes in support of the disadvantaged throughout the county region.



Michael Doyle

Michael represents Coillte, the state Forestry agency, on the IRD Duhallow Board since 1991 and was reappointed again last year. He is Chair of the Equality, Disability & Migrants Working Group and is also a member of the Project Evaluation and Employment & Training Working Groups. Michael liaises with the Sports Council of Ireland on the maintenance of the Duhallow Way, our long distance walking route.



Jerry Donovan

Jerry was appointed to the Board of IRD Duhallow in February 2001 and represents Teagasc, the National Advisory Service for farmers, he has been re-appointed again this year. His presence on the Board ensures complementarity between the two organisations in our dealings with the agriculture sector. Jerry is a member of the Employment & Training Working Group and also is a member of the Agriculture Working Group. Jerry is a member of the Board of Kanturk Credit Union.



BUSINESS SECTOR

Pat O'Sullivan

Pat O'Sullivan is a native of Rathcoole and has worked as sales/technical manager at Avonmore Electrical Co. Ltd. since 1977. From the experience gained in this work he assists young entrepreneurs in the Duhallow region through his participation on our Enterprises Network and Mentoring Panel. Over the years he has been actively involved in many sporting fields including Gaelic football and hurling, soccer, angling, road bowling and in latter years golf.



John Moynihan

John Moynihan is a founder member of IRD Duhallow and a former Chairman. He is Chair of the Enterprise Development Working Group, which supports Duhallow business people and is a focus for networking and training. He is also a member of the Human Resources Working Group. John represents IRD Duhallow on Kerry County Development Board. He is very involved in the development of East Kerry, which is within IRD Duhallow's catchment area.



IRD Duhallow Board Members

COMMUNITY FORUM

Pat Keane

Pat Keane represents the North Eastern Duhallow Community Forum and was elected to the Board at the 2001 AGM. He was re-elected for another three-year term in 2004. Pat is Chair of the Project Assessment Working Group and is also a member of the Community Development and Agriculture Working Groups. Pat is very active in his local community of Freemount. Pat is an active member of the Duhallow Beekeepers Association, he organises training for its members and promotes the product widely.



Anne Maria Bourke

Anne Maria Bourke has been representing the North Eastern Duhallow Community Forum since 1996 and was re-elected in June 2004 to serve another term. Anne Maria sits on the Youth and Education and Community Development Working Groups. She is Principal of Liscarroll National School, is an active Community Leader and serves on the Committee of Castlemagner Music Society. She also sits on the Board of Management of Scoil Mhuire Secondary School and is an avid bridge player.



Billy Murphy

Billy has been representing the South Eastern Duhallow Community Forum since 2001 and was re-elected in 2003 and 2006. He is Chair of the Project Evaluation Working Group and is also a member of the Finance, Employment & Training and Community Development Working Groups. He is an active member of Lyre and District Community Council. Billy represents the Board of IRD Duhallow on Cork County Development Board. He is an employee of Cork County Council.



Cliona Browne

Cliona was elected to the Board of IRD Duhallow this year to represent the South Eastern Duhallow Region. She is in her 4th year as Chairperson of Kilcorney Community Council. Cliona is an active member of her local community and is very involved in Kilcorney Feis and Community Gym. Cliona has worked diligently with her community council to improve the appearance of her village under the CLÁR & LEADER Programmes. Cliona is a general nurse in care of the elderly and is also a manual handling instructor.



Nora Dennehy

Nora was first elected to the Board in 1998 representing the Community Forum of Western Duhallow and was re-elected in 2002. Nora is Chair of the Social Economy Working Group and is also a member of the Finance and Community Development Working Groups. She represents employers on the Duhallow/Sliabh Luachra Social Economy Working Group. Nora is committed to the promotion of Social Enterprise. She chairs the Boards of Duhallow Community Food Services and Duhallow Area Rural Transport.



Dan Murphy

Dan was elected to the Board by the Western Duhallow Region in 2005. An active community volunteer in his native Boherbue, Dan is a member of Bohebue Community Development, CLÁR and the Community Creche Project. He is also active in the GAA and trains juvenile football teams. Dan is a member of the Community Development Working Group.



Details of Staff



MARGARET O'CONNOR, MAAT

Margaret is the Accounts and Administration Team Leader with IRD Duhallow since 1997. She is responsible for the establishment and maintenance of the financial systems and procedures. She is also responsible for the financial control of the programmes being administered by IRD Duhallow. She prepares Financial Reports for Management and Board of Directors as well as various Government agencies.



EILEEN LINEHAN, B.A. (Econ. & Geog.); MBS (Business Economics), DPM

Eileen joined IRD Duhallow in June 2001 as Projects Co-ordinator and was promoted to Community & Enterprise Team Leader in 2004. She coordinates LEADER+ and the Local Development Social Inclusion Programmes. Eileen sits on the Social Economy Working Group and supports the Project Evaluation and Project Assessment Working Groups.



CATHERINE CROWLEY, B.Sc (Food Business), M.Sc. (Food Marketing)

Catherine was appointed Enterprise Development Officer in November 2002. She is responsible for implementing the Enterprise measures of LEADER and LDSIP. She also facilitates Business Training Programmes, Business Mentoring and Networks for the Business Community. She is the staff resource for the development of Tourism initiatives and co-ordinates the Enterprise Development and Craft working groups.



HELEN O'SULLIVAN (B.Soc.Sc., M.Soc.Sc)

Helen was appointed Community Development Officer in April 2005. She supports development, capacity building and networking communities, women's groups, the elderly, carers and the bereavement support programme. She promotes CLÁR Village Enhancement Programme and also promotes Estate Management and Residents Associations in Duhallow.



DIANE DEVITT, B.A. , Dip. In HR Mgmt. CIPD, Dip in Professional Recruitment Services

Diane was appointed as Equality, Employment and Training Officer in March 2005. She works closely with both the unemployed and underemployed in setting up training courses and job placements and offers a service to both employers and employees through our Job Centre. Diane also promotes equality and is staff resource to both the Equality and the Employment and Training Working Groups.



RICHARD O'BRIEN, Diploma (Philosophy & Arts) Diploma (Theology), Certificate (Management Practise),

Richard joined IRD Duhallow in February 2006 as the Employment Facilitator on the Transition to Employment Options Programme. Richard is responsible for the setting up of this programme providing one to one support to the participants involved. Previously, Richard worked for the Local Employment Service and therefore brings much practical experience to his new position.



MARION O'SULLIVAN, B.A. (Business Studies and Tourism)

Marion joined the staff of IRD Duhallow in December 2005 and is employed as the Youth & Education Officer. Marion is responsible for administering the LDSIP Youth Initiatives and the Millennium Education Fund. She is also involved in two Transnational Projects. Marion facilitates an extensive range of school and community based programmes that meet the needs of young people in the area.



CLARE O'KEEFFE, B.A. (Economics & Sociology), Dip.Soc. & Comm. Studies, Green Cert in Ag.

Clare joined IRD Duhallow in February 2005 as the Small Holder Development Officer. Her objective is to grow the Focal Farmer Programme. Clare actively promotes training in alternative and complementary enterprise in conjunction with good farming practice and promotes participation in REPS and the Rural Social Scheme.



EILISH MURPHY, Certificate (Legal Secretarial Studies), ECDL.

Eilish was appointed Office Administrator in February 2006 and brings to the position a wealth of administrative experience gained in the medical and legal sectors. She works closely with the Manager and assists in the production of the Annual Report. She is also responsible for setting the itineraries and sourcing accommodation for study visits to Duhallow.



DERVAL CORBETT, ECDL

Derval, employed as Clerical Officer since December 1999, based in Reception and Administration Office. She deals with general enquiries, administration, and oversees maintaining stationery orders. She is responsible for preparing the monthly Board Pack. She also compiles and produces the monthly newsletter which is circulated to over 7,000 homes in Duhallow.



MARIE FLEMING, Diploma in Business Skills, PR and Marketing

Marie joined IRD Duhallow in May 2006 as Clerical Officer. She is based in the Reception and Administration Office. In addition to dealing with general queries in the front office she also provides administrative assistance to the Development Officers.



HELEN O'DONOGHUE, ECDL

Helen joined IRD Duhallow as part-time Accounts Clerk in February 2002. She is responsible for processing invoices and is involved in the preparation of weekly and monthly accounts and lodgements. Helen is also involved in completing reports for submission to State Departments.



CARMEL MURPHY, MIATI

Carmel joined IRD Duhallow as an Accounts Administrator in September 2004. Her job includes the preparation of weekly and monthly accounts for LEADER+, MRDP, LDSIP, RTI, CLE and RSS. She also assists in the compilation of month end reports for the Manager and Board of Directors. She prepares financial statements for Comhar LEADER na hEireann.



KATE KELLY, MIATI

Kate commenced work with IRD Duhallow in September 2005. Kate is responsible for preparation of weekly and monthly accounts and completes reports submitted to Pobal on a quarterly basis. She also assists in the compilation of financial reports presented to the Finance Board on a monthly basis.

LEADER



Minister for the Department of Community, Rural & Gaeltacht Affairs, Éamon Ó Cuív addresses LEADER groups at the National Ploughing Championships.

LEADER the acronym from the French - Liaison Entre l'Action de Développement et de l'Économie Rurale which translates as Links between Actions for the Development of the Rural Economy has been in operation in Ireland and Duhallow for almost fifteen years.

The Irish LEADER programme has been exemplary in Europe in its adherence to the LEADER principles of the Bottom-up, Area based, Local action group, Integrated Multisectoral, Innovative, Transnational and with Financial Autonomy. This adherence to the essence of the LEADER method is a credit to the Local Action Groups that have implemented the Irish LEADER programme but the credit is also to be shared with our Minister for Community Rural and Gaeltacht Affairs, Éamon Ó Cuív and his predecessors whose policies enabled LEADER to develop and flourish in Ireland.



Updating LEADER companies on recent development at European level is Donal Coleman, Department of Community Rural and Gaeltacht Affairs who has been involved in negotiating the rural development strategy 2007-2013.



Bill Aherne, Department Inspector for LEADER from 2001-2005 receiving a presentation for Maura Walsh, Manager on his retirement.

The integrated, multi-sectoral approach of LEADER has encouraged the development of local micro-enterprises in many sectors which are providing alternative sources of income for farmers, and the option of self employment for others. The many small food businesses that are flourishing in niche markets are but one example. The strong presence of LEADER funded projects at national events like the Ploughing Championships in further evidence of the potential of LEADER.



Former Board member Conor O'Flynn, receiving a presentation from IRD Duhallow to mark his retirement from the Board.



Department Inspector, Breda Dooley visiting LEADER funded project, Glen Foods Ltd, Newmarket, pictured here with Mossie Anglad, Proprietor.



Jerry Collins of Autoroller Manufacturing Ltd explains the manufacturing process of garage doors to Denis Withers, Project Assessment Working Group, IRD Duhallow.

The establishment of the Local Action Group which has developed its capacity to deliver on broader Integrated Rural Community Development is probably its greatest legacy. The many positive outcomes and local impact of the Duhallow model of Integrated Rural Community Development are outlined in the table below:

Our chairman has used every opportunity to impress on national and European policy makers the urgency of reversing rural decline. He has called for a significant increase in the funding going into LEADER and Local Development.



Deirdre Maloney, Department CRGA, Eileen Linehan, IRD Duhallow, Karen Lynn Dept, CRGA, Frances White, DGAgri, European Commission and Maura Walsh IRD Duhallow at the IRD Duhallow Offices

Since its inception IRD Duhallow has:-

- Created 780 new jobs
- Sustained enterprises providing employment for over 1,100 workers
- Levered €36.3m worth of resources into Duhallow
- Provided over 3,500 training places
- Placed over 500 individuals in employment
- Facilitated the creation of over 500 new childcare places
- Supported the work of 96 community and voluntary groups
- Enabled networking and co-operation among communities
- Funded over 570 projects undertaken by the community and voluntary sector
- Assisted 26 publications
- Convened 50 seminars and conferences to enable Duhallow people to have a say in development issues
- Developed 25 new tourism amenities and visitor attractions in Duhallow and assisted the establishment of 15 new accommodations units
- Empowered over 5,000 young people to become involved in development projects
- Initiated support projects in 18 schools
- Carried over 21,000 passengers per annum in the new rural transport service
- Developed transnational linkages between Duhallow and 22 countries
- Worked with statutory bodies to ensure on going development of Duhallow's infrastructure
- Represented Duhallow's interests at regional, national and EU fora
- Implemented 26 national and EU programmes through a single administrative structure

Agriculture



Providing Information on the Services available for farm families in the Duhallow area were from left, Fiona Hayes, Development Officer, Office of Community & Enterprise, Cork County Council, Michelle Melia, Comhairle, Eileen Linehan, Community & Enterprise Team Leader, IRD Duhallow and Clare O'Keeffe, Low Income Smallholder Officer, IRD Duhallow.

Clare wins Nuffield Scholarship

Clare O'Keeffe did Duhallow proud when she won the coveted Nuffield Scholarship this year. Established in 1947 the Nuffield Farming Scholarship Trust is dedicated to developing leadership in farming and rural industries. Clare will spend eight weeks on study visits which includes China and New Zealand and concludes her study on farming in transition drawing also on her experience in Duhallow.

Smallholder Programme

Branded in Duhallow as the Focal Farmer Programme and part of the Local Development Social Inclusion Programme, IRD Duhallow's targeted response to the needs of small farmers has continued apace during the year with new initiatives being added. The options and viability for some small holders has necessitated the inclusion of a qualified business coach as part of the Small Holder Programme. This offers a one to one confidential and safe opportunity to each member to review his or her options, choices and plan for a profitable farming enterprise.

The expansion year on year of the Small Holder Programme highlights the positive benefits to the agricultural community of Duhallow. Milk recording remains consistently in demand while the growth of the AI usage to improve the breeding stock of the smaller holders has increased. The age profile of the participants in the Small holder programme is very positive for the future of farming in Duhallow. The Smallholder programme offers a variety of services which includes soil and silage sampling subsidised milk recording and AI, Financial and business consultation.

Integrated Target Group Plan

As Part of the County Development Board Strategy in Cork the Social Inclusion Measures Committee has selected Smallholders as its target group for an integrated response.

In North Cork a directory of Services and Supports for farm families has been launched and is available free to all households. The booklet is a convenient 'all in one' source of information with telephone contacts for all farm homesteads in the Duhallow region. The launch of the booklet included a series of information evenings for farmers and their families through out the region. IRD Duhallow hosted two exhibitions at The Glen Theatre, Banteer and in Boherbue the exhibitors included Coillte, Citizens information Service, FÁS, HSE, Department of Agriculture and Food, Department of Social and Family Affairs, and Duhallow Bee Keepers Association.



Minister Mary Coughlan discussing the future of farming in Duhallow on her visit to IRD Duhallow offices in October.



Petting the Pig - Locals attending the farmers market held in Boherbue in April. The event was held in order to maintain the market rights of the town and may become an annual event as a result of the success this year.



Attending the Boherbue Farmers Market were from left, Irene Ryan, Fr. Jim Kennedy, PP Boherbue, Louis McCarthy, Phil O' Sullivan, Catherine Sheahan and Clare O' Keeffe, Low Income Smallholder Officer, IRD Duhallow.

Duhallow Farmers Market

The LEADER Food village at the National Ploughing championships was a resounding success. Duhallow Farmers Market hosted a stall of local produce, with the best of Duhallow baking and culinary delights. The back up support of members' families ensured the display was well stocked and the crowds were offered samples of real home made food from early morning until late.



Gerry Kearney, Secretary General, Department of Community, Rural and Gaeltacht Affairs, visiting the Duhallow Farmers Market, Kanturk with market suppliers Donie O' Sullivan & Mary Daly.

Duhallow Farmers Market

provides small holders with the opportunity to diversify to a niche product development for example fruit and vegetables, organic and conventional meats and poultry, honey production, cheeses, yoghurts, home baking and preserves. The on farm diversification has a positive income effect for the primary producer while offering customers the opportunity to purchase fresh wholesome local produce.

By providing a suitable location with easy access consumer demand for quality local and speciality foods continued to grow.

Mr. Gerry Kearney, Sec. General at the Department of Community, Rural and Gaeltacht Affairs officially opened the market. Local Ceolteoiri musicians and dancers warmly entertained the crowd as the smell of fresh home baking wafted through the air.

The Duhallow Beekeepers

Had an eventful year being well represented and actively involved at the International Apimondia congress in Dublin in August. A group of enthusiastic bee keepers from Cookstown & Western Shores Area Network visited the Duhallow Bee keepers for an information transfer working day. This mutually beneficial event highlighted the variety of sales options and the value of customer relationships with the primary producer.

Adding value to honey through improved marketing systems that includes a new 'Duhallow Honey' label were initiated. All honey produced from members of the Duhallow Beekeepers' Association will be easily identifiable as the label depicts Kanturk Castle with a golden blossom and an active honey bee. Information evenings on bees wax products were very successful as this niche quality strategy develops.



Donie O'Sullivan, an active member of Duhallow Beekeepers' Association, displaying the delights of Duhallow Honey to his grandson Jack O'Sullivan.

Rural Social Scheme



RSS Supervisors, from left: Ita Hickey, Carmel Mullane and John Brosnan

BACKGROUND

The rural Social Scheme was launched by Minister Éamon Ó Cuív in Duhallow in July 2004 and was the first Rural Social Scheme in the country. Eighteen participants joined the scheme immediately. By March 2005, 28 participants had joined. There are now almost 50 participants across three schemes with strong interest still being shown by farmers in the region. The scheme generates an annual income of over €750,000, in wages to qualifying farmers in Duhallow.



Danny Sheehan, RSS participant installing smoke alarms in community buildings



RSS participant Mary Golden doing a mail shot to smallholders in the Duhallow area.

BENEFITS OF THE RSS TO COMMUNITIES

Duhallow Way: Duhallow is fortunate to have 29 kilometres of way-marked walk, which forms part of the Irish East to West Coast and the Bulgaria to Atlantic European E9 walk, goes through Duhallow. It has been upgraded through the Rural Social Scheme including the installation of large stiles, 20 new foot stiles and a large number of markers. Hi Visibility Reflectors are being fitted to all markers. Walkways are inspected regularly by RSS team who have sought and received the co-operation of many land-owners. The walk is inspected annually by the Irish Sports Council and Certificates of Achievement have been awarded for each year since

O'Sullivan Bere Walk: A long distance way-marked walk tracing the historical march of the great O'Sullivan Bere from West Cork to Breifne is planned to be completed this year. It will travel right through Duhallow from the south, intersecting with the Duhallow Way outside Millstreet. the RSS commenced.



One of the large stiles put in place on the Duhallow Way Walking Route by participants on the RSS.



Charlie O'Riordan and Gerry O'Sullivan, RSS participants, erecting a stile on the Duhallow Way Walking Route.



Patrick Fleming & Dan Joe Murphy, working on the upkeep of bridges throughout Duhallow.



A footstile on the Duhallow Way put in place by RSS workers.

National Tree Week: National Tree Week took place between the 5-11 March. A substantial number of Native Irish Tree saplings were donated by the Local Authority to IRD Duhallow. These saplings included Oak and Ash and Beech. These were distributed to Community groups in the Duhallow region and RSS participants assisted the communities with the planting. This initiative which was implemented in conjunction with Cork County Council will have a most positive impact in Duhallow's environment.

War Memorials: There is a number of War of Independence Memorials located throughout Duhallow. These memorials are of major importance to the communities as the centenary celebrations approach. In response to the community requests RSS participants have cleared the surrounds and power washed the monuments.

Estate Management Programme:

Through the Local Development Social Inclusion Programme, IRD Duhallow has supported residents of Local Authority Estates to engage with the Local Authority on the management and maintenance of their estates. The Rural Social Scheme is enhancing this programme through painting, landscaping and supporting the residents and the local authority in improving the overall appearance of their estates.



Pat Fleming, laying footpaths in Gneeveguilla Graveyard as part of the Rural Social Scheme.



Billy Kelleher, RSS participant power washing at Cullen N.S. which is part of Pilot School Cluster and one of the six primary schools in the CLAR area which have been painted.

Supporting Rural Schools:

Significant assistance has been provided by the Rural Social Scheme to the smaller National Schools, particularly in the CLAR areas. Schools have been power washed and painted outside and in much to the acclaim of the boards of Management, Teachers and Parents of these schools. Schools completed to date include Bweeng, Hollymount, Gneeveguilla, Knocknagree and Ballydesmond.

Community Projects:

Maintenance work is ongoing in a number of the Community facilities throughout the Duhallow region. This includes general maintenance, painting and repairs. Rathmore Village and GAA pitch are also fortunate to have Rural Social Scheme workers to maintain their grounds, which are undergoing renovation work at present. The Footpath project between the two parts of Rathmore village is progressing well with concrete kerbing being installed by Kerry County Council.



Mary Kelleher supporting Millstreet Local Television, provides a copy of a recent programme to Breda Cronin.

Enterprise



Attending the Women in Enterprise conference organised by the Duhallow Women's Forum were Back row from left: Helen O' Sullivan Community Development Officer, Patricia Kennedy, Lecturer on Social Policy, UCC, Giana Ferguson, Entrepreneur, Gubene Cheese, Deirdre Fox, CLE Co-ordinator and Eileen Linehan, IRD Duhallow. Front row from left: Therese Murphy, Chairperson of the National Women's Council of Ireland, Caroline Fleming, Chairperson of Duhallow Women's Forum and Nicola McMahon, LDSIP funded entrepreneur.

A Word from John Moynihan, Chairman of Enterprise Working Group:

Our mission is to service the region's economic development by supporting the creation of new enterprises as well as assisting existing businesses with diversification, modernisation and innovation. With this aim, IRD Duhallow implemented a variety of initiatives to support and develop rural enterprises in the Duhallow area. For example, the LEADER and Local Development Social Inclusion Programme gave capital support for the creation of innovative enterprises and diversification of existing economic activities. In addition, IRD Duhallow organised a number of business training programmes to support local entrepreneurs in promoting economic development and to support small enterprises in the locality. The Enterprise working group promotes networks of knowledge and expertise, it supports training and endeavours to identify and address the main issues facing rural entrepreneurs.



Ray O' Leary, Catherine Crowley, Enterprise Development Officer and Billy Sheehan of the South West Regional Authority attending an information night on Broadband in Millstreet

Broadband for Business

The County and Group Broadband Scheme, launched in 2004, promotes broadband access in rural communities of less than 1,500 people. IRD Duhallow is working in partnership through the County and Group Broadband Scheme to encourage the provision and usage of broadband in Duhallow. We acknowledge the support and guidance of Billy Sheehan of the South West Regional Authority and Gerard Leahy of Nad in preparing our submission. Irish Broadband and PermaNet are contracted to service broadband to the area.

Broadband is of strategic importance because of its ability to accelerate the contribution of Information Communication Technology to economic growth in all sectors. In addition, it enhances social and cultural development and facilitates innovation for a competitive IT strategy going forward. The working group will continue to promote awareness of the social, educational and business benefits of broadband. Some of the benefits in general include faster internet and e-mail access, the ability to make phone calls while online, a flat monthly charge and an 'always on' connection.



Catherine Crowley, Enterprise Development Officer and Michael Phelan of IMCS reviewing network opportunities under the FAS Services to Business Competency Development Programme.

Enterprise Training

A range of training programmes were organised throughout the year with over one hundred people attending. The FÁS Start Your Own Business courses, certified by the Institute of Leadership and Management, encouraged new business ideas and assisted many participants to move beyond the planning stage and into the marketplace. The business workshops featured modules on improving entrepreneurial skills and a number of new business management workshops are planned for autumn 2006. The participants' reaction to all courses was overwhelmingly positive and many engaged in invaluable network opportunities, which is a priority for the enterprise strategy going forward. The computerised SortMyBooks courses equipped participants with the software and training needed to manage their books effectively. Participants were also trained on how to produce computerised reports and invoices on customers, sales, debtors, profit and loss, purchases and sales analysis.

Duhallow Mentor Programme

The Mentor Network provides customised individual support for business at all levels of their development and growth. From start up enterprises to businesses in transition and in the process of diversifying, mentoring acts as a vital business development resource to achieve success. IRD Duhallow's mentor initiative continues to play a huge role in enterprise development thanks to the willingness of experts from various areas of business and entrepreneurship, to volunteer to support new businesses.



Stephanie O'Sullivan receiving solid advice from Sheila Brosnan of the IRD Duhallow Mentor programme.

Businesses in transition and in the process of diversifying have availed of the FÁS Business Development mentor programme to propel their enterprise growth. The working group has worked in partnership with FÁS and in particular with Martina Burke, Assistant Manager of the Services to Business Competency Development Programme, to provide and fund these programmes.

NURTURING BUSINESS DEVELOPMENT IN DUHALLOW

Glen Foods Ltd

Located in Newmarket, Glen Foods is a food processing and distribution company which supplies quality dairy and convenience foods to a wide range of customers around the country. With the support of Catherine Crowley, Enterprise Officer, Glen Foods accessed LEADER funds to purchase an innovative Flow wrap packaging machine and a new weigh price labeller machine. These machines enable automatic labeling of the Glenlara cheese brand. The new packaging, coupled with an innovative label design with an easy-opening tear-back, has created greater shelf impact, improved the shelf life of the product as well as improving the economies of scale and growth potential of the company. The company also received support to showcase at the IFEX exhibition under the LEADER Food Village.



Billy Murphy, Project Assessment Working Group with Kevin Daly of Daly Stone, Tureencahill pictured with his custom made stone cutting machine which was funded under the LEADER Programme.



Woman in Enterprise: Kate O'Keeffe of Art on Slate working in her new Art Studio in Ballydesmond which received €70,000 in LEADER funding.

Enterprise



Launching the "Hands of Duhallow" Craft Working Group is Michael Manning of Cork Kerry Tourism with IRD Duhallow staff members Catherine Crowley and Eileen Linehan and John Moynihan, Chair of the Enterprise Network.

Bookkeeping Service

Nicola McMahon is a perfect example of a rural success story. Nicola received support from IRD Duhallow's Local Development Social Inclusion Programme. She now has a thriving business in Millstreet which she recently expanded. She employs one part-time and one full-time staff member and aims to employ a further two employees within the next two years. Nicola is an experienced mentor on IRD Duhallow's Mentor Programme and according to Nicola "mentors can prioritise issues for businesses and identify the core issues requiring attention."

CRAFT ENTERPRISE SECTOR

An Griloch Stained Glass

One of the most recent crafts projects supported under the Local Development Social Inclusion Programme is Jenny de Haan's Stained Glass business. Her passion and skills in the art of stained glass, which she learned in England, prompted her to set up her own business when she moved to Lismire in 2002. She completed a number of courses in the art of tracing glass patterns and glass cutting in Ireland and subsequently approached IRD Duhallow's Enterprise Officer to assist her in developing her business idea. Through the provision of financial assistance for start-up capital cost she established her craft business under the trade name, An Griloch Stained Glass. She has produced a number of stained crafted glass pieces including stained glass for windows and doors, mosaic mirrors and fused glass objects. She also designs distinctive stained glass commission pieces.



Robin Lynch, Entrepreneur Ballycullane Pottery displaying her craft products at the Hands of Duhallow Launch. Robin received funding from the LEADER Programme in 2003 and has since expanded her business as a result.

Hands of Duhallow

IRD Duhallow has been working hard to develop a strong Craft group in the area. "Hands of Duhallow" represents a very promising initiative which was set up to represent local artists and craft makers. It aims to stimulate a renewed interest in local hand-produced Arts and Crafts and many of the new craft businesses have been supported under IRD Duhallow's Local Development Social Inclusion programme.



Michael Wall, Banteer and Bertie Buckley, Millstreet exhibiting their paintings at the launch of "Hands of Duhallow" Craft Fair.

"Hands of Duhallow" provides a voice for all craft and art workers in the Duhallow region and facilitates them with the opportunity to network and exploit market opportunities. This is something that IRD Duhallow has worked towards for some time and from an economic viewpoint a successful crafts base creates a viable source of income for many women in the Duhallow area. It also develops synergies that facilitate collective marketing and branding.



Ben O'Connor, admiring the work of Irene Ryan, craft worker.

Jill Vahy, centre, displays her hand crafted handbags at the Hands of Duhallow Craft Fair.

Links were established with the Crafts Council of Ireland to strengthen and create more flexibility for the network of artists and craft enterprises. With an ambitious strategic plan the group are optimistic going forward. Members have been supported to exhibit at The National Ploughing Championships, where they have had exposure to a wider national market.

LDSIP funded entrepreneur Pamela Barrett, showing her decoupage work to delegates from the new LEADER group in the Olomuch region of the Czech Republic on their visit to projects in Duhallow.



The Launch of "Hands of Duhallow" in November was a celebration of the creativity and talent which exists in the area. The event showcased the richness and diversity of local craftworkers and artists that thrive in the Duhallow region. It exhibited a tremendous selection of crafted gift items ranging from knitwear to woodcrafts, pottery to decoupage, and sculpture to art. They subsequently organised a Christmas Craft Fair at the Glen Theatre, Banteer, which was a huge success.

Equality, Disability and Migrants

Issues of Equality and Social Inclusion are of paramount importance to IRD Duhallow. As an organisation involved in Community Development and in working towards a more equal and inclusive society, IRD Duhallow has a strong commitment to adopting and promoting equality of opportunity for all.

Michael Doyle, Chairperson of our Equality Working Group recognises that “the communities in which we work are increasingly becoming multicultural and will continue to do so in the future. This challenges all of us to do things differently if we are to create positive outcomes for all members of our community.”



Jacqueline Healy, Migrant Rights, Michelle Melia, Comhairle and Sgt Eamonn Foley, Crime Prevention Officer with Diane Devitt, Equality Officer and Michael Doyle, Chair of Equality Working Group.

Integrating Duhallow; Community Approach

There is an increasing population of Foreign Nationals in the Duhallow area mainly from Poland, Lithuania, Latvia and Estonia. The number of Asylum Seekers is however declining but overall in Duhallow there is estimated to be six hundred foreign nationals, working in all sectors but predominantly in the construction industry, services including local shops, and in manufacturing industries.

Perhaps because of our long history of out migration rural communities are more welcoming and a positive integratory approach towards the incoming migrant community is evidenced.



Foreign National Workers getting on the bus in Kanturk which takes them to English Language Classes in Boherbue Training Centre.

IRD Duhallow is mindful however that while there is a buoyant building industry there is more than enough work for everybody, however should that change the situation could become very different. It is therefore important for the working group to promote integration at all levels of community life. It is important that these foreign nationals are supported to be full members of the community sharing their culture and ours together and not seen as mere “workers” here for our benefit.

Insp. Tony Sugrue and Sgt. Tom Nash discussing rights and entitlements with Foreign Nationals at the Migrant Information night held in May.



A series of consultative meetings with local communities as well as migrants has taken place. It would be a mistake to see the foreign nationals as a “community” simply because they share the distinction of being migrant workers in this a foreign country to them. Indeed we have found that many who even share the same nationality do not have the same sense of community that we Irish might take for granted. There need exists therefore for animation and capacity building work.



The Migrant Worker Information Evening generated huge interest.

The National Action Plan against Racism was published in January 2005. The overall aim of the plan is to provide strategic direction to combat racism and to develop a more inclusive intercultural society in Ireland based on policies that promote interaction, equality of opportunity, understanding and respect. IRD Duhallow has been supported to initiate pilot actions to further the aims of the strategy locally.

The aim of this project is to encourage and facilitate the development of new emerging communities and to support them to become fully involved with local communities in local clubs, activities and sporting events, recreation and the arts, which encourage participation and involvement of all.

The language barrier cannot be ignored and for many it was the main barrier to participation which they themselves identified. English Language Classes for the Foreign National Community have been organised supported with the DART Rural transport service. Advertisements for the classes were translated into the native languages and uptake was such that the classes run four nights a week.



Iryna Dame & Garda John Fuller at the Migrant Workers Information Evening.



Stephen Kelly, HSE at their stand at the Migrant Workers Information Night.

AWARE

AWARE is a voluntary support group that brings people with depression into contact with one another. The Duhallow AWARE support group meets on a weekly basis in The IRD Duhallow Training Centre. Due to the growth demand for the service IRD Duhallow is currently working with the facilitators to form a second group in the Duhallow.

Equality, Disability and Migrants

Kanturk Access Group

Much work has been done in the area of access particularly in the Kanturk region through the consistent efforts of Kanturk Access Group. Together with IRD Duhallow the Kanturk Access Group got tremendous support from the local County Council Office resulting in greatly improved mobility access in Kanturk town.



Members of the Kanturk Access Group at one of the new disability crossings on O'Brien Street in Kanturk.

Disability

The Equality Working Group together with the Kanturk Access Group organised a Disability Information Evening in November of last year. Representatives from a broad range of disability groups gave presentations on the night; The National Learning Network, Cork Society for the Deaf, The Irish Wheelchair Association, The Blind Association of Ireland and GROW. The purpose of the event was to give information to communities on the various disability support groups that exist and how they can help to support those with a disability be it physical, sensory or mental. The event was very well attended which further highlighted the need to keep people informed of the support available to them.

The Duhallow Bereavement Support Group

The Duhallow Bereavement Support Group was established by IRD Duhallow as a voluntary support group for those suffering from bereavement or loss and in particular those affected by suicide. The Bereavement support Group members have been trained in bereavement support and suicidology. Weekly meetings are held in the Training Centre in Boherbue which are open to any body who wishes to drop in to either share their own sense of loss or just listen.

There is also a helpline number operated by our trained volunteers and they can also arrange personal one to one meetings. The service got generous support from the Ireland Funds which has prioritised Suicide as an issue for communities. A series of community meetings are being organised throughout Duhallow to raise awareness and to lift the taboo that often surrounds the topic. IRD Duhallow believes that suicide has to be named and addressed specifically if we are to make the kind of progress in adequately providing the responses which are required.

A full audience turned out to hear the expert speakers at our first Seminar earlier this year. What we have learned from our work so far is that Suicide knows no social or economic bounds nor is it ageist or sexist therefore a multi-disciplined and multi-faceted approach holds the best prospect of success in tackling the problem which has scarcely left any family untouched.

Multi-Cultural Community Day

IRD Duhallow organised its second Multicultural Family Day in Millstreet last December which proved once again to be a fantastic mechanism for bringing together all strands of the community. On the Day the world was truly represented in Millstreet with people from Nigeria, Congo, Cameroon, Somalia, Russia, Ghana, and Sierra Leone. Eastern Europe was also well represented with children from Poland and Lithuania present together with over fifty local children.

The Multi-Cultural Family Day is a fantastic way to bring together all strands of the community and in particular to bring children of all cultures together at a young age. This helps to promote equality and diversity at an early stage and eliminates the risk of prejudice in the future.



Irish and Foreign Nationals attend the Intercultural family day with their children. The event was organised by the Equality Working Group in order to enhance links between the growing diverse communities in Duhallow. Included are Sharon Doyle Brookes and little Molly Brookes from Brisbane, Australia.



Participants at the Intercultural Family day held in Millstreet last December

Community Development

Supporting Vounteering

Over the last 12 months community organisations within Duhallow have developed to play a key role in the future progress of the region through the projects that they have undertaken, the training they have undergone and the positive direction these groups are taking. Through its Community Development Working Group, IRD Duhallow endeavours to support the community and voluntary sector in the Region while also promoting its development to ensure that groups are inclusive and proactive in their approach. This working group combines an extensive range of community interests which characterise both geographical concerns as well as issue based ones. The working group continues to animate and establish new groups to tackle specific issues while collaborating with established groups to undertake and accomplish a wide variety of projects which promote social inclusion and the further development of their communities.



Members of Aubane community celebrate the 30th anniversary of the founding of Aubane Social Club.

Community Development Training

This year the Community Development Working Group decided to build on previous training by organising two separate training courses this year. A foundation programme on community development was implemented with representatives from groups and organisations who previously had not undertaken training. This programme focused basic meeting and organisation skills and on developing participant's key skills in the area of community development interaction to help groups to develop in an inclusive and comprehensive way. An advanced programme was organised for the participants that had successfully completed the basis programme the previous year. Its focus was on developing leadership skills, addressing conflict resolution, and group development. Ongoing training is essential in supporting our local volunteers who give so generously to the many aspects of community development in Duhallow.



Community representatives attending the advanced community development training course.

SAOÍ Network

Saoi is the Irish word which implies experience and wisdom only gained with age. It is therefore appropriate that the older people of Duhallow would organise themselves under that apt banner. Now in its 3rd year, the SAOÍ Network, which was established by IRD Duhallow to promote and value the role and contribution of older people in Duhallow through co-ordinating the efforts of locally established groups to develop regional responses to their varying needs. Individual groups focused on the wide range needs of the elderly, are supported to develop and reach out to those most in need of the variety of services that they provide.



Part of the audience attending the SAOI Senior Citizens Conference.

This Network affords these groups the opportunity to voice their concerns for the senior citizens of Duhallow. The Network is represented on the Board of IRD Duhallow and actively participates on its Working Groups. In 2005 the Network chose to build on the success of its initial conference by holding its second conference entitled "Respecting the Role of the Elderly in Duhallow". This conference promoted issues such as equality and healthy ageing, as well as addressing issues such as ageism, the dangers of elderly abuse and the risk of isolation and loneliness in rural areas in Duhallow.

The DART (rural transport initiative) ensured that all senior citizens interested in the conference could attend especially those from the more isolated areas. Vital information was provided on the day to promote the social inclusion of our elderly community. This conference featured an intergenerational theme with ab exchange of skills and learning between young and old through music and dance and technology was highlighted. The Network also promotes the participation of older people in local decision making as well as encouraging and supporting them to avail of the various supports available to them such as the Go For Life Programme and the free travel pass.



Speakers and staff members at the "Respecting the Role of the Elderly in Duhallow" Conference. Back row, L to R: Helen O'Sullivan, Community Development Officer, Prof Des O'Neill, Adelaide & Meath General Hospital, Jack Roche, Chairman IRD Duhallow, Maighread Casey & Clare O'Keeffe, IRD Duhallow. Front: Brid O'Sullivan, HSE, Noel Dillon, IRD Duhallow, Gerard Scully, Age Action Ireland and Prof Eamon O'Shea, NUI Galway.

Eily Keating leads the way for her grandchildren Eileen and Joseph at the Duhallow Intergenerational Workshop.



Community Development

Tidy Towns Work Shops & Environmental Reports

The Community Development Working Group promotes and supports projects, which foster investment in the realisation and maintenance of a living countryside. This important strategy promotes the development of attractive towns/villages which adds value to the natural landscape and features of Duhallow.



At the launch of the Tidy Towns Best Practice guide back row from left; Helen O'Sullivan, Community Development Officer, Maura Walsh, Manager, Frank Donaldson, Donaldson Heritage and Tourism and Mary Barry. Front row, Jack Roche, Chairman and Michael Manning, Cork Kerry Tourism.

Following consultation with our three Regional Fora, community representatives felt that Tidy Town workshops would be very beneficial to encourage communities to enhance the appearance of their villages and harness community spirit and promote volunteering in their own areas. A series of training workshops were held in Duhallow led by Frank Donaldson of Donaldson Tourism & Heritage Consultancy with LEADER support. Some workshops were aimed specifically at those villages which were had never entered for Tidy Towns to encourage their participation as well as workshops designed especially for those veterans of the competition who wished to improve their ranking.

Communities new to the competition received information on a variety of issues including its background, advice in forming an inclusive committee as well as the skills necessary for surveying their area. Towns and villages that entered the Tidy Towns Competition in the past focused more on the improving their application, drawing up a three year plan and improving their strategy to maximise their marks.

As a follow-up to this training IRD Duhallow engaged Frank Donaldson to draw up environmental reports with the committees in twenty Duhallow towns & villages. These illustrated reports addressed topics such as the overall developmental approach, the built environment, landscaping, and general tidiness. The reports clearly highlight improvements that should be undertaken by local tidy towns committees in the future. Alongside these reports Best Practice Guides were also produced to aid communities in planning their approach to the competition in the future. The reports were launched by Michael Manning of Cork Kerry Tourism at a workshop for communities which had a capacity attendance.

Financing Community Enterprise

IRD Duhallow invited Clann Credo, the Social Investment Fund established by the Presentation Sisters and which is supported the Mercy order as well. Clann Credo addressed Duhallow communities on the opportunities that are available to them for raising matching funds for projects through low interest loans which Clann Credo provides. Many of our communities are undertaking very sizable projects which, although funded through LEADER and other programmes, require bank rolling by the communities as well as matching funds. Clann Credo can play a supporting role with the communities.



Huge interest from the public at the Community Response to Suicide Information Night.

IRD Duhallow Chairman, Jack Roche officially opening the LEADER funded Laharn Community Cultural & Heritage Centre. Included are Michael Moynihan, TD, Ted Crowley, Centre Chairman and Cllr. Michael Creed.



Estate Management

The Community Development Working Group continues to support residents in local authority housing estates to establish residents associations in the estates which are still without them. The absence of residents associations often results in the estates becoming dilapidated and resident's needs going unarticulated. IRD Duhallow continues to work alongside June White and Ger Cotter of Cork County Council in identifying estates where development is needed. IRD Duhallow is represented on the North Cork Estate Management Implementation Team of Cork County Council. The Church Road Estate in Ballydesmond is the most recent to have major works completed by the newly formed residents association with support of Cork County Council and IRD Duhallow's Rural Social Scheme. Work has commenced in O'Callaghan Park in Kanturk, Rathcoole Estate, and Newmarket Estate.

Cluid Housing

Millbrook Estate in Kanturk is an example of high quality affordable housing in the Duhallow Region which the Community Development Working Group supports each year through providing workshops on issues relevant to the new residents in this estate. This year IRD Duhallow organised workshops on Managing your Money & Budgeting where representatives from MABS & Kanturk Credit Union provided inputs. Colette Vaughan has played a key role in supporting Helen O'Sullivan in organising and encouraging this new community.



Speakers at the Community Response to Suicide Information Evening, L to R: Philip O'Connor, Community Mental Health Nurse, HSE, Maura Walsh, Manager, IRD Duhallow, Neil O'Sullivan, Living Links, Kerry, Marie Shannon, Nurse Behaviour Therapist, HSE.

ASIST Training

IRD Duhallow in conjunction with the Health Service Executive facilitated an Applied Suicide Intervention Skills Training Course (ASIST) in May. ASIST was an intensive, interactive and practice-dominated course designed to help participants recognize risk and learn how to intervene to prevent the immediate risk of suicide. It was open to all those involved in the community and was designed to help all staff and volunteers become more ready, willing and able to help persons at risk. Just as "CPR" skills make physical first aid possible, training in suicide intervention develops the skills used in suicide first aid. This course was over subscribed therefore a second course will be run in the Autumn. ASIST has been identified as a suicide intervention programme for today that can help save lives for tomorrow in Duhallow.



Board & Staff Members of IRD Duhallow who undertook ASIST Suicide Intervention Training with tutors Fionnula Sheehan & Marie Ellis, HSE Southern Region. Helen O'Sullivan, Community Development Officer, John Brosnan, Carmel Mullane and Ita Hickey, RSS Supervisors, Richard O'Brien, Transition to Employment Officer and Billy Murphy, Community Development Forum.

Transition to Employment Options Programme



Participants on the Transition to Employment Options Programme with tutor Noel Newman.

This is an exciting new initiative being undertaken by IRD Duhallo, in partnership with our neighbouring Local Development Groups Ballyhoura and Avondhu, in response to a serious need within the local community.

The aim of the "Transition to Employment Options Programme" is to develop a model of enhanced delivery of education, training and employment services to people with mental ill health in rural areas which has the potential to be replicated and mainstreamed". It is a new programme from the Department of Justice Equality and Law Reform administered by Pobal.

The objective of the programme is to facilitate and empower people who suffer or may have suffered with mental ill-health, emotional distress, depression and feel isolated, lack the confidence or ability to seek employment, training, self employment or any other options that may be available to them. Participants will get one to one support and advice from the Employment Facilitator.

This is a very important part of the programme, as it will give the participants the opportunity to discuss their options in a confidential setting. What concerns they may have, what they like and don't like within the programme. This will enable the Employment Facilitator to guide and advise them on what options may be best suited to that person. The one to one facilitation will continue after the programme has concluded in order to support the person in their new role whether that be a job placement, training programme, a Scheme, Sheltered employment or self employment. It will remain for as long as the individual requires and needs it.

The programme includes modules on Personal Development skills, Work skills sampling, CV preparation, Interview skills, applying for jobs, filling out Job Applications, out reaching other training programmes. The skills gained through this programme will enable people to take steps to get back into the workforce.



The crafts module of the Transition to employment Options Programme is designed to open up new options.

The Crafts section, particularly the Upholstery brings the group together and develops good teamwork skills. It has helped the participants in developing their interpersonal skills, as it requires a lot of interaction between the people working together on a project. This section has received a very positive reaction from the participants. From this we will introduce participants to Computers, CV preparation and applying for jobs while at the same time giving them the support and guidance they require to progress. The programme is structured around the individuals and their requirements.

The purpose of this programme will also be to raise awareness amongst people, employers in particular of mental ill health, which has been a very mis-understood illness over the years. The main barrier to people with mental ill health getting back into the workplace is the public perception of what is mental ill health.

The concept of Mental Health is not generally understood or discussed to any great extent by individuals, families, the media or society. In 2004 a report into mental ill health found that 80% of GP's reported that 10% of their patients had mental or psychological problems with anxiety disorder, depression and emotional difficulties being the top three presenting conditions.



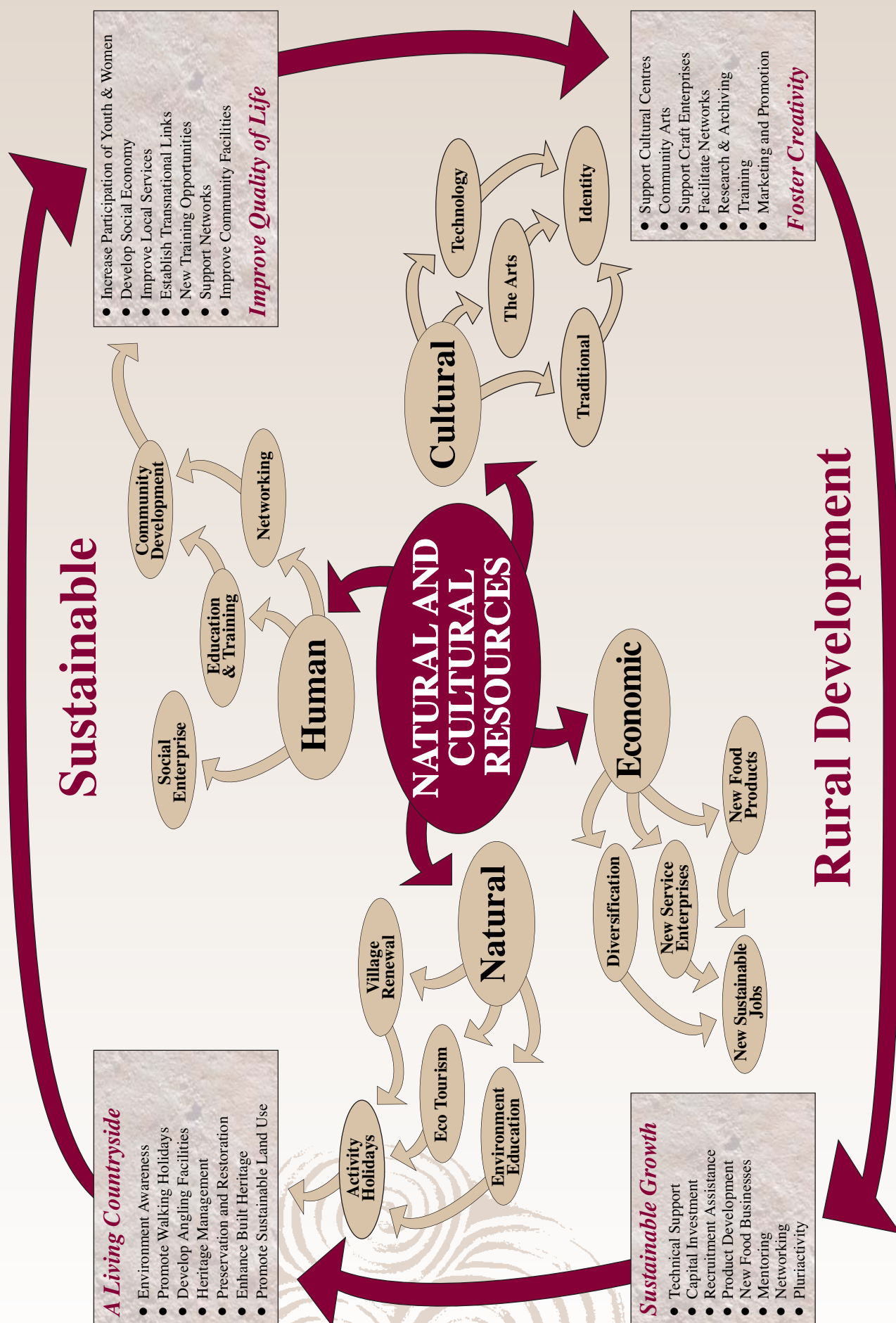
Engrossed in their work, some of TEP participants making footstools and childrens seats.

Mental Health is a state of well being in which the individual realises his/her own abilities, can cope with normal stresses of life, can work productively and fruitfully, is able to make a contribution to his/her community. Mental illness therefore is where a person is not able to do these things and normal functioning is seriously impaired. The categories of Mental ill health would include the following; Neuroses which are phobias, anxiety etc; Addictions such as alcohol, drugs and gambling; Psychoses such as depression Eating Disorders such as anorexia or Bulimia Nervosa and Schizophrenia. Most of these conditions are treatable with medication, counselling, support groups and education.

The "Transition to Employment Options Programme" has been established locally with the support of the Dept of Social & Family Affairs, The Health Services Executive southern Region and the VEC. Career Tracks has been selected as the training provider based on their excellent track record in delivering to other target groups in Duhallo. Fifteen people have commenced the programme this year and it is proving a great success with the participants. Two further programmes are scheduled to begin Oct 2006 and May 2007.

LEADER Sustainable Development Model

IRD Duhallo LEADER+ Natural and Cultural Resources



LEADER+, Mainstream Rural Development Programme

Funds Committed to Projects to June '05

Sector	Project Name	Description	Committed
Action 1 Training	Business Basics Training	Business course targeting women and youth	€1,952
	Rathmore Community Childcare	Creche Management Course	€580
	Community Development Leadership Programme	Training for chairs and members of working groups	€8,567
	Caring Skills Course	Course in caring skills	€726
	Ballyhass Lakes	Tourism Customer Care	€3,300
	Duhallow IT Training	Community IT Training in locations throughout Duhallow	€44,646
	Interior Design Course I & II	6 week interior design course for women	€1,621
	Alliance Francaise	Fund one participant to support the development of trans-national projects	€500
	Diploma In Personnel Management	Fund 1 participant on this course to support Community Enterprises	€4,800
	Diploma in Rural Development	Fund 2 participants on this course	€11,214
	Choral Society Training	Voice training for Duhallow Community Choral Society	€7,730
	European Experience Programme	Fund one participant on this programme	€1,270
	Meelin Parenting Skills Course	Parenting skills for community playgroup members	€737
	Rockchapel Cultural Training camp '03 & '05	Training Camp on traditional Irish music, dance and song for youths	€2,400
	Back to employment for women	For women wishing to start own business	€22,324
	Community Leaders Training	Training for community leaders on leadership and group work	€840
	Parental Involvement in Education	Training to support the setting up of a regional Parents Association	€500
	Careers Exhibition	Careers Exhibition Programme for local schools	€2,188
	Duhallow Enterprise Training	6 training modules for micro and small business community of Duhallow	€2,500
	Castlemagner Musical Society	Choreography training for members- targeting women and youths	€6,000
	Community Childcare Training	Training on good practice for community facilities	€1,232
	Tidy Towns Workshops	Training on tidy towns for communities	€3,146
	Harp Training	Training for 4 local harpists targeting youths of the region	€750
	Beginning Experience Programme	Training in personal development for members of the lone parents network	€150
	Corporate Governance	Training for community and voluntary representatives on corporate governance	€7,700
	E-Feirme Course	Training on software package for low income smallholders	€725
	Micro & Community Enterprise Training	Training in book-keeping	€1,200
	Permaculture Training	Training in sustainable agriculture and living	€413
	Kanturk Youth Choir	Training for youth choir	€2,400
	Cullen Pipe Band	Training for the pipe band	€5,400
	Advanced Community Development Training	Advanced training for community representatives	€2,934
	Training for Smallholders	Health and Safety Training for Smallholders	€1,883
	Living Scenes	Intergenerational Training Project in Millstreet	€10,000
	Sort My Books Out	Bookkeeping Training for SME's	€1,500
	Duhallow Farmers Market	Training in presentation and marketing for stallholders	€514
	Supervisory Management Training	Training in supervision skills	€3,500
	Safe Pass Course	Training course on safety	€675
Analysis & Development	Renewable Energy Feasibility	Feasibility into setting up renewable energy processing plant	€12,500
	Kiskeam Business Park	Technical examination of site to determine suitability for business park	€3,025
	Laharn Rambling House	Preparation of building plans, and planning for the building	€2,761
	Duhallow Way/Blackwater Way	Research flora, fauna & heritage of Duhallow Way Walk	€6,960
	Newmarket Co-op	Study of suppliers to Newmarket Co-op	€3,409
	Character Assessment	Character assessment of various landscapes of North & South Eastern & Western Duhallow	€24,000
	Community Resource Library	Set up library for community groups in Duhallow to freely access information	€7,500
	Kilbrin Community Council	Feasibility study to develop plan for community hall	€5,000
	Lyre Community Hall	Feasibility study in order to develop plan for the development of community centre	€4,840
	Tidy Towns Illustrated Plans	Develop 20 illustrated plans for villages in Duhallow	€12,500
	Tidy Towns Best Practice Guide	Development of a best practice guide on tidy towns for communities	€1,258
	Bruach na Carraige	Feasibility into setting up of a hostel in Rockchapel	€12,500
	CLAR Spatial Plan	Feasibility study of 4 CLAR communities- Ballydesmond, Boherbue, Rockchapel & Kiskeam	€194
Innovative Rural Enterprise	Kloc Kraft's	Marketing grant for craft enterprise & capital grant for workshop	€70,000
	Avonmore Electrical Ltd.	Purchase of machine for testing motors to aid in diversification	€65,000
	Fitzgerald Bodybuilders Ltd	Diversification of existing business through purchase of new equipment	€40,000
	Clover Food Ingredients Ltd	Set up of food ingredient company	€16,511
	Daly Stone	Setting up of craft stone enterprise	€16,865
	Duhallow Community Food Services Ltd	Expansion of food business	€7,453
	DGP Plastics Ltd.	Purchase moulds to manufacture new plastic specialised components	€40,000
	Ballycullane Pottery	Setting up of pottery business (Woman in Enterprise)	€3,990
	Dilis Handcrafts	Expansion of young craft entrepreneur	€18,658
	Autoroller Ireland	Construction of new premises to facilitate manufacturing on site	€65,000
	Glen Foods	Purchase of cheese packaging machine and weigh price system	€57,230
	Ingredient Solutions Ltd	Purchase equipment for business expansion	€79,671
	Allenweld Ltd	Upgrade of dispatch area	€6,000
	J Roche Construction	Purchase of moulds for expansion of concrete design business	€3,913
	D&E Welding Services Ltd	Business Expansion & Relocation	€50,000
	Denis Lehan Stone	Purchase of stone cutting machine	€9,196
Agricultural Products	Maspeth Foods Ltd	Business Expansion & Relocation	€25,000
	Health & Safety Services Ltd	Business Expansion & Relocation	€20,000
	Donal Casey & Sons	Expansion of existing business to manufacture of concrete bio septic tanks	€21,030
Enhancement Natural/ Built/Social/ Cultural Env	Allow River	Development of river for tourism angling	€21,381
	Dallow River	Development of river for tourism angling	€25,136
	Curraigue River	Development of river for tourism angling	€19,022
Enhancement Natural/ Built/Social/ Cultural Env	Cullen Community Sports Gym	Upgrade existing sports hall to community gym	€10,000
	A View from Mount Hilary	Publication of book focusing on local history over 120 years in Banteer & Lyre	€11,050
	Millstreet Mural	Mural on wall of girls national school in Millstreet (Youth Project)	€2,343
	CLAR Village Enhancement '02,'03,'04, '05, '06	CLAR Village Enhancement - LEADER contribution	€75,000
	Village Enhancement	Village Enhancement in nine Duhallow Communities	€93,176
	Duhallow Dream, Choral Society	Purchase of keyboard for choral society	€750
	Aubane Historical Society	Publication of works of Eoghan Rua O Suilleabhán	€1,828
	Banteer Community Sportsfield	Construction of children's play amenity area	€42,836
	Banteer Community Sportsfield	Development of a 1km walk around Banteer Community Sportsfield	€38,295
	Traditional Songs & Stories	Publication of book of local songs, stories and poems	€1,011
	Folklore that went up the Chimney	Publication of book of folklore, rituals and history of their origins	€1,023

IRD Duhallow 0506 Annual Report

Sector	Project Name	Description	Committed
	Nadd Development Association	Erection of bronze eagle to mark the origins of the name Nadd	€461
	Donoughmore Community Centre	Refurbishment of local community centre	€8,189
	Knockbrack Monument	Monument to commemorate the Battle of Knockbrack	€2,300
	Millstreet Community Pitch & Putt	Purchase of equipment for maintenance of greens	€793
	Bweeng Hall	Renovations to community hall	€2,709
	Ned Buckleys' Poems	Publication of book of unpublished poems by the poet Ned Buckley	€2,550
	Coisceim na gCallaí	To erect sculpture of hag, depicting origins of the name of the village	€3,758
	Banteer Public Address System	Installation of public address system at the community sportsfield	€1,465
	Banteer Community Centre	Installation of disabled toilets and heating system in the community hall	€21,665
	Mná Dhuthalla	2004 calendar featuring 12 notable Duhallow women	€4,025
	Kilcorney Forest	Purchase of picnic table to attract tourists and locals to the woodland	€165
	Duhallow Life & Lore	Publication of oral, folklore and heritage material on Duhallow	€8,630
	Meelin Community Hall	Refurbishment of Meelin Community Hall	€12,108
	Eamon Kelly Memorial	Bronze sculpture of seanchai Eamon Kelly	€20,115
	Edel Quinn Hall	To re-furbish and equip kitchen of the hall	€2,642
	Maurice O'Keefe Festival	To establish weekend of traditional Irish music in Kiskeam	€1,542
	Newmarket Tidy Towns	Erection of sculpture of Sarah Curran and planting and painting in the town	€22,692
	Millstreet Pipe Band	Equipment for the band	€1,282
	Donoughmore Writers Group	Publication of the writings of locals from Donoughmore	€1,817
	The Glen Theatre	Extension to the community theatre including disabled access and disabled toilets	€60,732
	Castlemagner Community Hall	Upgrading of toilets in the centre	€6,150
	The Forge, Glashabee	Preservation of old forge	€14,550
	Millstreet Town Park	Expansion of children's playground in the community park	€22,661
	Lismire Youth Club	Equipment for the club in order to aid in the set up	€1,469
	Cork Placenames	Publication of history of placenames in Duhallow	€18,315
	Hannah Sheehy Skeffington Memorial	Sculpture of Hannah Sheehy Skeffington in Kanturk Town Park	€19,500
	Sliabh Luachra Fiddle Masters	Publication of works of local musicians	€1,975
	Where Araglen So Gently Flows	Publication of book	€4,750
	Kilbrin Grotto	Improvements on appearance of the community grotto	€2,574
	Dromtariffe Parish Hall	Lighting in the community hall	€9,360
	Kilcorney Community Sports Gym	Setting up of community gym	€17,672
	Aubane Community Centre	Heating system for the community hall	€5,772
	Temperance Hall, Kanturk	Refurbishment to union hall	€15,000
	Pearse Memorial Hall, Boherbue	New roof for community hall	€20,472
	Local Television Network	Equipment to expand community television service	€5,750
	Laharn Community Action Group	Refurbishment of old school as a cultural centre	€50,280
	Freemount Community centre	Installation of new windows in the hall	€3,689
	Freemount Comhaltas Branch	Refurbishment cultural centre	€3,000
	Kanturk Youth Choir	Uniforms for the choir	€664
	Planning Symposium	Conference on planning in rural areas	€2,728
	A Tragic Troubadour	Publication on the life of Edward Walsh	€11,195
	Kanturk Gymnastics Club	Equipment for the club	€4,300
	Gneeveguilla Community Council	Emergency lighting at community centre	€8,000
	The Dowry Book	Publication of book recounting life & times of a Duhallow Woman	€2,425
Environmentally Friendly Initiatives	Energy Awareness Analysis Survey	Survey on energy consumption in Duhallow homes	€7,500
	Duhallow Way Information Initiative	Information Seminar to raise awareness of the environment	€540
	Knocknaseed Environmental Project	Development of nature reserve in Rathmore	€35,000
	Recycling & Composting	Promotion of composting in communities	€2500
Action 2 Inter-Territorial	"Re-cycling - The New Economy"	Conference on community based re-cycling	€1500
	Duhallow Way portion of Munster Way	Erection of signs and map boards at 5 points on the Duhallow Way Walk	€6,295
	Good Food Guide	Publication of guide of food producers in Cork	€274
	Strategic Planning	Training workshop on strategic planning	€3,540
	NRDP Evaluation	National Evaluation of NRDP Programme	€3,000
	Cork International Folk dance Festival	International Cultural Event	€5,000
	IFEX	To fund a small food business attend the IFEX Exhibition in the RDS	€650
	North Cork Socio Economic Profile	To commission a socio/demographic typology profile of North Cork	€8,000
	Education & Training provisions in Cork	Audit of adult education provisions in Cork	€4,000
	Rural Disadvantage Research	Develop new indicators of rural disadvantage	€1,500
	Green Mapping of Cork	Develop green map of Cork	€2,000
	LEADER Food Village	Funding for small food producers to attend food village at National Ploughing Championships	€1,000
	Corporate Social Responsibility	Training workshops on corporate social responsibility	€1,200
	LEADER Craft Village '03 & '04	Attendance of four craft enterprises at National Ploughing Championships	€2,300
Trans-national co-operation with Member States	Schola	Networking of rural schools: Ireland and Spain	€54,000
	Banteer Youth Club	Training exchange to Caerphilly in Wales	€19,266
	Imaging Rural Identities	Expression of identity for rural groups through photo and video image production	€70,000
	Residential Training Programme	Training Programme for New Accession Countries	€10,000
Trans-national co-operation outside E.U.	"Paths to Rural Regeneration"	Develop template for Village Renewal and Rural Regeneration in Czech Republic	€10,000
Action 5 Rural Tourism	Kiskeam Amenity & Wildlife Sanctuary	Development of site for wildlife and community walk	€5,530
	Peter Twomey Rivers Project	Preservation of fishing resource	€2,940
	Boherbue Community Park	Provision of park benches in Boherbue Community Park	€1,792
	Amenity Signs	Funding for amenity signage in Duhallow Villages	€40,000
	Millstreet Country Park	Production of Marketing Literature	€2,747
	Knockagallane Self Catering	Development of self catering accommodation	€10,000
	Bailte Ferainnn I gCeantar CLÁR	Funding for communities to collect and erect townland stone markers	€1,000
	Glouneen Araglen Loop Walk	Development of walk in Kiskeam	€40,000
	Millstreet Country Park	Development of three historical walks in the park	€65,000
	Clonbanin Self catering	Development of self catering accommodation	€10,000
	Blackwater Way Walking Route	Upgrading of Duhallow portion of Blackwater Way Walking Route	€24,500
	Bernard Moyrihan	Development of self catering accommodation	€10,000
	The Wallis Arms	Development of Bed and Breakfast Accommodation	€48,000
	Marketing of Rural Tourism	Rural Tourism Programme in conjunction with Cork/Kerry Tourism	€1,500
Agri-Tourism	Glenrath Walking Holidays	Expansion of existing self catering accommodation and development of on farm walks	€49,525
	Michael O' Donoghue	Development of on farm self catering accommodation	€20,000
	Maura & Mossie Archdeacon	Development of on farm self catering accommodation	€20,000
	David and Sheila Cotter	Development of tourism equestrian arena	€36,962
	Coolroemore Self Catering	Renovation of old house for self catering accommodation	€20,000
	Total		€2,304,345

Local Development Social Inclusion Programme

Funds Committed to Projects to December 2005

Sector	Project Name	Description	Committed
Services to the unemployed	Duhallow Farmers Market	Promotion and maintenance of the market	€6,729
	Beekeepers Association	Funding for marketing of Duhallow Honey	€3,315
	Financial Advice and Assistance	Advice and Guidance for Low Income Smallholder Families	€1,234
	Focal Farmer Information Seminars	Seminars for low income smallholders on topical issues including animal health, REPS etc	€2,136
	Focal Farmer Programme	Supports including milk recording, silage sampling, AI and soil analysis	€11,340
	Training for on farm diversification	Vegetable production course	€410
	Beekeepers Association	Training on bees wax products	€613
	Job Centre	Ongoing support to long term unemployed including CV preparation, interview technique etc	€484
	Amy Finnegan	Bursary for continuing education	€500
	Paula Drumm	Bursary for continuing education	€450
	Sheila O Keffe	Bursary for continuing education	€570
	Geraldine O Connor	Bursary for continuing education	€700
	Noreen Barry	Bursary for continuing education	€570
	Jeremiah Heffernan	Bursary for continuing education	€400
	Kathleen Dennehy	Bursary for continuing education	€2,000
	Iryna Dame	Bursary for continuing education	€570
	Computer Training	Introduction to computers training course	€8,780
	Return to Education	Return to education training	€1,332
	Duhallow Community Food Services Ltd	Equipment Grant for social economy enterprise	€5,500
	Pamela Barrett	Equipment Grant for craft enterprise	€5,309
	An Griloch	Stain Glass Craft business	€1,000
	Connys Tack Shop	Set up of online tack shop	€2,371
	Nicola McMahon	Bookkeeping Services	€1,161
	Craft Working Group	Launch of Craft Working Group and Craft fair	€3,581
	Mentoring Service	Mentoring Service to local start up entrepreneurs	€974
Community Development	Domestic Violence	Information Initiative on domestic violence	€1,500
	Lone Parents Group	Life coaching training	€1,000
	Rathmore Social Action Group	Equipment grant	€390
	Millstreet Community Council	Funding for equipment	€1,105
	Ballydesmond Community Council	Funding for chairs for community centre	€2,360
	Castlemagner Community Council	Funding for chairs for community centre	€2,045
	Glen Theatre	Funding for chairs for community centre	€1,580
	SAOI Network	Conference highlighting the role of the elderly in the community	€3,535
	Millstreet Gramophone Circle	Funding for equipment	€292
	Duhallow Women's Forum	Women in Business Conference	€3,075
		Speech and Language Therapy Information Initiative	€571
		MS information Evening	€410
		Health Information Evening	€605
		Role of Women in Community Development Information Evening	€736
		Conference entitled "Is rurality a factor in determining women's health"	€2,683
	Volunteerism	Initiative promoting volunteerism in Duhallow	€500
	Tidy Towns	Information seminar on the tidy towns initiative	€437
	Cluid Housing Estate	Information initiative on managing finances	€260
	Community composting	Composting demonstration for community groups	€3,036
	Community Development Training	Training for community representatives	€2,500
	Monthly Newsletter	IRD Duhallow monthly newsletter	€6,236
	Suicide & Young People	Information evening on the issue of suicide among young people	€300
	Ned Buckley Memorial committee	Funding to release CD	€500
	Kanturk Branch of Irish Red Cross	Sign Language Classes for Cadets	€1,035
	Mental Health Promotion	Funding for Duhallow branch of AWARE	€500
	Equality Working Group	Intercultural Family day	€3,018
	English Language Classes	Classes for Foreign Nationals	€1,038
	Disability Forum	Funding for facilitation of the forum	€720
	Equality Affirmation	Funding for plaques for promotion of equality	€1,500
Community Based Youth Initiative	After schools Homework Support	Homework Support in 4 secondary schools in Duhallow	€14,393
	Life Coaching	Life Coaching for early school leavers	€3,200
	Banteer Youth Club	Social Inclusion family day	€584
	Youth Information Initiatives	Information Seminar for young people on osteoporosis and autism	€1,022
	Positive Parenting	Information Initiative for parents	€354
	Rathmore Community School	Information Initiatives for young people	€886
	Scoil Mhuire	Funding for the development of a musical library	€3,780
	Dyslexia Support	Parent support course for parents of children with dyslexia and other learning difficulties	€1,275
	Colaiste Treasa	Literacy homework support	€1,471
	Literacy Camp	Summer camp for children with literacy problems	€1,693
	Dyslexia Workshops	Workshops for children with dyslexia and other learning difficulties	€970
	Community Notice boards	Notice board for youth clubs throughout Duhallow	€1,321
	Careers Exhibition	Careers exhibition for second level students	€1,255
	Duhallow Youth Forum	Development of the youth forum	€501
	Millstreet Youth Club	Peer Education Camping Trip	€1,207
	Kanturk youth Club	Funding for equipment for the youth club	€470
	Banteer youth Club	Funding for summer camp	€750
	Rathmore Community Childcare	Funding for summer camp	€750
	Anchor Playschool	Funding for summer camp	€750
	Tir na nÓg Summer Camp	Funding for summer camp	€657
	Total		€142,785

Local Development Social Inclusion Programme

Social exclusion is the 'cumulative marginalisation from production (unemployment), from consumption (poverty), from social networks (community, family and neighbours), from decision making and from an adequate quality of life'. National Development Plan 2000-2006

The Local Development Social Inclusion Programme (LDSIP) aims to counter disadvantage and to promote equality and social and economic inclusion.

The LDSIP is managed by Pobal on behalf of the Department of Community, Rural and Gaeltacht Affairs. It is funded by the National Development Plan 2000-2006 under the two Regional Operational Programmes. Pobal (formerly Area Development Management) is a not-for-profit company with charitable status that manages programmes on behalf of the Irish Government and the EU. Pobal's mission is to promote social inclusion, reconciliation and equality and to counter disadvantage through local social and economic development.

Working Together Working for Change

The Achievements of the Local Development Social Inclusion Programme 2000-2006



IRD Duhallow develops actions to counter exclusion on the basis of comprehensive, integrated, local development plan approved by Pobal.

Actions are grouped into three measures, which complement one another:

- 1 **Services for the unemployed**
- 2 **Community development**
- 3 **Community-based youth initiatives**



Maura Walsh, IRD Duhallow Manager making a presentation to Jeanette O'Connell upon her retirement as chairperson of Duhallow Women's Forum.

IRD Duhallow's Local Development Social Inclusion Programme Strategies focus on achieving a multi sectoral approach involving multi-agency support as well as the individuals and communities affected by these issues.



Minister for the Department of Community, Rural and Gaeltacht Affairs, Éamon Ó Cuív at the Duhallow farmers Market Stall at the National Ploughing with Michelle Mitchchink and Margaret Lehane.

Seven Action Programmes were identified in our strategic plan 2001-2006 and include Community Development, Youth Development and Preventative Education, Employment Services, Complimentary Education, Small-holder Supports, Enterprise Supports and the Development of Social Enterprises.

These Action Programmes together enhance the position of those affected by poverty and rurality, promote equality between men and women, able bodied and disabled; and improve the quality of the natural environment of Duhallow.



Judy O'Leary, Chair of the Women and Childcare Working Group with Michael Doyle, Chair of the Equality Working Group reviewing the LDSIP strategic plan targets.

Supporting Volunteerism

Although volunteerism is thought to be declining nationally as more and more families become dual income and therefore have less time to spend outside the home in the evenings, the Duhallow experience is quite different. Since the LDSIP commenced, IRD Duhallow has been unable to support an ever increasing number of development and support groups.

The company structure with active working groups has also facilitated more people than ever to become involved in developing their areas. In addition to the geographically based community groups a number of issue based groups are also operational concerning topics from depression and mental health, elder care, child care, lone parents, carers, disabilities, childcare, lone parents, carers, disabilities, youth, women, urban estates, migrant workers and asylum seekers as well as social enterprises.

Youth & Education

Strategic Focus

IRD Duhallow's Strategic Plan has identified three strategies for Youth & Education:-

- To address service provision to enhance participation in the rural context
- To alleviate educational disadvantage in co-operation with local schools
- To promote participation by young people in local development.



Attending the "Youth of the Countryside" Conference in the Czech Republic were, from left: Helen O'Sullivan, Community Dev. Officer, Eileen Linehan, Community and Enterprise Team Leader and Breda Dooley, LEADER Inspector, Dept of Community, Rural & Gaeltacht Affairs.

IRD Duhallow's Youth and Education Working Group draws on the expertise of its members who represent; primary and post primary schools; parents and staff; young people; community leaders; and statutory sector representatives including an Garda Síochána. The primary objective of our work is the prevention of under achievement and exclusion through interventions at the earliest possible stage in the life of the young person. An integrated approach to tackling youth and education disadvantage is pursued.

Dyslexia

IRD Duhallow continues to run workshops for primary school children with dyslexia. Parents have identified these workshops as the motivating factor in the development of their children's academic abilities. In order to make the service accessible to as many children as possible the workshops are held locally in our Training Centre in Boherbue with Duhallow Area Rural Transport providing a door to door transport service. Due to continuing demand, the literacy summer camp will be held in late August of this year.



Attending the conference in the Czech Republic where they gave a presentation on the work of their youth groups were from left David O'Connor, Cian O'Sullivan and Brendan Withers.



Youth & Education Officer Marion O'Sullivan with pupils of Knockclarig National School at the launch of the OUTLAB project in Bruach na Carraige.

play areas in a clean and hygienic manner. Duhallow Community Food Services provides meals for the children on a daily basis. Transport is organised through DART (Duhallow Area Rural Transport) so that children attending schools in rural areas have access to the service.

There is a tiered pricing system available so that people who are experiencing financial difficulties and families who have two or more children attending the facility can be facilitated. There are currently sixteen children availing of the service but this is set to grow dramatically over the summer months when the service will operate full days, as a summer camp.

Newmarket After-Schools

In September of 2005, IRD Duhallow opened Duhallow's first After-Schools service which is based outside of the school setting. Located in the James O'Keeffe Institute funding has been granted by the Dormant Accounts Fund to establish the service which is open to all primary school children. It currently operates Monday-Friday from 2-6 including in-service training days when the schools are closed. Children are supervised in completing their homework and support is offered to individuals and groups of students who may require it. Children also learn through play and moreover they develop their social skills which, reduces social exclusion.

The after-schools co-ordinators Tommy Clifford and Niamh O'Mahony are supported by two Rural Social Scheme participants who maintain the study rooms and

Kathy Clarke, Author of "The Breakable Vow" with students from Coláiste Treasa, Kanturk. Kathy visited schools in Duhallow as part of a Domestic Violence initiative to raise awareness of the issue among young people in Duhallow.



The Working Group is planning to develop the service to a full wrap-around Out of Schools Service operating 48 weeks per year including in-service training days and school holidays. This will be the first such service in Duhallow. Funding has been sourced from the Department of Justice Equality and Law Reform to develop this service.



Students from Knockclarig display their handheld PDA's, part of the OUTLAB Transnational project.

Homework Support Programme Secondary Schools

The Working Group is supporting the five secondary schools in Duhallow to operate an after-schools programme to address education disadvantage, develop study and social skills, with an emphasis on team-building and recreational activities. One of the main objectives of this programme is to tackle the increasing problem of early school leaving.

Millennium Partnership Fund

The Millennium Partnership Fund for access to third level education is administered by POBAL on behalf of the Department of Education and Science. The purpose of the fund is to assist students, whose families may be experiencing financial hardship, in remaining in third level education. For some students the bursary saves them from having to take on a part time job which can often deny them sufficient time to focus on their studies. For others the supported study assists them with repeats in the autumn and the mentoring and tuition from career guidance counsellors from the Cork Institute of Technology that they value most. IRD Duhallow is part of a county-wide consortium of local development groups which administers the fund within Cork.

Schola Transnational Project

The current Schola Project builds on a pilot undertaken by IRD Duhallow and two Spanish LAGs: CIDER Pirepino and INTEGRAL in 2001 and funded through the Local Development Programme. This pilot action confirmed the merits of promoting linkages between small rural schools, within LAG territories and transnationally.

Five schools in the region are taking part in the Schola Project including Cullen, Cloghoul, Kilcorney, Carraigán, and Cordal. The latter two being in West Cork LEADER and Tutha Chiarraí respectively, the project is therefore inter-territorial as well as trans-national.



Students from Kilmurry National School with their teachers Ina Horgan and Fiona Horan.

Youth & Education



Pupils from Kiskeam N.S. with Minister for Education & Science Mary Hanafin.

The schools participating are small two or three teacher schools in peripheral rural areas. In many cases their communities are defined by the presence of the school as the only public service in the area and therefore of vital importance. Teachers and students can easily become isolated in such circumstances furthermore resources to schools with fewer pupils are less than to larger schools so the Youth & Education Working Group looked at the situation in other LEADER areas. CIDER Prepirineo with whom IRD Duhallow had collaborated previously had established a project called SCHOLA for the purpose of building a European Rural Schools Network and Duhallow became a partner in the project.

The Schola Group of five schools along with the teachers, senior classes and parent's representatives of went to the Prepirineo region at Easter 2005. There they saw first hand the benefits of co-operation between local schools with the state sector playing a central role in supporting the schools student's needs. The community and Local Action Group play a vital role.



*Summer Students
Catherine O'Keeffe,
Linda O'Keeffe,
Juliette Godin with
Rural Transport
Co-ordinator
Yvonne Brosnan.*

Clustering Small Rural Schools

Included in the delegation was John Whyte of St. Patrick's Teacher Training College, Drumcondra who was enthused by the reaction of the Irish schools to the Spanish model. Subsequently a successful application to implement a pilot was made to the Irish Primary Principals Network which funded the development of a cluster between the five schools.

This phase of the project builds on a series of local development actions undertaken by IRD Duhallow, including the establishment of a network of primary school principals, preventative education projects in primary schools, training for parents' associations, information workshops and the development of youth organisations.

By coming together for these actions, primary schools began to appreciate the value of inter-school co-operation. The project includes workshops on specific subjects as well as educational trips for the pupils to Dublin and to the Garda Training College in Templemore. It is being evaluated as part of a Pobal Case Study on Addressing Educational Inequalities in the Rural Context. We look forward to the findings which are due to be published later this year.



Youth & Education Officer Marion O'Sullivan presents Sean Kelly, President of the GAA with an IRD Duhallow annual report at the rural schools clustering visit to Croke Park.

Attending the launch of the Living Scenes Project in Millstreet are members of Millstreet Community and NUI Galway with Jack Roche, Chairman of IRD Duhallow.



IRIDE - Imaging Rural Identities in an Enlarged Europe

Another inter-territorial, trans- national LEADER funded project is targeted at youth in Duhallow and Women in Clare LEADER. It has involved a multi-disciplinary team including the department of Agribusiness, Extension & Rural Development in University College Dublin, IRD Duhallow and Clare LEADER, and two part- time image professionals. The trans-national component, involves liaising with institutes including CLM, the University of Pisa and LAGs in Italy, The Netherlands and the Czech Republic and Local Action Groups including Far Maremma in Tuscany, Kromme Rijn in the Netherlands and will culminate in an exhibition in Brussels at the end of the year. Duhallow has focused the project youth; Banteer Youth Group and Rathmore Social Action Group in Kerry. The main objective of this project is to capture the meaning of local rural identity through the use of photography and video. Both Duhallow groups exhibited their findings at separate launches in Banteer and Rathmore.

Technology Pilot Outlab

Heritage as an Outdoor Laboratory for Innovative Science Teacher Education (OutLab) is a Science Teacher Education Project which is sponsored by the EU Commission.

Knockclarig Primary school has 30 pupils and is part of a European funded pilot initiative to introduce technology in order to reduce isolation and increase access and improve learning. With technical support from Tim Lavery of Kerry Education Service, school Principal Thomas Roche and his classes have accessed the latest palm held technology and officially launched the Outlab Project this year with partner delegates from 6 different EU countries including Italy, Cyprus, Sweden, Denmark and Spain as well as Romania.



Will you go first or will I?

This project aims to develop innovative teaching methods and tools which demonstrate best practice models for the use of heritage sites in Europe. It is a three year project and will explore the premise that the decreasing interest in science is due partly to existing teaching methods and they also propose to compare and contrast existing science teaching curricula and pedagogy in each country. Each of the 30 students in Knockclarig has a palmtop computer which they use to do some of their homework as well as to assist in undertaking this project.



Decision Time: Students from Colaiste Treasa attending the Careers exhibition in the Edel Quinn Hall, Kanturk with members of an Garda Síochána.

CLÁR

The CLÁR Village and Countryside Enhancement Programme is an innovative programme combining the efforts of Local Authorities, LEADER Groups and other State Agencies to prioritise and target investment into rural communities which have suffered sustained rural depopulation. IRD Duhallow administers the Village and Countryside Enhancement section of the programme on behalf of the Department of Community Rural and Gaeltacht Affairs.

We welcome Minister O'Cuiv's decision to relax the qualifying criteria to 35% population loss, which has increasing the number of areas benefiting from CLÁR funding. In addition, funding for CLÁR areas was almost doubled to accommodate the increase in areas designated. These announcements will positively affect the Duhallow Region, with 31 of the 33 Duhallow communities now eligible for CLÁR prioritisation.



Development of a picnic area in Ballydesmond village.

IRD Duhallow welcomes the new communities into the CLÁR programme and looks forward to working with Kerry County Council to administer the programme for the first time in our Kerry Region. IRD Duhallow continues to work effectively with Cork County Council to support CLÁR projects. Under the CLÁR programme, LEADER groups play the lead role in the Village and Countryside Enhancement Programme and are responsible for the promotion and awareness- raising of the programme in CLÁR communities.

CLÁR primed the investment of €1.2 million in Duhallow in 3 years.

Spent on: Village Enhancement, Group Water Schemes, Forestry Roads & Bridges, Local Improvement Schemes, School Playgrounds and Flashing Road Lights, Small Group Water and Sewerage Schemes and Three Phase Electricity

2003	2004	2005
€282,000	€438,332	€495,437

The success of the CLÁR Village and Countryside Enhancement programme is evident in the improved physical appearance of participating villages. In the past year, projects totalling €165,562 were completed in ten Duhallow villages. In addition, the CLÁR programme's emphasis on voluntary contribution has underpinned the spirit of volunteerism in Duhallow.



As part of the Glouneen Rivers project, a bridge was put in place over the Araglen river. The photos above show the stages of development of the bridge from construction of the bridge, transportation to site and putting it in place on location.

CLÁR village enhancement, over the past three years, has had positive effects on local development. In Rockchapel, for example, 27 planning applications were submitted to Cork County Council in the past year, an increase of 33 per cent on the previous year and an unprecedented increase on any year prior to the introduction of CLÁR. This proves that an enhanced village with good footpaths, lighting and recreational facilities in addition to local enterprise and childcare facilities, will attract young people to set up home.

Furthermore, CLÁR and the ESB provide a very attractive subsidy for small businesses who want to have their electricity upgraded to three-phase. In the Duhallow area, CLAR funding for conversion from single to three-phase electricity amounted to €57,300 last year.

Last year, communities came together and pulled out all the stops to successfully complete projects on time. IRD Duhallow applauds the work of these communities for the betterment of their own areas.



Planting of shrubs and picnic area enhance Rathcoole village.



Across from the school and church in Knockaclarig, landscaping has enhanced the physical appearance of the area.

Rural Transport Initiative



Yvonne Brosnan

*B.A. (Information Systems Management),
Diploma (International Business),
Certificate (E-Commerce)*

Appointed in February 2003, Yvonne is responsible for the planning, implementation and overall day-to-day management of the Duhallow Area Rural Transport (DART) Project. She assists in the recruitment and supervision of Passenger Assistants and

Administration Staff. She generates reports for Pobal, and represents IRD Duhallow on the Board of Kerry Community Transport.

D.A.R.T. - Duhallow Area Rural Transport

The Rural Transport Initiative (RTI) was launched nationally in 2001 "to encourage innovative community-based initiatives to provide transport services in rural areas with a view to addressing the issue of social exclusion in Ireland". It is funded by the Department of Transport under the National Development Plan. From the outset older people were the dominant users of services, but the Rural Transport Initiative is also a valuable resource for younger people, those with disabilities and many others in rural areas. One of the most significant features of the RTI is that it provides door-to-door transport, thus overcoming difficulties associated with age, both young and old, immobility and isolation.

Staff members of the DART team are back row from left: Nancy McGrath, Vincent McDonnell, Julie Linehan and Gretta Guiney. Front: Yvonne Brosnan, Co-ordinator and Mary Breen, Administrator.



Since April 2003, The Rural Transport Initiative in Duhallow branded locally as D.A.R.T. - Duhallow Area Rural Transport, has made a huge impact on the lives of many people in the Duhallow Region. This year has seen an increase in the services we provide to Youth and Elderly.

In 2003, DART carried almost 4,000 passengers, the service saw a dramatic increase in its second year of operation with the passenger numbers soaring to almost 16,000 2005 which was the third year of operation saw passenger numbers increase again to over 18,000. We are happy to report that this trend is set to continue in the current year.



A DART bus en route in Rural Duhallow to pick up passengers from their homes and take them to Kanturk.

Duhallow has accessed the Community Services Programme to staff the initiative with a co-ordinator, administration staff and passenger assistants, which means that the maximum amount of RTI funding goes on the provision of services. The Board of IRD Duhallow also took the decision to subcontract eleven small transport enterprises in the Duhallow Region to operate the DART service, thus ensuring their viability as small businesses.

DART Services

The weekly services from the rural areas to towns and villages in Duhallow have provided a life-line to many people living alone or in isolation and has revitalised services in rural communities as well as local businesses. D.A.R.T. continues to provide daily transport to Millstreet and Kanturk Daycare, where patients, including those with mental ill-health receive medical and social supports. D.A.R.T. also provides transport services to IRD Duhallow's Social Satellite Centres where elderly people can enjoy a meal and a social evening in their local community centres weekly.

A feeder service is provided by DART, connecting to Bus Eireann services in and beyond the Duhallow Region, which caters for local people, students and visitors to the region. The number of people availing of our daily service to Mallow Hospital for outpatient appointments has increased significantly in the last year.

D.A.R.T. provides a daily transport for children attending the newly established Afterschools' service in Newmarket from their primary schools in the town and outlying villages to the centre in Newmarket. Parents are thus free to avail of training or work full time. The service benefits low income families where the family car is used by the bread winner and Afterschools services were out of their reach. Similarly DART facilitates the Dyslexia support classes in Boherbue.

RSS participant Mary Golden ensures the safe delivery of the children attending the Afterschools in the James O'Keeffe Institute. The DART service picks up the children from their schools and drops them to the afterschools facility where they are met at the door by Niamh O'Mahoney, Afterschools Co-ordinator (right).



IRD Duhallow introduced English language classes for the growing Polish Community in our training centre in Boherbue. D.A.R.T. provides transport for the participants who travel from Rathmore and Kanturk to Boherbue twice weekly.



Passengers utilising the DART service to the NTDI, Youth Reach and Davis College Mallow.

The continuation of funding from the Department of Social and Family Affairs for holders of Free Travel Pass is vital, but an increase has been sought as the €2.30 per passenger per journey is not sufficient. The number of Free Travel Pass holders using the D.A.R.T. is increasing every year.

Last year we welcomed the decision by Minister for Transport Martin Cullen T.D. to continue funding for the Rural Transport Initiative. However, additional funding is required to extend transport services in Duhallow to meet the growing demands.



DART provides a weekly service for people attending the COPE Foundation in Mallow and Cork. This service is contracted to Bus Driver John O'Donoghue with passenger assistant Nancy McGrath.



Passenger Asst Michael O'Sullivan aids passenger Mimi O'Riordan to disembark safely from the DART bus with her shopping.

Employment and Training

“An Individualised and Targeted Approach”

– Job Centre’s Mission Statement

IRD Duhallow has operated the Job Centre since with over ten years. The aim of the Job Centre is to provide one to one supports and advice and guidance to disadvantaged and marginalised individuals in seeking access to employment and training opportunities and ultimately enhance their employability. The centre also provides supports to individuals who are unable to work in mainstream employment and need assistance in securing sheltered work through FAS CE, the Community Services Programme and the Rural Social Scheme. The Employment and Training officer has developed close links with the Rural Social Scheme Supervisors, the Enterprise Officer and the Low Income Smallholder Supports Officer to achieve this aim.



At the Careers Exhibition in Kanturk, Diane Devitt, Employment and Training Officer discusses training opportunities for Duhallow people at Mallow College of Further Education.

Further training and education is the key to gaining suitable employability. The Job Centre screens and assesses every candidate that registers, in order to evaluate their training needs, and to determine what type of work best suits a person’s experience to date. At the Job Centre people receive advice on different courses available to them, and this can sometimes be enough to start a person on their chosen career path.

In 2005, over 300 individuals received individualised support and information about careers and further education and training, employability and interview skills.

Over 150 people participated in locally delivered training courses, specifically targeted to their needs as identified through the Job Centre. 60 people gained employment in local businesses as a result of the supports provided from the Job Centre.



CV preparation and interview skills are part of the advice and guidance provided by the IRD Duhallow Job Centre.



Participants on the UCC Diploma in Community Education course which is being run on an outreach basis in Duhallow.

The Diploma in Community Education

In 2005, the Cork County Education and Training Audit highlighted the importance of developing more outreach programmes in partnership with the local development sector. The audit recommended that “outreach courses be available above diploma level, and that trainees be equipped with relevant skills, that are applicable in a fast changing labour market.”

In keeping with the Audit’s recommendations, IRD Duhallow, in partnership with UCC, delivered the Diploma in Community Education, last September. IRD Duhallow’s Employment and Training Officer identified the need to deliver targeted third-level training to local people. The Diploma in Community Education provided an excellent opportunity to gain a Diploma accreditation from a Third Level University. IRD Duhallow linked with Hannah Weste-Fitzpatrick, Adult Education Course Co-ordinator, University College Cork. IRD Duhallow co-ordinated the advertising and administration for the course and were delighted with the number of participants who decided to avail of this excellent educational opportunity. Eighteen people participated on the course, which was delivered on an outreach basis in the IRD Duhallow Training Centre in Boherbue. Feedback and evaluation have shown that the course very well received and participants would like to progress to a degree programme when they complete their Diploma, in May 2007.



IRD Duhallow Training Centre, Boherbue.



Bernadine O' Riordan, Acting Employment & Training Officer aids a Job Centre Client with their Curriculum Vitae.

The Job Centre also provides a service to local employers seeking a suitably qualified and experienced labour force. We provide possible candidates from our extensive database to local business and we also design and deliver training courses that meet the needs of local employers.

Throughout 2005, the Job Centre placed individuals in diverse types of employment, ranging from temporary retail staff, to office administration and accounts, to payroll clerks. Childcare was also a significant area where placements were made attributable to increasing number of EOCP funded community childcare facilities in Duhallow. Over 40 local individuals were trained in 2004 through a FETAC accredited Childcare Course delivered by IRD Duhallow. This aided the job placement proves last year.

IRD Duhallow's Employment & Training Working Group oversees the Job Centre. Statutory agencies take part in this Working Group. Partnership with The Dept of Social and Family Affairs enhances the Job Centre's success.



Don Crowley, Chairman of Employment & Training Working Group & Billy Murphy, Vice Chair, review the implementation of the Employment & Training Plan.

Introduction to Computers Course

IRD Duhallow identified the need to provide an Introduction to Computers Course. Many local people do not have the basic IT skills required in mainstream employment. Last year, the Introduction to Computers Course was held in the IRD Duhallow Training Centre and over 60 people participated on the course. Feedback from the course was very positive and many individuals saw the course as a stepping stone to progress their IT skills. IRD Duhallow anticipates that this course will be followed up by a more intense progression course. The introduction of Broadband in the Boherbue area will enable internet and e-mail access by course participants.



Paul Britley, participant on the advanced computer course under tutors guidance.

The Back to Education Initiative 2005

The Back to Education Initiative is funded by The Department of Education and Science. Its key objective is to empower the target group to actively participate in social, civic and economic life, to communicate effectively, and to develop the skills of learning to learn. The Back to Education Initiative is part of IRD Duhallow's response to educational disadvantage. It focuses on a small number of participants, including Foreign Nationals, Lone Parents, the long term unemployed and those suffering with a disability. The delivery of the BTEI in Duhallow offers an opportunity for young people and adults with less than second-level education to access core skills in self-development as well as progress to further education.

The course runs three days a week, for a six month period, in the IRD Duhallow Training Centre in Boherbue. During this time, the participants complete FETAC accredited courses. They become proficient in computer skills, office procedures, occupational development, and communication skills. Participants also learn the benefits of working in a group.

Completing a course and gaining accreditation for their work is a great achievement for participants. For some, it may be their first time to sit an examination, which can be daunting. However, the personal and tailored approach of the BTEI trainers gives the participants the confidence to prepare for examinations. All participants received either a merit or a distinction in the IT skills. This is a fantastic achievement and validates the importance of having such a programme.



Participants on the Back to Education Initiative with Minister for State for the Department of Education & Science Sean Power.

Since its inception IRD Duhallow Job Centre has:-

- Created 780 new jobs
- Provided over 3,500 training places
- Placed over 500 individuals in employment
- Provided certified childcare training to 70 Duhallow Women
- Provided bursaries for over 170 individuals to pursue adult and continuing education courses
- Developed links with third level universities and colleges to deliver certified courses locally in Duhallow

Childcare



Children attending the Newmarket Afterschools facility.

Childcare continues to be a priority strategy of the working group. The responsibility for funding and development has been taken over by the Department of Health & Children with Brian Linehan T.D as the Minister. It is expected that the focus may change some what, from purely an equality perspective to a more child focused initiative. The County Childcare Committees have been given more responsibility in administering the programme. Eileen Linehan of IRD Duhallow has taken up the seat for the Local Development groups on Cork County Childcare Committee.

Kerry County Childcare Committee

Kerry County Childcare Committee continues to subcontract its animation and community project development brief to the Local Development Groups with excellent results.

Two workshops for committee training have been organised for Duhallow community childcare providers in association with Kerry County Childcare Committee. A workshop on Language and Play was delivered to development workers in Tralee by the BASIC Skills agency which operates in Wales. Subsequently IRD Duhallow presented this programme to parents in the Rathmore area. The concept behind this initiative is to promote the importance of play and language in a child's life and that parents are a child's first educator.

Progress on Child Care Projects

There are three new facilities in the process of development in Rathmore, Banteer, and Boherbue. Full day care facilities have already been developed in Millstreet, Ballydesmond and recently in Ballyhass. A number of pre-schools and Mother & Toddler Groups are operating in Rockchapel, Meelin, Lyre & Kilbrin and the new Afterschools service for 4 to 12 year olds has commenced in Newmarket with the Rural Transport service collecting children from a wide catchment area.



Signing the contract for the new community childcare facility in Banteer are back row from left Tadhg Buckley, Buckley Bros, Shauna Crowley, Cllr Pat Buckley, John Buckley, Buckley Bros, Kieran O'Riordan, Buckley Bros and Noreen Buckley. Front Row from left, Fr. Ryan, PP Banteer, Timmy Buckley, Buckley Bros, Denis Withers, Sheila Foley and John Kirwan, Banteer Community Childcare.



Co-ordinators of the Newmarket Afterschools Project, Tommy Clifford & Niamh O'Mahoney.

Boherbue, Banteer and Rathmore have been awarded capital grants for new facilities. They have signed contracts with builders and site works have commenced. These three communities are operating from temporary facilities at present and expect to be in a position to move into their purpose built facilities within the next twelve months. Ballydesmond Creche is fully operational for over a year and caters for over 60 children opening up new opportunities for parents in the region which spans the county bounds. Many of the children using the service are from the Kerry area.



Paul Gallagher, Chairperson of Ballyhass Community Childcare, shows IRD Duhallow's Youth & Education Officer Marion O'Sullivan their recently completed childcare facility.

New Application for Full Day Care

Bweeng and Donoughmore Communities have been working with Cork County Childcare Committee to prepare a submission for two new integrated childcare facilities. Sites have been identified by the groups in their villages and they are awaiting a positive outcome from the Department.



Newmarket Afterschools Group at Newmarket Kiln.

Duhallow Community Food Services



Marie Twomey

Marie was appointed Manager of DCFS in December 2004, having worked in the food industry for twenty years. She has a Diploma in Business Management, as well as City and Guilds Accreditation 706/1 and 706/2 and WSET Wine Development Board of Ireland, Advanced Cert.

Duhallow Community Food Services is a Community Enterprise which was established and is managed by IRD Duhallow, arising from a European Social Fund Article VI pilot project. The programme provides a meal service to those who are not in a position to cook for themselves and are isolated because of age, illness, lack of transport or other disadvantages that result from living in a rural area. Duhallow Community Food Service also provides job opportunities and training to people who are long-term unemployed or people with disabilities.



Liz Walsh

During the period of uncertainty in funding under the FAS Social Economy Programme, the Food Centre was very grateful for the tremendous support of the IRELAND Fund. This fund provided essential funding of €15,000 which allowed the Food Centre to continue its vital services. The HSE Southern Region also provides financial support with an annual grant of €6,200. Thus, the Food Centre has been able to upgrade its equipment and maintain the premises to the highest food hygiene standards. Another delivery vehicle was purchased during the year which enables us to deliver on new routes to those in need.

The transfer of responsibility for the programme to the Department of Community, Rural and Gaeltacht Affairs, is welcomed as is the change in emphasis from a labour market intervention to a community services initiative. This means we can now recruit one in three of our staff from a skilled base, which of course impacts positively on those who need support and guidance. We wish to acknowledge the support of FAS over the past three years, in particular Paddy Carlton and June St Ledger.

Duhallow Community Food Services is also indebted to the many local businesses and customers who support us through the purchase of our home baking products. Without this help and support, the sustainability of the Food Centre would be uncertain.



Marie Twomey, Manager, DCFS and Noreen Angland preparing fresh baking and salads for Duhallow Farmers Market.



Caroline O'Keefe displaying the decorative icing work available on cakes from the centre.

Nora Dennehy, Chair of the Social Economy Working Group making a presentation to Fr. Pat McCarthy, on his retirement from the Working Group.



The Food Centre's Outside Catering Service has expanded greatly over the past twelve months. It is now used regularly for occasions such as Parties, Conferences, In-House Gatherings, Retreats and other private functions. Profits from outside catering now play an important role in bridging the gap between production costs and the subsidised price the elderly pay for their meals.



Caroline O'Keefe and Den Lane preparing to dispatch the meals.



Noreen Angland with John Daly in the background preparing fresh apple tarts for sale in local shops.

Duhallow Community Food Services continues to expand its Meals Service. It now provides over 500 meals per month to local communities. Some customers avail of the home delivery service, while others gather at their local Community Centres in Kiskeam, Banteer, Rockchapel, Newmarket and Meelin, in order to enjoy the meal service in the company of their friends. With future demographic trends showing a significant greying of the population, this service is set to expand to an increasing number of communities.



Ruth O'Sullivan maintaining hygiene standards in the bakery unit in DCFS.

Community Service Participants working in the Food Centre have benefited greatly from the experience and the training that is provided. Improvement in self-esteem, development in skills and working in a team environment has reflected positively on their wider community and community circles. The allocation of four RSS participants to augment the staff has been a great boost to morale as they contribute to increased production year on year.

IRD Duhallow is proud of the consistently high standard of work of all the staff in Duhallow Community Food Services. We acknowledge the important role Marie Twomey, Project Manager, plays in this.

Eileen Scannell and Eileen O'Keefe preparing meals for the elderly as part of the meals and wheels service offered by the company.



Culture and Tourism

Strategic Plan

In its Strategic Plan summarised on page 19 of this report IRD Duhallow chose as its theme “Making the best use of Natural and Cultural Resources” in recognition of the latent potential the sector has to offer Duhallow and its visitors.



Pat Mulcahy takes a group of children from the Rockchapel Cultural Camp for a ride on his Horse and Creamery cart to illustrate how milk was taken to the creamery in the past.

Underpinning the strategies is the principle of working in Partnership with Cork Kerry Tourism, The Irish Sports Council, The Southern Fisheries Board, Duhallow Communities, Landowners and Farmers. In this the final year of implementing the Strategic Plan it is uplifting to see that much has been achieved by this partnership and to a very high standard. Central to our culture and tourism development strategy is the encouragement and support of communities and voluntary groups in developing local facilities and reviving traditional patterns and cultural activities. This report could not possibly attempt to capture the projects individually in the space available however we have included a representative selection of projects which will give a flavour of the wealth that the Duhallow region possesses.



Members of Laharn Community Action at the opening of Laharn Community Cultural & Heritage Centre in May



Sliabh Luachra

The Sliabh Luachra region of Duhallow where the traditions have lived undisturbed and unchanged for generations is a priority. To preserve the real authentic style of traditional music and culture Rockchapel Comhaltas has been supported to provide traditional music, song and dance workshops for young people during the summer. Historical Societies like Aubane and Cumman Luachra are flourishing and prolific in their production of texts and books of enormous historical and heritage value. The Kilcorney Feis, one of the oldest in the country has in the past received support to put it on a firm footing whereby it now operates on a break-even basis with local sponsorship.

Laharn Cross has renovated its old primary school building and developed a Culture and Heritage Centre. Bruach na Carraige in Rockchapel and the Glen Theatre in Banteer continue to flourish having been developed with LEADER assistance. Duhallow has another unique resource in that it boasts no fewer than three thriving Pipe Bands. Training Supports have been offered to them with Cullen Pipe Band receiving a training grant this year.



Lenora O' Callaghan & Norma Walsh playing their instruments at Rockchapel Cultural Training Camp which runs on an annual basis aiming to promote Irish culture, music and dance among young people.

Tourism Accommodation

The quality of the new self catering products emerging is very encouraging. Maura and Mossie Archdeacon were supported under the agri-tourism measure and developed a viable on-farm enterprise by renovating an old farmhouse for self catering accommodation. On inspection by Cork Kerry Tourism this cottage was awarded four stars.



Maura & Mossie Archdeacon transform their old farmhouse for self catering accommodation.

Walking in Duhallow

The Duhallow Way is part of the Way Marked Walking route which spans Ireland and indeed forms part of the European, Bulgaria to the Atlantic route. It has been refurbished with support from the Rural Social Scheme and certified by the Irish Sports Council. Phylis & Tony Murphy received support under the agri-tourism measure to enhance their woodland walking amenity at Glenrath, to provide leisure and information facilities by renovating two very old stone buildings for this purpose. They have established a high quality walking centre where different walking itineraries or packages are available for the Duhallow and greater region.



At the launch of the book “A tragic Troubadour” written by Fr. John J. O' Riordan.



Rivers for Angling & Leisure

Trojan work has been done with LEADER support on three more angling river stretches. The Allow and Dallow in Kanturk and the Curraigue in Kilcorney have had sensitive conservation and development work done during the year.

Rural Cork Cycling Route

IRD Duhallow has played an active part in the development of the Rural Cork Cycle Trail from Rathmore in Kerry, to Youghal in Cork in partnership with Cork County Council, Blackwater Resource Development, Ballyhoura Dev. Group, and East Cork Area Development.



Jackie Daly, native of Kanturk plays his accordion at a traditional Irish music night



Chairman of IRD Duhallow, Jack Roche with Dan Joe Kelleher of Millstreet Local TV Network.

Women's Forum



At the Women's Forum AGM, Patricia Messenger, County Sound (centre), addressed the issue of the Role of Women in the media and the challenges that exist. Pictured with Helen O'Sullivan Community Dev. Officer, Judy O'Leary Women's Forum, Caroline Fleming, Chair and Jeanette O'Connell, Women's Forum.

Introduction

The Duhallow Women's Forum is now in its ninth year of existence. It has grown in the last year and represents seventeen women's groups and continues to act as an advocate for the women of Duhallow. The forum is represented on the Board of IRD Duhallow and on a number of key working groups. It is also affiliated to the National Women's Council of Ireland thus allowing the Forum to play a significant role in local and national policy and decision making. The Forum promotes gender equality in Duhallow and acts as a medium for collaboration and networking for a wide range of women's issues.

"Women in the Workplace & Entrepreneurship: Opportunities in Duhallow"

The Duhallow Women's Forum chose as a title for its annual conference "Women in the Workplace & Entrepreneurship: Opportunities in Duhallow" to focus on issues such as gender equality in the workplace, opportunities for women interested in setting up their own business or in returning to the workplace. Keynote speakers at the conference were Theresa Murphy, National Women's Council of Ireland, Deirdre Fox, Comhar LEADER na hEireann, Patricia Kennedy University College Dublin, as well as Gianna Ferguson of Gubbeen Cheese & Nicola McMahon a Local Entrepreneur. Gianna and Nicola, both successful entrepreneurs, thus provided an insight into setting up in businesses, and detailed the opportunities and challenges that they both encountered in the process. Through the support of Duhallow Area Rural Transport, transition year students from secondary schools in Duhallow were able to participate at the conference.

Women in Community Development

The title of the seminar held in conjunction with the Duhallow Women's Forum AGM was "The Role of Women in Community Development in Rural Ireland". Sr. Maureen Lally of Ballintubber and a member of South West Mayo LEADER was the unanimous choice as guest speaker on the night and gave a passionate speech on the issues of social inclusion in small peripheral areas in Ireland. In particular, she highlighted the important role women's groups play in these areas as well as the need to expand on the good work that these groups do.



Members of Duhallow Women's Forum with speakers at the Health Info. Evening, L to R: Noreen Murphy, Una O'Shiel, Speech & Language Therapy Manager, The HSE, Dr. Mary Joyce Leader, Kathleen O'Mahony, Judy O'Leary, Martha Courtney and Caroline Fleming.

Awareness Raising Events

Each year the Forum hosts information seminars which are of particular relevance to women but are open to all the public. This year's seminar on "Multiple Sclerosis" was aimed to raise awareness of the disease and to highlight the support that MS Ireland offers in the area. Guest Speakers on the night were Dr. John Bourke and Maura Murphy of MS Ireland.



Members of the SAOI Elderly Group attending the Respecting the Role of the Elderly Conference at Bruach na Carraige with Speaker Prof Eamon O'Shea, NUI Galway and Helen O'Sullivan Community Development Officer.

The Women's Forum members know that women in rural areas such as Duhallow are often very isolated and at risk of depression

They also recognise the social pressures on women and in particular young girls today to have a particular appearance which can lead to them developing eating disorders. In response the Duhallow Women's Forum held an information seminar on Health Issues including: Depression, Eating Disorders and Speech & Language Therapy Services. The relevance of the topics was reflected in the capacity audience that turned up on the night which necessitated moving to the larger facility. Dr Mary Leader spoke about eating disorders and judging by the audience response this is an issue of which unfortunately, we will hear a lot more of in the coming years. The Presentation by Bec Fahy of Aware again struck a cord and without doubt depression is a growing phenomenon in all rural areas. The need for an expanded Language Therapy Services was also highlighted by the number of people the topic attracted.

Networks & Linkages

The Forum is affiliated to the National Women's Council of Ireland and has highlighted its concerns on several issues. The forum continues to strengthen its lobbying power while also ensuring that the voice of Duhallow Women is heard in policy and decision making.

Maura Walsh, Manager of IRD Duhallow was honoured to be invited to address the National Women's Council's seminar to mark International Women's Day on the topic of "Women in Leadership Roles."



Attending the conference on Healthy Eating.

Domestic Violence Initiative

This year the Forum advanced on previous work to promote women's, children's and men's safety and welfare in situations of Domestic Violence by providing domestic violence training to a group of volunteers. This group meets monthly and undertook research into the appropriate services that are needed in Duhallow. The Forum held an information seminar to highlight the issue of domestic violence in Duhallow. Keynote speakers on the night were Kathryn Clarke, Author of "The Breakable Vow" and Pat Moynihan, Co-Coordinator of The West Cork Women Against Violence Project. This seminar placed particular emphasis on the barriers to rural women in accessing support services available. Workshops were also facilitated by Kathryn Clarke for three secondary schools in Duhallow, which addressed the different patterns of domestic violence including Dating Violence Prevention.

The Duhallow Women's Forum looks forward to the year ahead with confidence and is preparing to support its members to input significantly into IRD Duhallow's Strategic Plan.



Attending the Domestic Violence Information Evening in Millstreet are from, left: Caroline Fleming, Chairperson Duhallow Women's Forum, Pat Moynihan, West Cork Women Against Violence Project, Kathryn Clarke, Author The Breakable Vow, Judy O'Leary, Duhallow Women's Forum and Helen O'Sullivan, Community Dev. Officer, IRD Duhallow.

Duhallow Carers Group

The Duhallow Carers Group was established to ensure that family carers are provided with both emotional and practical supports, in their lives as carers. The Network also acts as an advocate for carers and gives a voice to their concerns and needs both locally and nationally. This Group aims to promote both the interests of the carer and those that they care for.



Kitty O'Mahony, Duhallow Carers Group

Kitty will represent the Duhallow Carers Group on the Board of IRD Duhallow. She has been an active member of the Duhallow Carer's Group since 1999. Kitty has cared for her daughter for the last 23 years and since joining the network has focused on raising awareness of disability in the region and fighting for carer's rights. Kitty is a newly elected member onto the board.

Traditionally in Ireland the rights of carers and their families have never been fully acknowledged. In many instances the life of a child with disabilities which necessitate constant care, is seldom accommodated in the same way we have come to expect for an able bodied child. The Duhallow Carers Group aims to provide carers and their families with the supports that are often lacking in society. The first Carers Group in Duhallow was established in 1999 when a small group of women who were caring for children with special needs came together once a month to discuss relevant issues and interests as well as looking to identify the supports that might be available to them from the state. Over the past two years the membership has grown to over twenty people, making it one of the largest carer's groups in North Cork.

Members of Duhallow Carers Group attending and information on Health Issues affecting Carers. Back row, L to R: Breda Lehane, Marie O'Keefe, Maimie Riordan and Bridget O'Connor. Front row, L to R: Eileen Murphy and Nora Mary Halloran.



Last year the group affiliated to IRD Duhallow and since then have become even more empowered to influence and shape the lives of carers and their families, through support, information sharing and awareness raising.

In November 2005 the Duhallow Carers Group held their first public information evening for carers. It focused on health issues relevant to them and their families and addressed the stresses that they encounter on a daily basis. Topics covered included chiropody, reflexology and de-stressing techniques. Carers are under the constant strain and pressure of caring for a person with significant disabilities on a daily basis and so it is necessary for them to take time out for themselves to renew their energy to continue their vital role. This information seminar raised awareness in the Duhallow Region about the Carers Group and the support services it provides for carers and reached out to carers who have not joined a group and need support.

In 2005 the Duhallow Carers Group was successful in applying for Dormant Account Funding for a manual handling course for its members. They are in the process of drawing down this funding and plan to commence this course shortly.

The Duhallow Carers Group is currently receiving support from Helen O Sullivan our Community Development Officer to design a specific training course entitled "Working Through Disability- A Complementary Approach" for its members which will include topics such as First Aid Training, Dance Therapy & Disability, and Art for Carers.



Attending the Carers Week 2005 Reception in City Hall, Cork were from left Kitty O'Mahony, Eileen Fitzgerald, Former Mayor of Cork, Cllr. Deirdre Clune and Breda Buckley.

It is IRD Duhallow's experience that the greater burden of care for the elderly, those with disabilities, children and young adults with special needs and dementia is falling on women. Very often these women are themselves elderly and although active find themselves in rural isolation perhaps not able to drive and totally tied to the house and their caring role. Their needs are seldom recognised and their sense of duty and loyalty to their loved ones prevents them from speaking out for themselves. These women save the state several millions of euro each year and a more concerted effort must be made across a number of Government Departments and Agencies to help them carry what society often wrongly perceives as "their burden" when it should rightly be shared so that it never grows to be a burden on any one person or family.



At a meeting of Duhallow Carers Group, L to R: Eileen Murphy, Maura Lehane, Bridget O'Connor and Maimie Riordan.

Our population is ageing, we know that. We also know that we are going to live longer and therefore more of us will live long enough to encounter age related conditions which will necessitate care. Home help services have been the life line for many families, Day Care Centres are a huge benefit but more places and more centres are needed.

Respite Care is in too short supply, and therefore infrequent to make it possible for families to cope with long term care in the home. Yet medical opinion tells us that those in need of care do much better amongst their families than they do in long term care. The Department of Health and Children wants families to take more responsibility for elderly parents and relatives in the future. If all this is to happen, something needs to be done about the often negative experiences of those left carrying the huge burden of care at the moment. That negative experience will surely not encourage any family to become involved in caring for relatives.

Regular locally available respite care of the highest standards must be developed. The number of respite beds in local hospitals needs to grow exponentially as the population trends would indicate. This is the only reassurance that will encourage families to participate in the care of relatives into the future. Without this essential service more and more of our elderly in particular, will have no option but to receive full time state funded care and generate massive hospital bills for the state to pick up. To those of us supporting Carers Groups and the carers themselves the choice for the state is obvious: come half way to meet us and we will provide the care!



Carers Group members discuss the future development of the group, L to R: Breda Lehane, Nora Mary O'Halloran, Kitty O'Mahony, Martina Golden and Breda Buckley.

IRD Duhallow FÁS Community Employment Scheme

Objectives of the Project

IRD Duhallow's Community Employment Scheme is designed to provide temporary community based employment to unemployed people, whilst carrying out beneficial work within the community. The valuable employment experience and training opportunities provided by Community Employment enhances and develops the skills of the participants, thereby improving their employment opportunities.



Paddy O'Connor
FÁS Supervisor

Appointed FÁS Supervisor in April 2001. Paddy graduated in November 2002 in Community Workplace Management through the National College of Ireland. Prior to joining IRD Duhallow Paddy worked in the private sector in Ireland and the UK. Paddy is Supervisor to 18 participants on community projects and develops individual training plans in consultation with the participants, as well as work plans for the communities. Considerable emphasis is placed on the development and progression of participants through training.

IRD Duhallow has once again sponsored a FÁS Community Employment Scheme for the Duhallow area. The scheme has an approved number of 18 participants working within the communities of Boherbue, Kilcorney, Aubane, Ballydaly, Banteer, Lyre, Dromtariffe and Rathcoole.



FÁS CE participant Denis Fleming undertakes Fire Safety Training at Health and Safety Services with Tim Ring, Tutor.

The work undertaken by the participants is of tremendous benefit to the communities. It focuses on maintenance and upgrading of community facilities such as GAA Pitches, Community centres, Parks and village greens. Banteer has developed extensive park, playground, walks and community playing pitch facilities which is used by a number of clubs including the GAA.

IRD Duhallow is keen that participants continue to avail of training programs on its CE Scheme. Many training programmes were conducted in the Duhallow area, these included: Manual Handling, Health & Safety Machine Maintenance, Occupational First Aid and Safe Pass Courses. One participant, James Humphreys is doing Specific training in Media web Design at the FAS training centre, in Cork city.



Jack Roche, Chairman IRD Duhallow with Maura Walsh Manager making a presentation to Kevin Davis, FÁS on his retirement from the Board of IRD Duhallow.



Mary O'Brien, CE participant providing administrative support to Duhallow Training Centre, Boherbue.

Progression to Employment

Two participants so far this year have progressed into employment. Dermot Murphy and Seamus Curtin both were low income farmers and have progressed onto the Rural Social Scheme.

IRD Duhallow acknowledges the huge benefit Community Employment is for participants however we are anxious that the current restrictions on participation including duration and age of participants be addressed nationally in order that the best results can be secured for the participants, communities and the Department of Enterprise Trade and Employment.



Having completed working at height training, FAS CE participant Jeremiah O'Leary paints Ballydaly Church.



Before & After: Jeremiah O'Leary restores the statue of Our Lord in Ballydaly (left) and right, the finished product.

Trans-national Partnerships



Michelle Mitchchink, Trader at Duhallow Farmers Market selling cheese to Eduard Kavala, a visiting LAG member from the Czech Republic.

Trans-national and Co-operation Projects

Trans-national and co-operation Projects are forming an increasing part of IRD Duhallow's Programmes. Although firmly in the LEADER portfolio of measures and one of the seven specific features of LEADER IRD Duhallow prioritises social inclusion themes for trans-national activity. Furthermore the two target groups identified in LEADER are Youth and Women therefore these groups will also be to the fore front of trans-national activity.

Co-operation projects is the title given to those projects, which because of their scale or perhaps scope, are best implemented on a regional or even wider basis.

While many of the projects are initiated within Duhallow some are on invitation from outside areas. In the past year or so several invitations have been received from the new member states of the EU who recognise the success of the LEADER Programme in Ireland and are anxious to adopt the Irish LEADER model in their own countries. It is the policy of the Board of IRD Duhallow to assist these groups associations and countries in so far as possible because our board appreciates the impact of the programme in Duhallow and is willing to share our experience with others who from time to time visit to experience rural development first hand.

The following pages give a brief snapshot of the high level and variety of activity in this sector and we profile one trans-national project which is underway currently.



Bernie Lynn Westmeath LEADER & Sabina Trench Wexford LEADER at the Irish LEADER stand at the rural tourism trade fair in Seville.



Maura Walsh, Manager, with Dr. Kimie Tsuchiyama of Ryokoku University, Japan on a study visit to IRD Duhallow.



At the European Commission Conference "Making the best use of our natural and cultural resources" held in Schuns, Austria L to R Ciaran Casey, ILSU, Cora Horgan, ILSU, Andrew McAlister, Jack Roche, Chairman, IRD Duhallow, Eileen Linehan, IRD Duhallow & Jeanne Deagon, Rural Dublin LEADER



Visiting Local Action Group from Czech Republic at Duhallow Farmers Market, Kanturk.



Tim Lavery, European Projects Co-ordinator with Kerry Educational Centre, Jack Roche, Chairman IRD Duhallow and Thomas Roche Principle Knockaclarig National School with representatives from other EU participants in the OUTLAB project



At the IRIDE Trans National project photo exhibition in Rathmore are, from left: Don Crowley, IRD Duhallow, Eric Hees, Guss Beugelink, Christa Nieuwhoff, from the Kromme Rijn LEADER group in the Netherlands, Julie Tritz, IRIDE Co-ordinator, Maura Walsh, Manager, IRD Duhallow and Wim Nell, The Netherlands.



Delegates from the Cezsky Zapad LEADER group in the Czech Republic visiting Cotters Self Catering Farm House.

IRIDE - Imaging Rural Identities in an Enlarged Europe

IRIDE, an inter-territorial, trans- national LEADER funded project targeted at youth in Duhallow and Women in Clare LEADER. It has involved a multi-disciplinary team including the department of Agribusiness, Extension & Rural Development in University College Dublin, IRD Duhallow and Clare LEADER, and two part- time image professionals. The trans-national component, involves liaising with institutes including CLM, the University of Pisa and LAGs in Italy, The Netherlands and the Czech Republic and Local Action Groups including Far Maremma in Tuscany, Kromme Rijn in the Netherlands and will culminate in an exhibition in Brussels at the end of the year. The main objective of the IRIDE project is to capture the meaning of local rural identity through the use of photography and video..

Duhallow selected two youth groups to participate in the IRIDE project; Banteer Youth Group in Cork and Rathmore Social Action Group in Kerry. Banteer youth club was founded in February 2001 with 35 members. It is under the umbrella of The Cloyne Diocesan Youth Services. It's members are from Banteer, Lyre, Kilcorney, Nadd, Gortmore and Lombardstown areas. Last year eleven students received their Gaisce Bronze awards (The Presidents prize). This year three members progressed to silver, while four were awarded gold. Rathmore Social Action Group is in its thirty-first year. The SAG consists of Brú na Sínear which is a Day Care Centre and Teach Íosagain which operates as a youth centre.



Dan Buckley of Clover Hill Food Ingredients, Millstreet discusses the impact of LEADER funding on his business with David Kosina from the Olomuc region of the Czech Republic.

The success of Rathmore SAG is largely due to the guidance of Jeremiah O'Donoghue who was named 'Kerryman of the year 2006'. The Social Action Group is a youth driven organisation that provides assistance and services to the elderly and anybody in need in the community. The group is run by local school students between the ages of 14 and 18 under the guidance and leadership of Jeremiah O'Donoghue. The aims of the SAG are to enhance the quality of life of people in the Rathmore community, especially the youth and the elderly, to raise young people's awareness of community needs and to give young people a concern for others, for the environment and especially for people who are deprived in any way.



Urszula Budzich-Szukala from Poland gets a lesson in traditional Irish music.

Both Duhallow groups exhibited their findings at separate launches in Banteer and Rathmore.



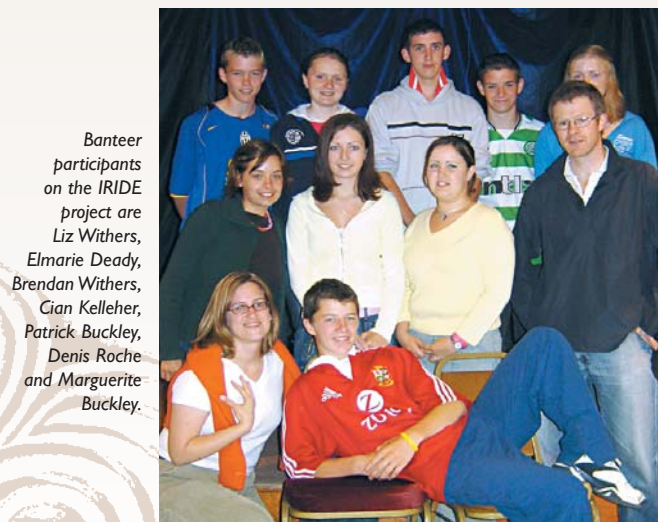
From the Rural Development Network of the Extremadura region of Spain Maria Jose Hormigo Guerrero and Aurelio Garcia Bermudez.



"We, Ourselves & Us". Participants on the IRIDE project from Rathmore SAG are Linda Brosnan, Joanne Carmody, Deborah Casey, Nora Coakley, Norita Foley, Grace Kelleher, Deirdre O'Connor, Breda O'Mahony, Jacintha O'Shea, Samantha O'Shea, Mary O'Sullivan, Carmel Pinkaow and Cara Reen.



At the European Commission Conference on "Making the Best Use of our Natural & Cultural Resources" held in Schruns, Austria, L to R: Beatrix Galandova from the Slovakian Rural Development Agency, Andra Karlsons from the Latvian Ministry and Maura Walsh, IRD Duhallow.



Banteer participants on the IRIDE project are Liz Withers, Elmarie Deady, Brendan Withers, Cian Kelleher, Patrick Buckley, Denis Roche and Marguerite Buckley.

Summary of Accounts

IRD Duhallow Ltd. Limited by Guarantee Summary of Accounts 2005

The financial information contained in this Summary of Accounts 2005 for the company's financial year ended 31st December 2005 is not the company's statutory accounts for that financial year. Statutory accounts for the financial year ended 31st December 2005 have been delivered to the Registrar of Companies. The auditors J.B. O'Sullivan & Co. in association with BDO Simpson Xavier have reported on the statutory accounts for that financial year and their report was unqualified.

Income & Expenditure Account, year ended 31st December, 2005

	€
Operating Income - Continuing Operations	1,552,040
Operating Expenditure	<u>1,549,480</u>
Operating Profit - Continuing Operations	2,560
Interest Received	<u>4,597</u>
Profit for the financial year	<u><u>7,157</u></u>

Balance Sheet, as at the 31st December 2005

Fixed Assets

Tangible Assets - Fixture & Fittings	42,308
--------------------------------------	--------

Current Assets

Debtors	281,372
Cash at hand & in Bank	<u>15,751</u>
	297,123

Current Liabilities

Creditors: Amounts falling due within one year	<u>(30,390)</u>
Net Current Assets	266,733
Total Assets Less Current Liabilities	309,041
Deferred Income	<u>(6,009)</u>
Net Assets	<u><u>303,032</u></u>

Capital & Reserve

Income & Expenditure Account

Balance brought forward	295,875
Surplus of Income for the financial year	<u>7,157</u>
Balance carried forward	<u><u>303,032</u></u>

Note 1 : Directors Remuneration

None of the directors who held office during the year received any remuneration.

Summary of Accounts

Reconciliation of EU & Government Grants

	LEADER	MRDP	ADM	EQUAL	RTI	FÁS CE	RSS	CHILD-CARE	DORMANT A/CS	COHESION FUND	TOTAL
	€	€	€	€	€	€	€	€	€	€	€
Balance at 01.01.05	203,592	75,035	(5)	(22,270)	419	(4,767)	2,441	(1,463)	-	-	252,982
Received in Year	455,820	46,343	602,822	22,272	139,148	238,604	43,307	5,411	-	32,500	1,586,277
RTI Fares	-	-	-	-	30,700	-	-	-	-	-	30,700
Deposit Interest Earned	2,274	540	513	-	-	-	-	-	-	-	3,327
Bank Charges	(196)	(23)	(8)	(2)	0	(404)	(11)	0	0	0	(640)
Disbursed in Year	(612,726)	(75,613)	(502,852)	0	(170,267)	(240,476)	(33,497)	(5,130)	(25,950)	(35,566)	(1,702,077)
Balance as at 31.12.05	48,764	46,282	100,470	0	0	(7,043)	12,240	(1,182)	(25,950)	(3,066)	1,995,331

Debtors:

Prepayments	€ 48,699
Trade Debtors	191,702
Other Debtors	40,971
	<u>281,372</u>

Creditors: Amount falling due within one year

Bank Overdraft	-
Accruals	30,390
Advance Income	-
	<u>30,390</u>

Share Capital:

The company does not have a share capital and is limited by guarantee.
The liability of members is limited to €1.27 each.

Programme Funds 2001-2006

	€	€
LEADER+	2,739,252	
MRDP	849,360	
Total LEADER Funds 2001-2006		3,588,612
LDSIP 2004-2006		1,475,670
EQUAL 2002-2004		181,113
RTI 2003- 2006		404,901
Free Travel Scheme Funds 2003 -2005		106,441
DART 2005-2006 (FAS Social Economy)		233,703
Overall Total Funds		<u>5,990,440</u>

IRD Duhallow Company Information

Chairman: Jack Roche

Finance Director: Don Crowley

Manager & Secretary: Maura Walsh

Bankers: BOI Kanturk

Auditors: J.B. O'Sullivan & Co./BDO Simpson Xavier,
Westboro House, Montenotte, Cork

Solicitors: Ronan Daly Jermyn, 12 South Mall, Cork

Registered Office: James O'Keeffe Institute, Newmarket, Co. Cork

Company Registration No: 17639

Date of Incorporation: 01-07-1991

Charitable Status: CHY 11039

Designated Charity: 016

Irish LEADER Network and ELARD



CLE staff members, Isobel Fletcher, Small Food Co-ordinator & Deirdre Fox, CLE Co-ordinator at the LEADER conference in Croke Park organised by the ILSU.

IRD Duhallow hosts the secretariat of Comhar LEADER na hEireann again this year and will combine the efforts of CLE Nationally and ELARD at European level to ensure the best Rural Development Strategy possible to serve all rural regions.



CLE Executive Members, L-R: Michael Ludlow, Vice Chairman, Maura Walsh, Secretary, Tom O'Donnell, Chairman, Martina Earley, Treasurer and Deirdre Fox, CLE Co-ordinator.

2005 has been another milestone for Local Action Groups in the ongoing development of rural communities in Ireland. This past year marked many firsts for CLE; In June 2005, Ireland was selected to host the Presidency of the European LEADER Association for Rural Development (ELARD) this honour went to IRD Duhallow's Chairman ; Mr Jack Roche.

Members enjoyed a packed afternoon of promoting LEADER with elected Irish MEP's in Brussels in June while also establishing relationships with the LEADER section in DG Agri. Jean Michel Courades and Piero Moro were both guests at the Chairs Conference in September held in Carrick on Shannon, Co. Leitrim, hosted by Arigna LEADER. September also saw the publication of CLE's brochure with capacity to carry the quick guide in a ready made plastic pocket on each brochure.

The Ploughing Championships were held in Mogeely, Middleton, Co. Cork, proved a huge success with plenty of interest and remarks to the three LEADER information stands strategically located on the site. The Minister for Community, Rural and Gaeltacht Affairs, Éamon Ó Cuív launched the new brochure and the Irish Presidency of ELARD at the event. CLE with Cavan/Monaghan LEADER put on an impressive two-marquee Crafts Fair. Duhallow had two exhibitors at the event.



Members of Comhar LEADER na hEireann with Brian Crowley, MEP in Brussels.

Jack Roche President of ELARD with Piero Moro and Mde Mauperon of DGAgri in the Commission Offices in Brussels.



Isobel Fletcher somewhat stole the show with CLE's Food Village which showcased the finest local produce from all over Ireland which had been supported by LEADER groups. Another first for CLE was the winning of the ACCEL contract from the Department of Enterprise Trade and Employment, to provide specific training to the small food business's throughout Ireland.

The Working Groups of CLE form an integral part of its development and support for its members. The Rural Social Scheme Working Group is chaired by IRD Duhallow through Maura Walsh. The past year has seen significant growth in the numbers coming on to the scheme with improvements in supervisors salaries and materials grants.



LEADER Network representatives from around Europe attending an ELARD meeting.

January heralded deadlines for lots of interesting portfolios; the Ireland Funds received over 3,000 applications for support, CLE is pleased to be associated with their work throughout the country through our co-ordinator Deirdre Fox who sits on the advisory panel during deliberations.

CLE has also forged strong links with the Carnegie Commission for Rural Community Development and Carnegie has teamed up with CLE to foster closer relationships with the European Commission.

Aside from a review of past activity, CLE has a full agenda up to the end of the current programme and without doubt it is because of its dynamism so many of our partner countries wish to model their networks on the Irish model, however unless they have the same interest and support from their Minister for Community Rural and Gaeltacht Affairs they will find their tasks more difficult to achieve and deliver.



Jean Michel Courades of DG Agri addressing ELARD members.



Jack Roche, President ELARD makes a presentation to Cathia Sengali CEO of Far Maremma which hosted the ELARD meeting with Andrea Brogioni.