

# IRD Dúhallow

PROGRESS REPORT | 2014 - 2015

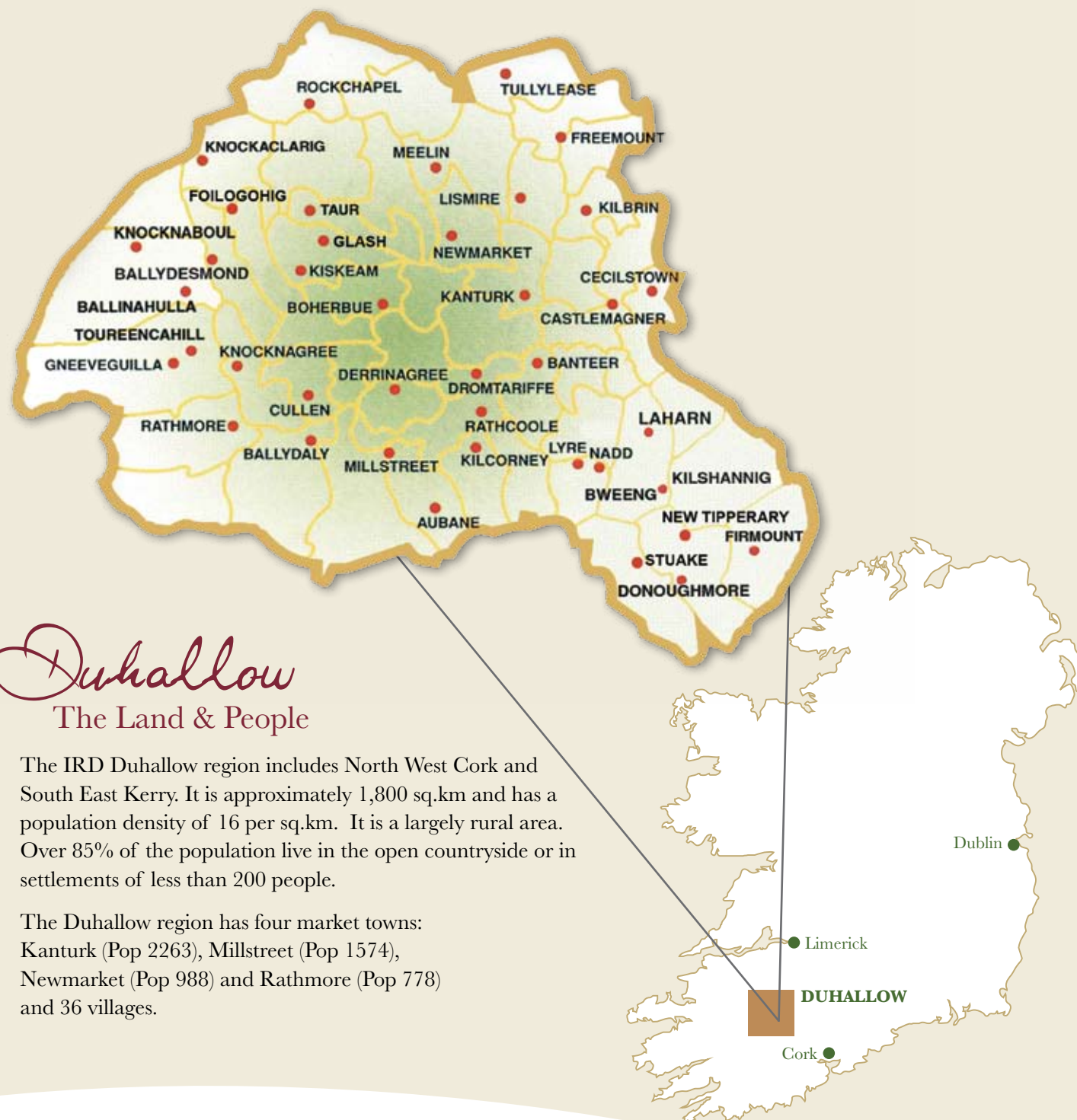


*Dúhallow*

THE SPIRIT OF RURAL IRELAND



# COMMUNITIES IN DUHALLOW



## Duhallow The Land & People

The IRD Duhallow region includes North West Cork and South East Kerry. It is approximately 1,800 sq.km and has a population density of 16 per sq.km. It is a largely rural area. Over 85% of the population live in the open countryside or in settlements of less than 200 people.

The Duhallow region has four market towns: Kanturk (Pop 2263), Millstreet (Pop 1574), Newmarket (Pop 988) and Rathmore (Pop 778) and 36 villages.

## IRD Duhallow

James O'Keeffe Institute, Newmarket, Co. Cork, Ireland.  
Tel: 00-353-29-60633 Fax: 00-353-29-60694  
Email: [duhallow@eircom.net](mailto:duhallow@eircom.net)  
Web Site: [irdduhallow.com](http://irdduhallow.com)



Designed by: Sheila Carroll Creative Republic  
Printed by: Kanturk Printers  
Photographs by: Valerie O'Sullivan, Sheila Fitzgerald and Eileen O'Connor

# Contents

	PAGE
Chairman's Address.....	2
Manager's Report.....	3
IRD Duhallow Board Members.....	4,5
IRD Duhallow Ltd Company Structure.....	6
Staff.....	7
LIFE+ SAMOK and RaptorLIFE .....	8, 9, 10
EPA.....	11
Agriculture .....	12,13
Environment .....	14
Duhallow Angling Centre of Excellence.....	15
Culture and Heritage.....	16, 17
Tourism.....	18
LEADER .....	19
LEADER Projects .....	20, 21, 22, 23
Enterprise.....	24, 25
Community Development .....	26, 27
LCDP & SICAP .....	28
LCDP Projects.....	29
Equality and Social Inclusion (Carers, Disability, Domestic Violence, Pal and Migrants) .....	30, 31
Employment and Training.....	32, 33
Youth and Education .....	34, 35
Equality for Women.....	36, 37
Mental Health and Towards Occupation.....	38, 39
Social Enterprise.....	40
SAOI .....	41
Warmer Homes .....	42
CE Scheme.....	43
Rural Social Scheme.....	44, 45
Tús .....	46, 47
DCFS .....	48



CEO Maura Walsh pictured with Past and Present Chairmen of IRD Duhallow:  
Don Crowley (06-09), Tim Lucey (95-97), Michael Twohig (09-12), Cormac Collins (12-14),  
Jack Roche (03-06), John Moynihan (01-03) and Jerry Sheehan (89-95).  
[Missing from Photo is Derry Fitzpatrick (97-00)]



## Chairman's Address

IRD Duhallow was founded over twenty five years ago in response to the needs of the various communities of the region, whether business, farming or local community organisations. Successive Chairmen and Boards have expanded and grown the organisation in response to the needs, opportunities and threats of these communities and it has been my privilege to serve as the eighth Chairperson. During my three years in office the company has seen off what was undoubtedly the greatest threat to its very existence but more importantly we have not allowed ourselves to be consumed, perplexed or paralysed by that threat. The Board of IRD Duhallow has also steadfastly kept, in equal focus, the opportunities offered to the region, delivering the final phase of its seven year strategy. To me this is a mark of a mature, confident and strong professional organisation. Of course we are not alone in this sector, there are other equally strong and professional bottom-up community led organisations that have done exactly the same thing. To any outsider looking in, it must appear very peculiar that a government policy, implemented with zeal, seeks to seriously weaken organisations like ours when the need to strengthen and resource was never greater, particularly when some of those looking in are based in Brussels. Rural Ireland has suffered most from the economic crisis that was not of its making. The one ray of light over the past six years had been the presence of the LEADER Programme which has built community capacity, provided directed support to small enterprises and trained those who found themselves unemployed and generated a good income flow in the local economy.

Over the past six years the Board of IRD Duhallow through its working groups and professional and dedicated management and staff has focused on a number of strategic initiatives, which we believe will be the corner stone of future economic development in the region. IRD Duhallow has worked in partnership with a number of organisations to achieve this base economic infrastructure. Through projects such as developing an Angling Centre of Excellence, a Raptor Conservation Project; a series of Looped Walks, a first class Pitch and Putt Course; a number of Astro Turf Pitches; a Cultural Trail focused on Sliabh Luachra Culture; Cultural Centres that can develop as summer schools and winter performance centres.

We have put in place essential Social infrastructure which includes a top class Rural Meals facility, a Community Laundry and a Furniture Revamp facility. Most importantly, we have provided training and mentoring to further develop the capacity of the communities and organisations delivering these services. Community Enterprises have been our flagship and will remain thus as we believe it is communities themselves that are best placed to identify, organise and deliver the services and jobs crucial to our area. We have won new contracts for new programmes - Skillnets on open tender and are starting a new LIFE Programme.

In carrying out my role over the past three years I have been greatly assisted by our Vice Chair Anne Maria Bourke. I am indebted to the seven former Chairs of the company who stepped into the front line beside me at a crucial time in the National and European negotiations on the future of organisations like IRD Duhallow. To this end I want to acknowledge the support of our MEPs and in particular, Liadh ní Riada and Marian Harkin and former MEP Phil Prendergast who have championed our cause and remained vigilant throughout. I also want to thank the Director General of DG Agri Jerzy Bodgdan Plewa and Ms Josefine Loriz Hoffmann, Head of the Audit Unit, for receiving our delegations and taking on board our views.

The Working Groups of IRD Duhallow are the lynch pins of the organisation and I want to thank those who have taken on the onerous and responsible task of chairing and leading each one. Regrettably this year saw us lose two former Board Members, Ms Caroline Fleming who represented the Women's Forum and Mr Noel Dillon Former Wexford and Cork County Manager, who have gone to their eternal reward. Ar dheis Dé go raibh a n-anamacha dílse.

Noel Chaired our Social Economy Working Group and since his retirement from the Board played a huge role in further developing and establishing new



community services to serve the entire region. He was a committed Cork man and devoted much of his free time to IRD Duhallow and the Duhallow region, for which we are truly grateful. I was delighted that he was well enough to open the refurbished Newmarket Pitch and Putt course and see the expansion of the Rural Meal Service and Community Laundry in operation. It has been my privilege to know and work with him as a fellow volunteer on the Board of IRD Duhallow. While we will miss him for a long time to come, he has left an indelible mark on our organisation and on Duhallow itself.

There are a number of Board members leaving this year having completed their terms of office. Community Representatives Sheila Crowley and John Kirwan and Inspector Tony Sugrue from the State Sector, Councillors Bernard Moynihan and Niall Kelleher along with Mr John Breen and founder member Michael Doyle were obliged

to step down in order to take up seats in the two new Local Community Development Committees. Their voluntary contributions to the company and the region have been immense but I know they will continue to support our work in their new roles.

I welcome our two new community representatives to the Board; Noreen Duggan and Mary Wallace, and Inspector Aileen Magner from the State Sector; Eimear Guiney from Macra na Feirme, and David Doyle from Kerry Co. Council.

The Management team and staff of the organisation under the dedicated, fearless and strategic thinker that is our CEO Maura Walsh, have succeeded in completing the delivery of another LEADER programme, a LIFE Environment Programme and a Social Inclusion Programme, while under a cloud of terrible uncertainty and in particular frequent, and what could only be described as disparaging comments placed in the public domain. Their professionalism and loyalty to the organisation is acknowledged by all in Duhallow.

We lost our Rural Transport Programme to a county structure during the year and it saddened me to have to sign the redundancy papers for the seven staff that worked with the programme from the start, growing it and developing it over ten years. The very deep cuts to the Social Inclusion Programme this year looks like taking out at least two more long serving staff despite their trojan work and this is truly a shame. Their expertise was never so badly needed in the region. As the Persian Sufi poet famously recalled the old Sages ring with the inscription "this too will pass" I have no doubt that it will, and when it does, IRD Duhallow will still be there to serve the communities that established us and we will be stronger than ever.

As this is my third and final year in the Chair I have been reflecting on the role IRD Duhallow has played, not only in the survival of the region, but in its development. The fact that Duhallow does not conform to any political boundaries but in-fact crosses two county boundaries and three municipal districts, has served to enable us to think "outside the box". Such municipal boundaries, while wholly necessary for democratic election purposes are in my opinion, of little use when looking at how industry, commerce, trade, environment or indeed community development organises itself and operates on the ground.

The Board has invested heavily, in terms of time and commitment to strategic planning and building its leadership capacity in order to better carry out its functions. Naturally, managing ongoing change has been a priority on the agenda in recent years and Declan Carey of ICHAS has led and mentored us as a Board and senior staff, and quoted Peter de Jager to us recently "sometimes being pushed to the wall gives you the momentum to get over it." With this legacy, I sign off as the out-going Chairman of IRD Duhallow in the knowledge that the Company is stronger structurally and even more embedded in the community. I wish my successor all the best and I can assure them of my support and assistance at all times.

**Cormac Collins**  
CHAIRMAN

## Manager's Report

The year under review has been a hectic one as it saw the completion of 4 significant programmes – The Local Community Development Programme, The LIFE + European Environment Programme, The Equality for Women Programme and LEADER. The accompanying audits and finalisation of reports put an additional workload on working groups and staff. The final year of any programme also presents the opportunity to review what has been achieved and to focus on delivering the remainder of the strategy and in the case of LIFE+ to hold a closing conference and field trip.

We are delighted to have been awarded a second LIFE Programme, focusing on the Hen Harrier at a time of controversy over habitat constraints, proving once again that the community will always have its finger on the pulse and diagnose the problems on time to address them. The LIFE Programme is run as part of our Enterprise Team managed by Eileen Linehan along with Dr. Fran Igoe, our Project Scientist. It reports to the Board through the Environment Working Group. I wish to thank Laszlo Becsy and Tommy Sejersen of DG Environment in the European Commission who audited the programme, our monitor Neil Wilkie of NEEMO EEIG, the LIFE Monitoring Team, Seosamh O'Laoi and Pat Martin in the Department of the Environment and also our partners, IFI and Pobal who have come on board for LIFE.

The LEADER Programme 07-13 or in the case of Ireland 09-13, is at close out phase and an independent evaluation is underway by Mary Immaculate College of University of Limerick in conjunction with CAPE Consultancy who have delivered their preliminary report. A more detailed account is given on page 19, however, I must refer to the fact that the targets, outputs and impacts set under the four main aims of human, cultural, economic and environmental development have all been met and in many cases surpassed. Furthermore, it supports our core belief that LEADER is a Development Programme not a fund for dispersal to those ready to take it. I wish to thank our Inspector Breda Dooley; and the Department of Environment, Community and Local Government Staff Finola Moylette, Deirdre Maloney and Gerry Kelly for their support.

We look forward to getting down to work with our communities, working groups and Board to draw together our next strategy to take us up to 2020. It will happen in a new planning framework of the Local Economic and Community Plan of the Local Community Development Committees of Cork and Kerry with a budget that is only 30% of what was available in the current LEADER programme and at a time when rural areas like Duhallow more than ever badly need sound local development.

Our RSS, Tús and CE programmes continue to provide community work placements for the long term unemployed. We were awarded an eighth Tús scheme during the year. The range and breadth of work being undertaken by participants continues to grow each year. RSS participants provided vital support for the LIFE Programme and will be joined by Tús participants on our new LIFE Raptor Programme. I want to thank TJ Fleming and Nora Durcan in the Department of Social Protection and also Assistant Secretary Kathleen Stack for her facilitation of Tús and RSS to partner our LIFE Programmes and Denis Leamy CEO of Pobal. This is another example of how companies like IRD Duhallow can dovetail different programmes to give a more integrated and better result for funders, communities and participants. Our supervisors are working as a team under the guidance and management of Triona Murphy and the Social Economy Working Group through which Tús, RSS and CE report to the Board. I want to acknowledge the support of the Department of Social Protection, Colette Vaughan and her staff in Newmarket and also the support of Case Officer Martina O'Connor and Lorraine O'Connell of CE.



This year saw IRD Duhallow successful in its tender to SEAI for the Warmer Homes Scheme. It is delivered as part of our community services brief led by Helen O'Sullivan and managed by Colm Crowley. Our team of installers carry out their work to the highest standards. We also have engaged Cúnamh Energy in Tralee to facilitate work in Kerry. We expect to insulate and ventilate 200 homes, in addition to 7 community facilities.

Our pared back Social Inclusion Community Activation Programme (SICAP) for the Duhallow regions of Cork and Kerry was granted in April. I want to thank Niall Healy and Mike Scannell of Cork and Kerry LCDC's for easing the process as much as possible and Clodagh McDonnell Principal Officer along with Assistant Secretary Mary Hurley in the Department of Environment Community and Local

Government for their support and guidance.

I have been fortunate to work with a dedicated Board under the solid stewardship of our Chairman Cormac Collins. His cool, clear-headed, well thought out and measured inputs; giving space to Board, Working Groups and Staff to yield solid decision making has served this company very well. Indeed, under his leadership, for the first time since its inception, IRD Duhallow has achieved gender balance on its Board, a result of years of the gender equality work we have undertaken. He has enabled a strategic positioning of the company that I have no doubt will stand the test of time. Moreover, he has secured a unity of purpose from Board and Staff alike, which is a fine legacy at the end of his term as Chairman. I am delighted that he will continue to serve as a Board member.

I am grateful to our outgoing board members, in particular Michael Doyle who has served the company since its inception in 1989. Along with all the staff I will remember with fondness the late great Noel Dillon R.I.P.; a powerhouse of a man who had vision backed with action. I look forward to working with our new board members some of whom I already know from their great community work.

I am indebted to my Assistant CEO Eileen Linehan, who has in the past year expanded her brief and taken on difficult aspects of our work and once again delivered on target and within budget and to an impressive standard. Along with Helen O'Sullivan, Triona Murphy, Margaret O'Connor, Kasia Meller, Marie Fleming, Derval Corbett and Development Officers Mary Creedon, Katie Crowley and Louise Bourke, they have given me the space to prioritise major projects and work with stakeholders to arrive at the best possible solution for IRD Duhallow for the next programming period.

I want to thank all members of the IRD Duhallow staff, those that lead administrative, development and work placement teams and those that work on those teams. Your contribution to the region is immense and well recognised. Thanks to Louise Bourke for bringing together all the strands to complete this report.

I want to acknowledge the substantial voluntary contribution of our Board members and those that chair and serve on our working groups, in particular our Vice-Chair Anne Maria Bourke. Thanks also to those who sit on Local Community Development Committees on a voluntary basis and those who give of their time and expertise freely in order to make Duhallow a better place for everyone. This report is a testament to your work.

**Maura Walsh**  
CEO IRD DUHALLOW



## IRD Duhallow Board Members

### Cormac Collins

Cormac was appointed Chairman of IRD Duhallow in 2012. He is the ESB Networks Area Manager, and was appointed to the Board to represent the State sector having previously served as Community Representative for Western Duhallow. The ESB has worked closely with IRD Duhallow in delivering three phase electricity to many small industries in rural Duhallow and has also supported the Warmer Home Scheme since the beginning. He is chair of Gneeveguilla Community Council. He serves on the HR, Finance and Community Development Working Groups.



### Anne Maria Bourke

Anne Maria Bourke is the Board's Vice Chairperson and Chair of the Finance Committee, representing the Irish National Teacher Organisation. Anne Maria is the Principal of Liscarroll N.S which offers special classes for children with autism. She is an active member of the union being the current secretary of the District 16 Branch of the I.N.T.O. Principal's forum and a member of Cork I.P.P.N. (Irish Primary Principal Network). In addition, she is Chairperson of Allianz Sciath na Scoil North Cork Primary Schools' Game. She is a keen bridge player and is a member of both Brogeen and Kanturk Bridge Clubs.



### Breeda Moynihan Cronin

Breeda re-joined the Board in 2014 to represent Social Enterprises. Breeda was a member of Dáil Éireann from 1992 – 2007 and a member of Kerry Co. Council from 1999 - 2003 and from 2011 - 2013. Serving her community for over 20 years, her constituency included the East Kerry area, so Breeda is very familiar with Duhallow. At present she is chair of ECSSA (Electrical Contractors Safety Standards Association) Ireland and is involved in a number of voluntary and charitable organisations. Breeda is Chair of the Social Economy Working Group of IRD Duhallow.



### Michael Twohig

Michael is a founder member of IRD Duhallow and served as Chairman from 2011-2013, he also in the past served as Finance Director of the company. He represents Kanturk Chamber of Commerce on the Board. With his wife Noreen he manages the family owned Supervalu Stores in Kanturk, Abbeyfeale and Askeaton, supporting local employment. A keen angler and hunter he has developed a number of angling projects in Duhallow. Michael is an active member of the Enterprise Working Group, Finance and Audit Working Group and HR Committee. He also sits on the Life + Steering Committee.



### John Linehan

John, a full time Dairy Farmer from Dromtariffe was elected on to the Board in July 2009 as a representative of the farming sector. John and his wife, Angela, have 3 children. John is an active member of the Dromtariffe community. He has recently completed a degree in Rural Development and is a dynamic member of the Dromtariffe and Duhallow Irish Farmers Association. John is the Rural Development delegate for Cork Central IFA, as well as being the Chairman of IRD Duhallow's Agriculture Working Group and the Duhallow Skillnet. John is a member of the Focal Farmer Programme.



### Eimear Guiney

A new appointment to the board in 2015, Eimear is a 24 year old primary school teacher, teaching in Liscarroll N.S. A Newmarket native, she is nominated to the board representing Macra na Feirme, and she is a long standing member of the Freemount Club. Heavily involved in the community, Eimear is on the management committee of Bruach na Carraige, Rockchapel and is a member of Ceoltoiri Sliabh Luachra. She is an active member of Banteer Drama group. Eimear has previously been a Board member of Newmarket Credit Union.



### Inspector Aileen Magner

Aileen joined the Board in July 2015. Since the recent amalgamation of Garda Districts, Aileen is now the district Inspector for Mallow District, which incorporates Kanturk, Newmarket and their environs. Aileen is based in Mallow Station. She is a native of Kilfinane in Co. Limerick and has worked as a Garda, Sergeant and now Inspector in Mallow District and is very familiar with the Duhallow area. Aileen and her partner Dave, have a young daughter and are awaiting the arrival of their second child in the Autumn.



### Don Crowley

Don lives in Banteer and is former Chairman of IRD Duhallow, having held the role from 2006 until 2009. He was re-appointed to the Board in 2012 representing Cork Institute of Technology where he is Head of Department of Organisation & Professional Development. He is an active member of the Finance, Employment & Training, Youth & Education and Social Economy Working Groups. He brings experience of business and community projects as well as supporting lifelong education and training and delivering opportunities for marginalised individuals and target groups.



### Danny Healy Rae

CLlr Danny Healy-Rae joined the Board of IRD Duhallow in 2014. He is a farmer, publican and politician. He is married to Eileen and they have six children. He has been an Independent Councillor on Kerry Co. Council for eleven years and has worked diligently for his Constituents since then. Some of the issues he deals with include health, employment, roads, planning, housing, water and sewage services, agriculture and all other problems that affect people on a daily basis. He is a member of the HSE South and a member of the Roads & Transportation Committee.



### Melissa Mullane

CLlr Melissa Mullane is Councillor for the Kanturk-Mallow area. Melissa was previously a Town Councillor in Mallow Town Council. A party member of her party for over 10 years; she has experience in engaging with the public, lobbying for constituents and being at the forefront of various local campaigns. Melissa is a long term employee of Dairygold Co-operative Society and former part-time VEC Tutor on Payroll and Taxation. She sits on both the Housing and Environment Strategic policy committees in Cork County Council and is the Chair of the LTACC.



## IRD Duhallow Board Members

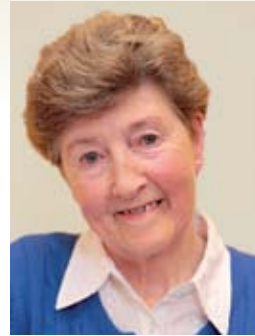
### Jack Roche

Jack is from Rockchapel and represents the Saoi Network of which he is the Chairman. He sits on the Social Economy, Finance, Human Resources and Community Development Working Groups. Jack represents IRD Duhallow on a number of forums including ILDN and was the Chairman of the LEADER anti alignment rally. Jack also represents ILDN on ELARD the European Association for Rural Development of which he is past President. He is very involved in cultural development of the region including the development of Bruach na Carraige Cultural Centre in Rockchapel, the Sliabh Luachra Archive and the Sliabh Luachra Cultural Trail.



### Judy O'Leary

Judy first joined the Board of IRD Duhallow in 1997 representing women's groups. She Chairs the Women and Childcare Working Group and is a member of the HR Working Group. Judy is a founder member of the Duhallow Women's Forum. She hails from Dromtariffe and is actively involved in her local community. She is a long standing member of the Irish Country Women's Association and is the Vice President for the North Cork Guild and Secretary for the Dromtariffe Guild. She has also served as Vice Chairperson of IRD Duhallow for three years.



### Mary Wallace

Mary originally hails from Béal na Bláth, but is living in Donoughmore for 26 years. She was elected to the Board in 2015 representing the South Eastern Region. She is married to Vincent, has 2 children and works in the Department of Social Protection. She has served on the Boards of Managements of St. Lachteen's N.S. and Coachford Community College. She has been involved in fundraising events with Donoughmore Community Council including the annual carnival. She is currently Treasurer for the Community Council and the Community Alert Group. She co-ordinates the text alert scheme for the area.



### Noreen Duggan

Noreen is a native of Banteer and was elected to the Board of IRD Duhallow to represent the South Eastern Duhallow region. Having completed a BSc and a Higher Diploma in Education in UCC, Noreen developed an interest in primary education and received her primary teaching qualification from Mary Immaculate College, Limerick. Noreen is currently the Principal of Scoil Fhursa, Lyre. She volunteers with many community groups in Banteer including Banteer Community Centre and Annual Show Committee, the Glen Theatre Banteer, and currently holds the position of Chairperson of Banteer/Lyre and Districts Community Council.



### Batt Casey

Batt was elected to the Board of IRD Duhallow in June 2014 representing the Western Duhallow region. He is an active member of the Kiskeam community and volunteers with many community and voluntary groups. He is the current chairperson of Kiskeam's Development Association, and a member of Kiskeam Social Action Group, the Graveyard Committee and also of Boherbue/Kiskeam St. Vincent de Paul Society of which he is a founding member. He is also a Board member of Newmarket Co-op. A full time farmer by profession, Batt is married to Joan and they have seven children.



### Brian Kelly

Brian was elected to the Board to represent the Western Duhallow region in June 2014. He has over 30 years experience in the trade industry and worked as an electrical contractor and is a founding member and former director of ECSSA, a body set to regulate the electrical industry. Along with his wife Anna he runs two subway restaurants in Cork and Ballincollig, and served on the advertising Board for Subway Ireland. He is an active member of Rathmore Community Council and was instrumental in bringing the playground and the linear lighting to Rathmore.



### John Cott

John was elected to the Board of IRD Duhallow to represent the North Eastern Community Forum. He is a beef farmer from Cecilstown in the parish of Castlemagner. He is a long time member of Castlemagner GAA Club, and is also involved with the Ladies Football Club, the Hall Committee and Lohort / Cecilstown Development Association. He is the current Chairman of Kanturk Mart and is also a Board member of ICOS, the National Network of Co-operatives. John is married to Una and they have three children. John sits on the Saoi Network and the Agriculture Working Group.



### Deirdre Green

Deirdre is from Freemount and was elected to the Board of IRD Duhallow to represent North Eastern Duhallow. She holds a Bachelor Degree in Business from CIT and a Higher Diploma in Education from UL. She is married to Danny and they have one daughter. Deirdre works as an accountant in Mallow. She is deeply involved in the development of her local community and is a founding member of Freemount Badminton Club and currently Joint Treasurer of Freemount Community Development Association. Deirdre sits on our Community Development Working Group and is Vice Chair of the Women's Forum.



### Suzanne Champion

Suzanne represents Inland Fisheries Ireland where she is Head of Business Development and is their nominated representative to the Southern and Eastern Regional Assembly and the Border Midland and West Regional Assembly. Suzanne has worked as a manager and accountant in the public and private sectors with experience in the agri-food industry. As head of Business Development with IFI, her focus is on developing the business of angling and has recently published the National Angling Development Plan. Suzanne plays a pivotal role in the partnership between IRD Duhallow and IFI who are our partners in the EU Life+ Programme.



### David Doyle

David Doyle joined the Board of IRD Duhallow in July 2015, as a nominee of the Chief Executive of Kerry County Council, Moira Murrell. David holds the position of Senior Engineer in the Operations & Safety section of Kerry County Council. He previously worked in Killarney as a Town Engineer. He and his staff in the Municipal Districts, support and work with local development groups and tidy town organisations.





## IRD Duhallow CLG. Company Structure

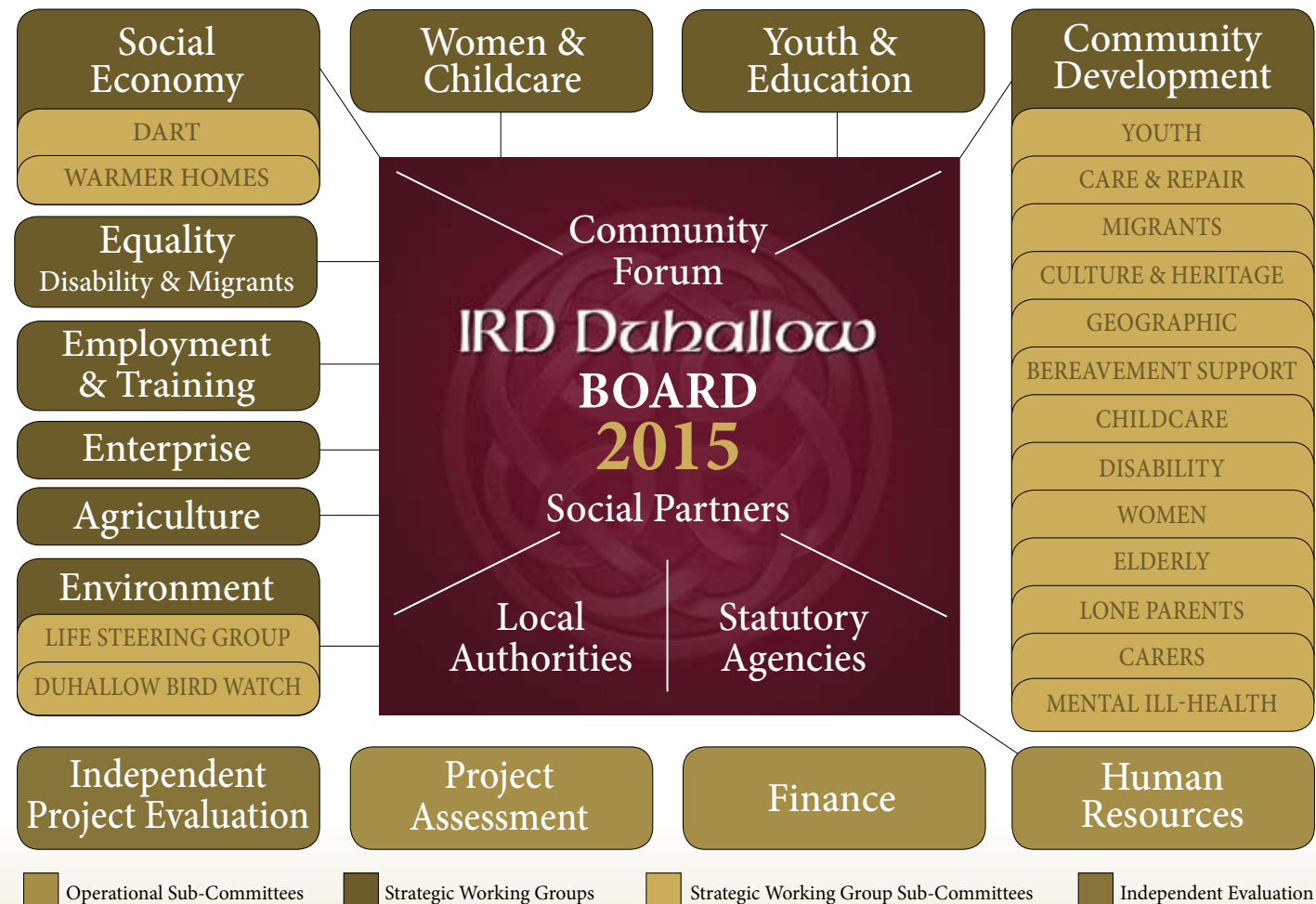
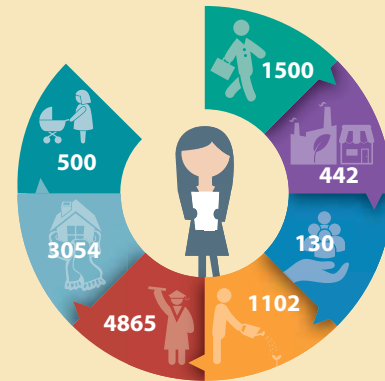
IRD Duhallow is a Community based Rural Development Company established in 1989. It is a company limited by guarantee without share capital. It has charitable status and our directors are voluntary and receive no remuneration for their contribution. The Board of IRD Duhallow adopted the Governance Code Principles Statement in 2013 and is listed on the Register of Compliance. The Memorandum and Articles of Association reflect best practice and are in accordance with the Charities Act, 2011.

The Board membership reflects the integration of Social Inclusion and Rural Development, the importance of the environment and community volunteers and the democratically elected Local Authority Members. Reflective of the integrated nature of our work, the Company's Board and Sub Committee Structures have evolved over the years and enjoy a massive amount of good will and voluntary contribution in the region. Upwards of 3,500 people participate from the bottom up through these structures. IRD Duhallow has a number of working groups with representatives from our Board and staff as well as community and State sector representatives. This structure allows us to target specific expertise beneficial to the implementation of the strategic aims assigned to the particular working group.

IRD Duhallow continues to strive for excellence through the ongoing training and development of our staff. We have maintained the Excellence Through People Standard, Ireland's standard for Human Resource Management which is now administered by the National Standards Authority of Ireland.

### WHAT WE HAVE ACHIEVED SINCE 1989:

1500	Jobs Created
442	Businesses Supported
130	Community Groups Supported
1102	Community Work Placements Supported
2865	People Trained
3054	Homes Insulated
500	Childcare Places Created



## Details of Staff



**EILEEN LINEHAN**, B.A. (Econ & Geog), MBS (Business Economics), Dip. Personnel Mng. Dip in Public Procurement EU funded projects

Eileen is the Assistant Manager with responsibility for the Enterprise team which includes the Raptor Life programme. She has responsibility for the SICAP & LEADER Programmes. She supports the Manager in the day to day running of the company including Human Resources, prepares the Programme of Activities and oversees the financial operations of a number of programmes. Eileen monitors programmes through the IRIS & LEADER systems and represents Community Partnerships on the Cork County Childcare Committee, which she currently Chairs, Pobal's Pension Board and Cork North and East Citizens Information Service.



**HELEN O'SULLIVAN**, .Soc.Sc., M.Soc.Sc, Dip Com, Leadership & Mgt, Cert in Agri

With over 10 years experience in both Community Development and Enterprise. Helen is the Community Services Team Leader with responsibility for the Warmer Homes Scheme, Duhallow Community Laundry and Newmarket Afterschools. Helen is the designated Child Protection Officer for the company. Helen works closely with community, youth and voluntary groups in South and North Eastern Duhallow to improve their communities through the LEADER and SICAP programmes. She is also the co-ordinator of the IRD Duhallow Bereavement Support and Domestic Violence Helpline.



**MARGARET O'CONNOR**, MAAT Accounting Technician, AIPA – Payroll Technician

Margaret is the Senior Accounts Administrator and has been employed by IRD Duhallow for eighteen years. She is responsible for the establishment and maintenance of the company's financial systems and procedures and the implementation of the apportionment of overheads across the various programmes delivered including LEADER and SICAP. She is responsible for preparation of annual budgets and monitors them on a monthly basis. She also oversees the Payroll and Pension administration and prepares Financial Reports for Management and the Board of Directors each month.



**MARY CREEDON**, B.B.S., Postgraduate Dip in Rural Dev, Food Mktg and Co-operative Studies. Cert in Community Dev. IMCV Professional Manager Award

Mary joined IRD Duhallow in 2006 as the Development Officer with responsibility for Equality, Employment and Training. She promotes lifelong learning coordinating LEADER and SICAP projects, and works directly with the unemployed through the Job Centre. She coordinates the Equality for Women Measure, Benefit I.T. training and Integration of New Communities. Mary is staff resource for the Duhallow Women's Forum, the Employment and Training and Equality Working Groups and is Chairperson of the IRD Duhallow Health and Safety Committee.



**MARIE FLEMING**, BSc Rural Development, Certificate in Health & Safety in the Workplace

Marie joined the team at IRD Duhallow in May 2006, and as Clerical Officer she provides administration support to the Development Officers and supports the Manager's participation on a number of National and European fora. Marie co-ordinates the monthly board pack and provides the administrative support for staff training and development and is secretary of the Health and Safety Committee. Marie graduated from UCC last October with a Degree in Rural Development after completing a four year course through distance learning.



**KIERAN MURPHY**, BSc in Wildlife Biology

Kieran joined IRD Duhallow in June 2012 as Project Scientist for the LIFE Programme. He is responsible for the monitoring and improvement of the habitat and wildlife in the Upper Blackwater catchment area through the DuhallowLIFE and RaptorLIFE Projects. Kieran liaises with many of the project stakeholders and oversees much of the on-the-ground actions. He is responsible for project monitoring through mapping using GIS. He also delivers educational lectures to the schools of Duhallow, and the general public, on the LIFE Project and the development of a sustainable environment.



**JULIE O'FLAHERTY**, Bachelor of Business Studies & Marketing /Finance

Julie joined IRD Duhallow in March 2015. Her previous employment was as Credit Analyst for Morgan McKinley recruitment agency. Julie has been appointed to the Finance department of IRD Duhallow and her primary responsibilities are in relation to the management of accounts for the company. This entails revenue returns, banking reports, salaries /wages and reconciliation of supplier payments. Julie also conducts Financial Reports, Trading accounts & Balance Sheets, which she presents to the Finance and Social Economy Working Groups on a monthly basis.



**TRIONA MURPHY**, MBS Cooperative and Social Enterprise, B.Sc Public Health & Health Promotion, IMCV Professional Manager Award

Triona joined IRD Duhallow in 2007 and is Community Development & Employment Team Leader. Triona oversees the operations of 3 Rural Social Schemes, 8 Tús Schemes, Duhallow REVAMP and the Employment, Training and Equality Briefs. She works with communities in Western Duhallow assisting them to develop through the various funding streams including LEADER and SICAP. Triona supports the work of both the Community and Youth and Education Working Groups and is coordinator of the Towards Occupation Programme.



**DR. FRAN IGEOE**, PHD in Zoology, BSc Science

Fran is the lead Project Scientist working on our two EU LIFE projects aimed at the conservation of a range of EU important species that Duhallow is internationally recognised for, as well as the preservation of their habitats. He is also working on Integrated Catchment Management and the promotion of a process that could result in the payment for farmers for the provision of ecosystem services. As part of the Enterprise Team, Fran reports to the Assistant Manager, Environment Working Group and Life Steering Committee.



**KATIE CROWLEY**, B.B.S. Postgraduate Dip in Rural Dev, Food Mkt & Co-ops, Cert in Agri, IMCV Professional Manager Award

Katie joined the Enterprise Team of IRD Duhallow in 2007 and works across the SICAP and LEADER Programmes. She is responsible for the Diversification measure of LEADER, the Focal Farmer Programme, Duhallow Bird Watch Group and Duhallow's GY Group and the Duhallow Beekeeper Association. She assists individuals with LEADER and SICAP grant applications and is also the staff resource to the Agriculture and Environment Working Groups, focusing on and promoting sustainable intensification of agriculture and conservation of the environment.



**LOUISE BOURKE**, B.C.L., Masters in Criminal Justice., Masters in Management, Cert in Agri., IMCV Professional Manager Award

Louise joined the IRD Duhallow Enterprise team in November 2010, as the Enterprise and Tourism Development Officer, coordinating LEADER and SICAP project applications, as well as providing targeted supports to develop start up and existing micro enterprises. She is the appointed staff liaison for the Enterprise Working Group, Business Mentoring Programme, IRD Duhallow Skillnet, the Duhallow Carers Group, the Lone Parents group, the Saoi Network, Duhallow Hill Walkers, Duhallow Boxing Club and the Literacy Support Programme.



**DERVAL CORBETT**, ECCL, Cert in Supervisory Management

Derval has been employed by IRD Duhallow as a clerical officer for 16 years. She is based in the Reception and Administration Office. She deals with general enquiries and administration and supports the manager in participation on a number of National Networks. Derval is editor of the company's monthly Newsletter which is circulated to 10,000 homes in Duhallow. She is responsible for the company's stationery requirements and oversees the company's IT systems. Derval is the Authorised Signatory for the processing of Garda Vetting Applications for LEADER Partnerships.



**KASIA MELLER**, MA in Political Science, IPASS Payroll Technician, Accounting Technician

Kasia was appointed Accounts Officer in March 2007. In January 2008, Kasia took over as Finance Officer on the Community Development Team. She is responsible for the preparation of weekly and monthly accounts for RSS, Tús, Out of school, Walks, Warmer Homes, and prepares quarterly reports to Pobal. Kasia also processes the Out of school and Warmer Homes wages on a weekly basis and she prepares financial reports for the Social Economy and Finance meetings and the reports for the Main Board.



**LAURA CORCORAN**, BB in Event Management with Public Relations, BBS (Business Management)

Laura joined IRD Duhallow in 2010 and has built up experience by undertaking tasks and projects within the company and carrying out various administration duties during the summer periods. Laura now works full time in the Front Office supporting the team in administration responsibilities, and supports the other staff in the organisation. She is also responsible for the co-ordination of various events for IRD Duhallow, and assists with Community events throughout the region such as the Duhallow Cycling Sportive.



## LIFE + SAMOK

The IRD Duhallow LIFE+ programme has been an innovative project carried out over the course of the last four and a half years, initiating a conservation and restoration strategy for many endangered fish, mammals and birds found in the Munster Blackwater River Special Area of Conservation, which included farmland and instream works along the Allow River. Co-financed by the EU Commission and the Irish exchequer, this €1.9m project is run in partnership with Inland Fisheries Ireland. Key project on-the-ground actions are aimed at improving and protecting animal species of European importance; European otter, Kingfisher, Atlantic salmon and Freshwater Pearl Mussel found in the Upper River Blackwater (A Special Area of Conservation (SAC) under the EU Habitats Directive).

The great weather we enjoyed in 2014 meant a lot of progress was made in many areas of the project. The LIFE Project has kept on working with landowners, State organisations, angling clubs and the public, to advance important on-the-ground works.

### Working on the farm; for the agri-environment

River bank erosion is a major issue along rivers in the Upper Blackwater. Bare, unprotected banks are at risk of being washed away. The disturbed silt, and sediments affect the spawning beds of Atlantic salmon, and excess bank erosion can lead to loss of land for farmers. To address this, many project actions are aimed at restoring and protecting riverbanks along farmland.



RSS and Tús participants planting tree saplings that were donated by local landowners.



Andrew Gillespie of Inland Fisheries Ireland supervising pupils from Knockaclaig NS doing kick samples for invertebrates living under the rocks in the Allow River.



Project volunteer, Joanne O'Keeffe, graduate in MSc in Ecological Assessments inspecting an old dipper nest.



Rock was placed to help protect the base of a riverbank on the Dalua River. This bank was re-profiled to help ease pressure from floods. Silt and suspended solids in the water caused by the works were kept from entering the main channel by a silt curtain.

Native plants and trees are vital for the added protection of river banks. Rural Social Scheme and Tús participants were key to the LIFE Project, helping with the planting of over 4000 trees along nearly 6.5km of river.

The Project has worked with landowners to help manage cows along riverbanks and more than 35km of waterway bank has been fenced along the Allow and Dalua Rivers. This delivers advantages to both the landowner and the environment. Along with the large-scale fencing scheme, direct dairy cattle access to the river has been replaced with alternative drinking water sources. This strategy replaces traditional cattle drinking methods rather than creating new ones, which would require planning permission. The types of alternative drinking sources that have been provided by the LIFE Project include pasture (nose) pumps, rainwater harvesting and solar powered pump troughs.

We have also continued to work with the landowners and our RSS participants in improving the system of silt trapping to reduce the siltation of riverbeds. This will greatly benefit Atlantic salmon and Freshwater Pearl Mussels.

### River Allow Catchment Management Group

This group initiative aims to improve river management on the Blackwater River by first concentrating on the River Allow catchment where a model of management that involves all of the key interest groups can be developed. The aim is to find common ground and share resources in attempts to improve water quality for everybody's benefit. The group meets every 6 weeks and each meeting focuses on a specific topic. Queries that are raised at a meeting are addressed on an ongoing basis and other relevant issues will be highlighted and addressed as the meetings and group evolve.



Unveiling of the wildlife information sign in Greenane Park, attended by members of Kanturk Tidy Towns, Kanturk Angling Club and the DuhallowLIFE project.



RSS participants, Davie Joe Breen and Joe Sexton installing a pasture pump along the Allow River. Cattle that once entered the river to access water, now use their noses to pump water for drinking.



Silt being removed from one of the innovative silt traps that were installed in many drains and streams that flow into the Allow River.

## LIFE + SAMOK

### Himalayan Balsam

Thanks to the dedicated work from our Rural Social Scheme and Tús participants, enthusiastic volunteers and diligent local anglers, the alien invasive plant Himalayan balsam has been tackled along 35km of riverbank. Originating in the Himalayas it was planted as an ornamental flower in many gardens around Ireland. Indeed, when it was owned by the Aldworth family the grounds of the James O'Keeffe Institute in Newmarket were once planted with Himalayan balsam. While the plant has been nearly eradicated from the Allow catchment area, continued monitoring of the riverbanks will be needed as seeds from the flower can still grow after two years in the soil.

### Freshwater Pearl Mussel

Since surveying began in 2013 over 28km of riverbed has been surveyed for freshwater pearl mussel. These surveys have to be conducted under licence and by snorkelers who have been trained by experts approved by the National Parks and Wildlife Service. Along with recording and mapping of each individual mussel, river conditions (substrate, vegetation, water depth etc.) have also been noted. 12,895 individual mussels have been counted to date.



'Guess the age of the pearl mussel' winner Rachel Walsh, picking up her prizes from Maura Walsh and Kieran Murphy at last year's National Ploughing Championships.

### End of Project Conference

A conference marking the end of the LIFE project took place on the 21st of May this year. The conference was chaired by Radio Kerry's Frank Lewis. Speakers came from near and far, as did attendees. IRD Duhallow CEO Maura Walsh welcomed everybody and outlined the role of IRD Duhallow in nature conservation and how the protection of our environment is vital to sustainable communities in Rural Ireland. The Keynote address was given by John Lucey, Freshwater Pearl Mussel Expert, Author and Historian - The Freshwater Pearl Mussel: Pearl Producer and Protected Species. He gave a fascinating account of the historic importance of Pearl Mussels in Ireland and how crucial it is to protect these endangered species. Dr Fran Iggoe outlined the Duhallow project and gave examples of measures that were developed to assist farmers and conservationists throughout the duration of the project. Kieran Murphy provided an overview of how the project team carried out conservation actions to assist Otters, Kingfishers and Dippers and also gave a comprehensive overview of the invasive plant species removal works. Nuala Riordan presented the public engagement and education elements of the project.



Eileen Linehan, IRD Duhallow Assistant Manager, making a presentation to LIFE conference keynote speaker, author, historian and Freshwater Pearl Mussel expert John Lucey, with Dr. Fran Iggoe, Project Scientist and Board Member, Michael Twohig.



Declan Little, Woodlands of Ireland; Paddy Linehan, LIFE project volunteer; and Dr Fran Iggoe, IRD Duhallow LIFE Project; leading the way on a fieldtrip to view project works on the Dalua River.

Speakers from other EU LIFE projects included Marjana Hönigsfeld, Institute for Conservation of Natural Heritage, Slovenia, who spoke on 'Otter conservation in Slovenia and Diane O'Leary from the Pearls in Peril LIFE+ UK, presented on Freshwater Pearl Mussel conservation efforts in the UK. Ruairi O'Conchúir, Inland Fisheries Ireland, gave a riveting presentation on the work carried out for the MulkearLIFE project.

Stakeholder involvement was also an important part of the conference with presentations from Michael Twohig (Kanturk and District Trout Angling Club), Derval Vaughan (Kanturk Convent National School), Brigid Daly (Landowner), Dr Donal Daly (EPA) and Frank Donoghue (NPWS).

It was a highly successful, interesting and informative day. With over 150 people in attendance it was clear that everyone is keen to make a difference in conserving our environment.

The conference concluded with a Conference Banquet, catered by Duhallow Community Food Service, followed by entertainment by 'Comhaltas Ceoltoiri Sliabh Luachra'. It was a great end to an impressive day.

### After LIFE plan

Under the regulations set out by the EU LIFE Programme the DuhallowLIFE Project will commit to maintaining the project actions delivered for a further 5 years after the project ended in June 2015. This is seen as an opportunity to build on the project's successes. The main objectives are to ensure the maintenance of the measures delivered, between 2010 and 2015, and the continued input from the Allow River Integrated Catchment Management Group, which involves many relevant stakeholders.

Rural Social Scheme participants will be on hand to tackle heavy infestations of Himalayan Balsam along the Allow, Dalua, Brogeen Rivers and Rampart Stream. An eradication programme will be put in place to systematically tackle all four channels. Kanturk and District Trout Angling Club has given their commitment to remove the tall invasive flower along the Allow River. Volunteers and students will also be deployed to monitor native plant regeneration.



Tús and RSS participants PJ Coleman, Nuala Riordan, and Sheila Fehin collecting sediment samples from the Dalua River



As part of her work experience placement, Shelley O'Hanlon, Geography and Maths Undergraduate in Mary Immaculate College, monitored the 28 log piles that were constructed for Otters in the Allow River catchment area.



## RaptorLIFE

IRD Duhallow successfully secured its second EU LIFE+ Nature Project in 2014, which commenced last February. The first LAG in Ireland to access LIFE+ funding, our successes demonstrate that the Rural Development Company model is suitable for large-scale nature conservation projects. This €3million LIFE+ project is a 4.5 year project and aims to work with the local community to achieve a better environment for everyone in Duhallow. The RaptorLIFE Project was officially launched at a conference in May of this year. The event was chaired by Paddy Woodworth of the Irish Times. Guest speakers included representatives from the project's many stakeholders including Coillte, Cork Nature Network, the Golden Eagle Trust and NPWS.



Eileen Linehan, Assistant Manager of IRD Duhallow, presenting an overview of the new LIFE Project at the official launch of RaptorLIFE. Paddy Woodworth of the Irish Times chaired proceedings on the day.



Hen Harriers are one of the target species for RaptorLIFE. The Hen Harrier is one of Ireland and Europe's rarest birds of prey. As a result, it is a protected species under Irish and European law. (Picture by Dr Barry O'Donoghue).

### "Connecting and restoring habitats for Hen harrier, Merlin, Atlantic salmon and Brook lamprey in Duhallow, Ireland"

Our project is innovative in a number of respects not least in that it aims to join up the conservation efforts of two important EU designated sites (Blackwater Special Area of Conservation (SAC) and the Stack's to Mullaghareirk Mountains, West Limerick hills and Mount Nagle Special Protection Area (SPA)). This is the first time that the conservation of two Natura 2000 sites (SPA and SAC) has been integrated in this way. Raptors are birds of prey and Duhallow is one of the most important areas in Ireland for these iconic and threatened birds. Hen harrier in particular has seriously declined due to loss of habitat and persecution. An 85% decline has been recorded in Duhallow in recent years. One of the aims of RaptorLIFE is to explore the positive aspects of these birds by working with the local community and relevant stakeholders to promote their conservation through better public awareness and habitat restoration. The Merlin is Ireland's smallest bird of prey and little is known about the species. The project aims to find out more about Merlin in Duhallow and to promote their habitat.



Presentation made to Ms. Marjana Hönlgsfeld Adamič (LUTRA, Institute for Conservation of Natural Heritage, Slovenia) by Michael Doyle, Environment Working Group Chair, Dr. Fran Igoe, RaptorLIFE Project scientist and IRD Duhallow CEO Maura Walsh.



Tony Nagle and Alan Mee of the Irish Raptor Study Group give advice to Dr. Fran Igoe and a host of volunteers on surveying techniques for Hen Harriers in the Mullaghareirk Mountains.

### Stakeholder Engagement

The project has many aspects and stakeholders' inputs are always welcome and indeed vital in the success of the project. A corridor will be opened along the upper reaches of the Blackwater to provide nesting and foraging habitat for Hen harrier and Merlin. Coillte and the Forestry Service will lend advice and expertise in this regard. Along with riverbank invasive species removal (Himalayan balsam and Japanese knotweed) roadside invasives will also be tackled with the welcome input and help from both Kerry and Cork County Councils and the Cork Nature Network. The Golden Eagle Trust, BirdWatch Ireland, Duhallow Birdwatch Group, Volunteers and of course our own Environment Working Group, will all contribute to surveying and monitoring Hen harrier and Merlin and their habitat.



Volunteers Thomas Ankettell, Anne Buckley and Paddy Linehan join Nuala Riordan (RSS participant on RaptorLIFE) preparing for a Meadow Pipit survey at the source of the River Blackwater.

### Surveying and Monitoring

It is essential that the target project species and their potential prey are monitored throughout the project and compared as the project progresses to a baseline standard established at the beginning, so that project actions can be measured. The continued monitoring throughout the project will allow the documentation of benefits of the key project actions for the target species. The Golden Eagle Trust and BirdWatch Ireland will be vital stakeholders in this regard, lending their extensive expertise to the task.

### Species Recording

Having proved hugely popular in the SAMOK LIFE project, the "Species Recording Programme" or "Nature Detective Programme" is now underway in the national schools in Duhallow, as a part of Raptor LIFE. This programme encourages school children to take an active part in the recording of wildlife in their locality which is then put onto an online map. With the assistance of Mary Immaculate College (UL) we are analysing the trends from the nature recordings collected by the children to date and have discovered some interesting facts. You can view our online Wildlife Species Recording map at [www.duhallowLIFE.com](http://www.duhallowLIFE.com)



Pupils from Dromagh NS with a stuffed bird of prey during a visit from the RaptorLIFE Project



Pupils from Millstreet BNS feeling the soft feathers of a female kestrel during a visit by the RaptorLIFE project.

## The EPA Project:

### 'Delivering Integrated Catchment Management Through the Bottom-up Approach: A Critical Analysis'



**Dr. Travis O'Doherty**  
PhD Urban Sustainability,  
BSc Environmental Science

This project's official title is 'Delivering Integrated Catchment Management Through the Bottom-up Approach: A Critical Analysis'. It is a joint venture between IRD Duhallow, Cork County Council and Mary Immaculate College and is funded through the EPA Research Programme 2014-2020.

This research project examines national and international experience regarding Integrated Catchment Management. The River Allow Catchment management initiative is being examined as a real-time practical example of the bottom-up approach in Ireland and to ascertain how the local community can be motivated to take ownership in water management. The River Allow is a tributary in the upper reaches of the River Blackwater, and is designated as a Special Area of Conservation. The catchment experiences a wide range of pressures typical of many Irish catchments including forestry, urban development and agriculture. The catchment has been subject to the IRD Duhallow EU LIFE Programme, which was completed in June this year.



Eileen Coleman from Cork County Council presents at the 6th River Allow Catchment Management Group Meeting.



Fran Igoe conducting a riparian survey near to the source of the River Blackwater with Cathy Fisher, Brin McDonnell, Frank McMahon and Andrew Gillespie.



Dr. Fran Igoe presents river restoration works on the Dalua to delegates of the RaptorLIFE conference.

Managing our water is essential to support life and protect our ecosystems. Integrated Catchment Management is about bringing water issues, people and organisations together at the right scale to tackle water problems and look for possible solutions which benefit all stakeholders involved.

This project aims to develop a bottom-up model for a logical management plan which will integrate environment, economic and social issues from a typical region in Ireland. Behaviours are informed and communities are empowered through local action, in which the community develops an agreed vision of sustainable land and water use for their catchment. Co-ordinated management of water, land and related resources are promoted from the bottom-up, therefore maximising benefits to the community. It is a targeted approach to catchment management and is a long term process, in which each step incrementally builds upon the next.



Kieran Murphy introduces river remediation works to students from Clonakilty Agricultural College.

Interviews are being conducted with programme managers and key stakeholders both nationally and internationally to establish what has worked but also what hasn't worked. The research will analyse if the approach can improve the interface between the land use planning system, water services delivery and Water Framework Directive implementation. In this regard international good practice examples such as the U.K's 'Upstream Thinking' model will be analysed. As part of this study gaps, barriers and constraints to the effective implementation will be examined and recommendations will be made for the wider roll out of Integrated Catchment Management programmes in Ireland.



Dr. Fran Igoe chairing the 5th meeting of the River Allow Catchment Management Group.

A stakeholder forum meets on a regular basis to discuss and resolve issues pertaining to the river and its management. One of the key challenges is bringing all stakeholders together in a coherent fashion and encouraging stakeholders to engage in a meaningful fashion. Linking local communities, landowners and businesses that can make things happen with regional and national plans and policies is an important part of the process. This process is being tracked for 1 year as part of an effort to more clearly understand the dynamics of a bottom-up catchment management process.



EPA Catchment Science and Management Training Course.



## Agriculture



Lisa Ring and Billy Tarrant taking part at the Ploughing Championships in Banteer. Lisa went on to participate in the farmerette section of the National Ploughing Championships.

Last year was designated as the International Year of Family Farming, and the main focus of the Agriculture Working Group was to raise the profile of family farming and smallholder farming in Duhallow. Prioritisation of the survival of Low Income Farm Families through the LCDP funded Focal Farmer Programme has been an integral part of IRD Duhallow's operations and since the introduction of the Focal Farmer Programme in 1996 we have assisted over 5000 families whose farms are under threat. However this funding is now insecure and the maximising on farm efficiency supports are in greatest jeopardy. From the 1st of April onwards the Local and Community Development Programme (LCDP) was replaced by (SICAP) the Social Inclusion Community Activation Programme. The LCDP programme continued to operate on a transitional basis until 31st March. Despite the disproportionate budget cuts of 48.5% received by IRD Duhallow for SICAP in both Cork and Kerry parts of Duhallow a comprehensive programme plan was submitted to both LCDC's before Christmas in order to meet the tender deadline. However, the inclusion of Low Income Farm Families through maximising on farm efficiency grants is something that has had to be regrettably cut. This will be a huge loss to the small holding farmers who received small grants towards AI, Soil Sampling and Milk Recording.



Officers of the Agriculture Working Group meets regularly to identify current issues and put in place solutions to support the development of local farmers and farm families.

Through the now complete LCDP Programme, the Working Group delivered a wide range of supports to Low Income Farmers. 80 farmers received a total of €17,600 for AI, Milk Recording, and Soil Sampling. Other supports include: ongoing support to the Rural Social Scheme participants, One to One supports to 25 low income farm families, assistance to 15 families with Farm Assist Applications, further development of Duhallow Bee Keepers, expansion of the Grow it Yourself Duhallow Group, Support for Women in Agriculture, development of a River Allow Catchment Management Group, in the Allow Catchment area, focusing on fencing, drainage and slurry storage and information Seminars and Workshops focusing specifically on low income farm families.

### Tackling Farm Safety

According to the Health and Safety Authority farming is the most dangerous occupation in Ireland. From 2004-2013 a total of 176 people lost their lives on farms and unfortunately 2014 saw the highest number of deaths on farms in decades with 30 fatalities on Ireland's farms, including three children under the age of 16 and nine people over 65. Tractors and Machinery consistently account for over 50% of deaths on farms, and being crushed by or under a vehicle is the number one individual cause. For this reason we organised a training course targeting

14-16 year olds entitled "Safe Tractor Driving Skills for Teenagers." The main focus of this course was to teach teenagers how to operate and drive tractors safely, with practical instruction being a key component of the training. FRS tutors Noel Fitzgibbon and Val O'Connor delivered both the theory and practical elements of the course, Kanturk Mart provided the training facilities and local Agricultural Contractor Eamonn Tarrant very kindly gave us a loan of his tractor and dumper which helped the 30 teenagers to successfully complete the practical element of the course.



Denis Murphy and Johnny Lane deliberating whether or not to put in a bid at the clearance sale in Kanturk Mart.



A familiar sight during the summer in Duhallow, as farmers try to make the most of the good weather.

### Up-skilling and Information Seminars

Up to 40,000 farmers across the country will be affected by a raft of new regulations governing all aspects of pesticide use to be implemented as part of the Sustainable Use Directive by November 2015. The European rule also dictates that where sprayers are found to be sub-standard, they must be either decommissioned or repaired to the required standard. Farmers are required to undergo detailed training in the handling, application and storage of sprays under the rules. The Agriculture Working Group together with HCT Training organised a three day Boom Sprayer FETAC Level 5 training course last October, which was completed by 10 farmers. We also organised a FETAC Level 5 three day, Hand Held Pesticide Training for 18 farmers who are using knap sack sprayers on a regular basis. This course ran in March. The ultimate aims of this new directive is to prevent pesticides being released into the environment and protect the health of those who are working with pesticides on a regular basis.



Gerald Burns, proudly presenting the rare triplets (two bulls and a heifer) that were born at Andrahan Farm in March.

## Agriculture



The Agriculture Working Group organised a trip to Dairymaster for local farmers to see the latest technology and upcoming trends in the farming world.

To mark the International Year of Family Farming the Working Group organised two very successful Educational Field Trips. The first was to 'The Farm,' Grenagh, last September and the second to the Dairymaster plant in Co Kerry. Dairymaster is a world leader in dairy equipment manufacturing and operates from its head office in Causeway, as well as having operations in over 40 countries worldwide. This trip was of particular interest to Dairy Farmers. The second trip was to the "Farm Grenagh," which is the brain child of Michael Forde, a Donoughmore Native and member of the IRD Duhallow Enterprise Working Group. Thirty farmers from Duhallow immersed themselves in Ireland's history as they walked through the forge, hardware shop, old and modern farmhouse, milking parlour, garage and more. Vintage enthusiasts browsed the Ferguson collection, Massey Harris and Massey Ferguson tractors, as well as other equipment and machinery from the 1930's to 1970's.



Dr. Fran Igoe discusses the proposed Locally Led Agri-environment scheme that IRD Duhallow and TRAP have developed with farmers along the River Allow with Minister of State of Agriculture, Food and Marine, Tom Hayes. This innovative scheme matches local farming needs with wildlife conservation in a new partnership approach.



Duhallow went pink this June as Farmers such as Mike Hayes (pictured here) wrapped their bales in Pink Wrap in aid of Action Breast Cancer.

The Agriculture Working Group once again teamed up with XLVETS to deliver an Information Seminar entitled "The Challenges That Lie Ahead with Dairy Expansion" Donal Murphy of Sliabh Luachra Veterinary Practice in Rathmore delivered the presentation. As the end of the EU Milk Quota regime approached on the 1st of April many dairy farmers explored the possibility to expand milk production. The Irish dairy industry has operated within an EU quota system since 1983. Expansion however is not the be-all and end-all, as poor animal health and milk quality pose problems for individual dairy farmers and potentially for the overall Irish dairy industry. Expansion of the national dairy herd could lead to increased challenges so farmers are encouraged to be realistic and grounded when making expansion decisions.



RSS Participant Nora Shine completed a FETAC Level 5 Certificate in Hand Held Pesticide Spraying. Nora puts her new qualifications to use spraying Community Green Areas such as this one in Rockchapel.



Paddy Browne, feeding his ducks while his cattle look on anxiously hoping that they are next for grub!

Twenty Eight farming Women from Duhallow braved the elements last October to attend the Irish Country Living "Women in Agriculture Conference" in the Royal County. The focus of the Conference was Family Farming, and topics discussed included: "Farming in Ireland through the Ages, Changing Roles in the Farm Family Household, Sibling Attachment to the Land, and Land Ownership in Ireland." Karl Henry from Operation Transformation provided some healthy eating tips, Margaret Farrelly of Clonarn Clover discussed and provided some useful tips on running a successful family business, MEP Marian Harkin spoke on her work in the European Parliament and Dairy farmer Con Murphy from Coachford spoke poignantly on his own person battle with depression and how he has overcome some very difficult obstacles in his life.



The Agriculture Working Group recognises the importance of the role of Women in Agriculture. Pictured here is Joanne Buckley who is a farmer running her own farm in Banteer.



## Environment

IRD Duhallow's Environment Working Group has long recognised that our environment is a unique, finite and irreplaceable asset; it is valuable both in its own right and for the health, well-being, and enjoyment of all people. The environment acts as an important strategic resource in Duhallow and is a valuable asset which must be protected and managed with care to ensure it continues to be the basis for our health, wellbeing and a sustainable economy. The management and protection of Duhallow's environment is a shared responsibility, involving communities, farmers, businesses, industry and public bodies.



Members of the GIY Group went on an outing to Coolwood Wildlife Park in Kilarney.

### Grow It Yourself

Grow It Yourself (GIY) Duhallow was launched in 2009 by Michael Kelly, founder of GIY Ireland. IRD Duhallow's group currently has forty members whose vision is for a healthier, more sustainable and more connected community where people grow much of their own food. The GIY group continues to meet once a month, with a programme of in-house talks, speakers and garden visits during the summer.



A very interesting presentation on indoor potting and plants was hosted at the Ballyseede Castle Garden Centre.

### Polytunnel

The Towards Occupation garden and polytunnels are becoming well established, producing healthy vegetables in the easy to work raised beds. The polytunnel is very productive, growing a wide range of produce. The hot bed propagator provides heat for early seedlings, and all the plants grown in both the TO garden and the kitchen garden have been raised in the polytunnel.

### Kitchen Garden

The new Kitchen Garden is beginning to fill with tasty cabbages, onions, garlic, carrots, parsnips and potatoes. The newly planted herb bed is filling up and a large fruit area has been created, containing rhubarb, strawberries, raspberries and blackcurrants.



Mark McDowell of the IHLA demonstrating the correct method of laying a hedge.

### Hedgerow workshop

Hedgerows are such an ever-present part of the Irish environment and provide an important habitat for wildlife. Since we have so little native woodland in Ireland, hedgerows are a critical substitute for habitat along forest margins. They have an extensive variety of plant and bush species, creepy crawlies, feathered creatures and well evolved creatures. In December 2014, Mark McDowell of the Irish Hedge Laying Association visited IRD Duhallow to deliver a workshop on the history of hedgerows in Ireland and the planting and laying of hedgerows.



Victor Froome gave a fascinating talk on birds to the GIY group.

### Hedgerow Recipe Book

Maximising the fresh produce readily available from our local hedgerows was the theme of the Food from Duhallow Hedgerows Booklet, which featured delicious recipes compiled by the Environment Working Group and beautifully illustrated by Tús Participant Jenny O'Connor. Encompassing Cordials, to Beer, Jams to Pesto, there is a magnificent range of culinary delights using locally sourced ingredients such as Nettles, Dandelion, Woodsorrel, Hawthorn and Elder Flowers to name but a few.



Members of the GIY group at the launch of the new Duhallow Hedgerows booklet.

### Tree planting

During the winter months, a small apple orchard was planted in the grounds of the James O'Keeffe Institute with 30 trees, including eaters and cookers. The trees have settled in and are growing well. It has been many years since the Convent Orchard was removed from the grounds and this new addition was welcomed this year by native bees and other pollinators. The orchard is a semi wild area, and a wild flower meadow is growing strongly around the trees.



Michael Doyle receiving a presentation from Chairman Cormac Collins in recognition of the huge voluntary contribution he made throughout his time on the board of IRD Duhallow.

Considerable tree work and hedge planting has been carried out in the past 12 months, including a beech hedge running up both sides of the JOK drive, and a small area of native hedging.

### Guest speakers

A very interesting talk on Swifts and their conservation was given by Linda Huxley of GMIT. The Swift is a summer migrant that breeds throughout Europe and much of Asia and winters in southern Africa. In recent years, however there has been much concern for Swifts as their numbers have been in decline throughout many parts of their range. Ms Huxley demonstrated some simple measures that can help improve the status of Swifts, in Ireland. These included the production and installation of nesting boxes into buildings that are undergoing refurbishment through the support of Tús and RSS Participants.

Birdlife and nature conservation on the Channel Island of Guernsey was the subject Victor Froome's public talk in September 2014. Victor is a naturalist, ecologist and environmentalist with La Société Guernesaise (Guernsey's local research, natural history and conservation society). Victor also spoke on all things nature from creating insect hotels to developing small nature reserves in your garden. He also gave advice on how to attract more wildlife into your garden.

Nearly 30 early birds caught this year's annual Dawn Chorus. Visiting Ireland again, Victor was on hand to help Brin McDonnell lead the group through the Island Wood.



Linda Huxley gave a very informative talk on 'Swifts' to members of the Duhallow Bird Watch Group.

## Duhallow Angling Centre of Excellence



Duhallow Angling Centre of Excellence Co-ordinator Tom Ankettell teaching the intricacies of Fly fishing to Luke Kelleher, Daniel Kelleher and Daniel Buckley.

The development and preservation of our natural resources has been a key strategy for IRD Duhallow since its inception. LEADER funds have facilitated the careful development of many of our rivers over the past twenty five years and the onset of the LEADER 07-13 programme brought with it the opportunity to build on this work through the establishment of an Angling Centre of Excellence in Duhallow.

Duhallow has an abundance of rivers which contain a healthy stock of wild brown trout, but are in a mostly undeveloped state. IRD Duhallow recognised the importance of such a natural amenity not only to the local communities but as a major opportunity to attract visiting anglers and their families to the region.



Capital works such as these foot stiles, and angling stands have been a key part of the development plan of the Angling Centre of Excellence. This will allow easier access to anglers visiting the region.

The angling centre in consultation with local angling groups co-operated to draw up plans, which would create better physical access, make day tickets to all the rivers more accessible, provide information, angling guides, and up to date information on angling and local accommodation and local events.

### Capital Developments

The installation of footbridges and stiles has greatly enhanced access for the local anglers and walkers as well as visitors along our waterways. The Kanturk and District Anglers in co-operation with other local angling groups and local landowners were instrumental in the development of this access, which will be a key selling point for visitors to the area.

The Angling centre identifies the need for a coarse fishery in the region and set about improving previous development work at Banteer Pond Field. In co-operation with the Banteer Community Council the angling centre has now installed a further four angling stands which are wheelchair accessible, as well as the installation of life saving equipment. Inland Fisheries Ireland has come on board with the project and is supporting the implementation of further stocking of coarse fish in the pond.

### Angling Camp

The annual summer angling camps for children which began in 2012 have been a major success with over fifty boys and girls having attended so far. This year we held an Easter angling camp which proved hugely popular to budding Anglers. The Angling Centre of Excellence places

a keen emphasis on the development of angling among children and nurturing of future anglers, recognising that the introduction of young children to angling is vital to the future preservation of our waterways.



The Stars of the Future! Budding Anglers honing their skills at the Angling Centre of Excellence Easter Camp on the Dallow river.

### Training through the Angling Centre of Excellence

A key focus of the Angling Centre of Excellence has been on the development of angling skills coaching targeting adults of all ages. In 2014 we held coaching events for beginners and masterclasses for the more experienced anglers who wished to learn new techniques. Equipment is available to anyone who requires it, through the Angling Centre of Excellence, allowing people to get a taste of Angling without having to incur a huge expense. Such has been the success of the coaching programme that the Trout Anglers Federation of Ireland has stated that the Duhallow coaching programme is an inspiration to all regions. The federation is now setting up coaching hubs in all four provinces of Ireland. The Duhallow Angling Centre has agreed to be the main coaching hub in Munster for the federation.

### Tourism

Visiting anglers and their families are always welcome to the region and the Angling Centre of Excellence can issue angling permits, provide angling guides and angling equipment, to ensure that visitors have a positive experience of angling in our Trout teemed rivers.



Fly fishing lessons form a huge part of the work of the Angling Centre of Excellence Co-ordinator.

There is huge potential for the development of the Duhallow economy through attracting an increased number of anglers to the region, which will benefit our B&Bs, Restaurants, and Pubs etc. The Angling Centre of Excellence partakes in a number of marketing measures to promote the region as a must visit destination for Anglers. They recently had a promotional stand at the angling show in Utrecht Holland and at the CLA game fair in England. This was done in co-operation with Fáilte Ireland.



Angling Centre of Excellence Co-ordinator Tom Ankettell took a stand at the Angling Fair in Utrecht, Germany, promoting the region as an excellent spot to visit.

This year, Duhallow was delighted to host the 5 Nations Fly Fishing Championships and welcome many international visitors to the region. Nine teams competed including three from Ireland, two from France, two representing Scotland, and a team from England and Belgium.



Board member of IRD Duhallow Michael Twohig, leading the Irish team at the Parade of Nations. This was part of the opening ceremony for the 5 Nations International Fly Fishing Competition.



## Culture and Heritage

### Culture

IRD Duhallow has culture and heritage as the 4th pillar of its strategy, because we believe that through it we foster the creativity of communities and individuals. The distinctive and rich culture of the Sliabh Luachra region of Duhallow has been valorised through the establishment of cultural facilities, the most recent being in Gneeveguilla with the refurbishment of the old Credit Union Offices with LEADER support this year, bringing to four the number of heritage centres across the region.

The Sliabh Luchara Summer Schools in Bruach na Carraige continues to grow and fifty young people participated this year and were tutored by those who completed the LEADER funded master classes in the past.

Our Sliabh Luachra Cultural Trail, a route some 130 km, takes in the birth places of the region's musicians, poets and writers as well as some heritage and archaeological sites and will be launched on heritage week next August.

Special signage was designed and erected with the co-operation of Cork and Kerry County Councils. Information boards give the background and context of each site on the Trail. A brochure was also produced and the [www.sliabhluchra.com](http://www.sliabhluchra.com) website was upgraded. The website facilitates user interaction with routes and points of interest as they travel. This website also acts as a portal for Bruach na Carraige, Ceoltoiri Sliabh Luachra and cultural events of interests happening locally. At Bruach na Carraige, the Sliabh Luachra archive was built upon over decades, through voluntary collections and in 2014, through funding sourced from the Heritage Council of Ireland, the archive was catalogued facilitating community and international access and engagement.

### 1916 Commemorations

IRD Duhallow is facilitating a programme of events throughout the region for the upcoming centenary of 1916. An inventory of monuments and their state of preservation has been compiled. A committee was established to plan appropriate ways to commemorate, promote monument upkeep for this coming year and encourage individuals and communities to get involved. It is envisaged that 2016 will see Duhallow's communities host a variety of commemorations, both at a large and small scale.



James Buckley, works on community archive and heritage projects.



Young Piper Alex Dineen is learning to play with Newmarket Pipe band. Duhallow boasts three pipe bands that are at hand to enhance community events and ceremonies.



Nora Reidy performing one of her very famous recitations at a seisiún in Glash.



Danish Choir Húsakóríd put in a special collaborative performance with the Duhallow Choral Society, in Boherbue Church, as part of the Cork International Choral Festival.



The banding site at Tullylease has undergone significant refurbishment and has been restored to working order once again.

### Heritage

Among the heritage projects that came to fruition during the year was the completed refurbishment of the banding site at Tullylease. This was a major project carried out painstakingly by the Community Council. The banding site was originally used for making and repairing wheels of carts when they comprised of wooden spokes and iron bands. It was a significant industry in the area and served a wide region. It is now restored for current and future generations.

Heritage training initiatives of previous LEADER programmes and the earlier years of the current programme have led to a number of projects being undertaken and completed during the past year. The Historic Grave Recording project resulted from training provided by Eactra Archaeological during 2014/15. The Graveyards surveyed included:

Clonfert (continued), Kilmacow, Kilcorcoran, Old Dromtariff, Kiskeam, Rockchapel, Old Kilcorney, Lyre, Drishane (continued), Clonmeen (continued), Newberry (continued), Taur, St. Anna's Millstreet town and Millstreet Union Workhouse, Millstreet. IRD Duhallow and the Community Groups of the region know of the critical importance to record this information now, and ensure that it is digitised for future preservation. We are grateful to the intense voluntary effort that was put in by the communities without whom the project could not be delivered. In addition, IRD Duhallow commissioned local Meelin business – Air Take Photography, to provide low level aerial photographs capturing a snapshot of the condition and layout of the graveyards which directly correlate with the ground survey recorded. All information relating to this and the previous training project can be found on the website [www.historicgraves.com](http://www.historicgraves.com)



John Tierney Archaeologist with Eactra Archaeological Projects Ltd. provides instruction to volunteers at Kilmacow graveyard in Lismire in historic graveyard recording and publication.

IRD Duhallow Ancestry was formed by a group of people who had participated in LEADER funded Heritage training programmes during the 2013/2014.



Maura Walsh, Michael Doyle and Helen O'Sullivan of IRD Duhallow with Duhallow Ancestry Chairman James Twohig, members of the Duhallow Ancestry group and descendants of the Aldworth Family - the Cohranes, Ben Stocks, Philippa Vereker and Stephanie Tiley.

## Culture and Heritage

A Certificate in Oral Heritage delivered through the University of Limerick followed by the History of Family and Genealogy Research course gave the participants the confidence and skills necessary to form Duhallow Ancestry under the Chairmanship of James Twohig. The group's first and very ambitious project was to establish the Aldworth Archive and research the history of the family that was associated with Newmarket from 1615 - 1926. The James O'Keeffe Institute, an early Georgian mansion, was constructed in the early 1720s on the marriage of Richard Aldworth and Elizabeth St Leger of Doneraile Court. The Aldworth family lived here until the 1920s. In 1927, they sold the house to the Sisters of St. Joseph who ran a Convent and School here until 1973 for female boarders and day students. The James O'Keeffe Memorial Institute bought the building later and established it as a centre for rural development.

An exhibition launched in October, celebrated the duration of the Aldworth residency in Newmarket (1615 - 1926), this was opened by two of Major John Aldworth's grand-daughters – Ms. Stephanie Tiley and Mrs. Elizabeth Cochrane along with extended family members, who travelled from the United Kingdom. Janet Stocks, grand-daughter to Major John C. O. Aldworth donated her collection of family papers, prior to her untimely passing in 2014.

The cataloguing of this donation of papers – which are in fact a collection of Landed Estate Papers, has to date been the main focus of the in-house community archive. The collection of papers date from 1695 to 1940 and contain more than one thousand documents.

### Celebrating Cork Past Exhibition

The Celebrating Cork Past Initiative, supported by Cork City and County Councils in conjunction with Cork Lions Club, is held annually and encourages local historical groups to attend and display research and information from their areas. IRD Duhallow attended and displayed information on the culture, heritage and conservation work being undertaken in Duhallow.



Denis J Buckley, President of the Irish in Europe Association, pictured with Yvonne Brosnan at the IRD Duhallow stand, at the Celebrating Cork Past Exhibition.

### Publications

Duhallow has maintained its tradition of local publications with three published of late. Rockchapel: My Own Place, by Rockchapel Development Association, illustrates Rockchapel's development as a parish. Cumann Luachra launched their 16th Cumann Sliabh Luachra in the Denis Murphy Memorial Hall, Gneeveguilla in November 2014. The Great Famine in Duhallow, by Donie Murphy, was launched in July 2014 by Fr. Sean Tucker. The publication relays this traumatic chapter which occurred relatively recently and decimated the region's population. We truly believe that without the research and production of local historical publications our distinctive culture and heritage will be lost for future generations.



Members of Cumann Luachra at the launch of the 16th Issue of the Cumann Luachra Journal.

### Built Heritage

The conservation and restoration of a number of old buildings for community use has been undertaken through LEADER in the past number of years. The impetus for this work has come from communities who are aware of historic buildings in urgent need of work and also from the Tús work placement scheme, where many participants are from the construction sector and are anxious to up-skill where possible.



Huge community turnout for the official opening of Glash.

The derelict house in Kilbrin and birth place of Archbishop Croke, after whom Croke Park is named, had been identified by the community as a major restoration project since LEADER 1. The current LEADER Programme was adequately resourced thankfully, to allow projects such as this to be undertaken. The work was overseen by Kevin Blackwood Conservation Architect with PJ Lane engaged for conservation work, which is now completed and a credit to the community and craftsmen that completed it. Kilbrin Community Council envisages that the house, because of its significance to the GAA, will become a national attraction housing memorabilia of Dr. Croke. It is intended that it will also function as a rambling house, where cards, rings, storytelling and music sessions can take place.



Musicians such as Davie Fitzgerald pictured here with his young grandson Aidan, ensure that traditional tunes are passed down from generation to generation.



Conservation Architects Benan Clancy and Kevin Blackwood with IRD Duhallow Heritage Animator Fidelma Mullane, Helen O'Sullivan, and John Corkery from Kilbrin, pictured at Dr. Croke's House prior to the commencement of the restoration work. After significant refurbishment, the building is now being used for community events and meetings.

The old Glashkileen National School has undergone careful restoration as well as a carefully designed extension which will give the building a new lease of life as well as a multipurpose community facility.

### Traditional Building Skills Workshops

In order to increase awareness and develop construction skills and ensure proper conservation throughout the region, a series of traditional building skills workshops were held at the James O'Keeffe Institute, Newmarket, led by Pat Mc Affee, master Stonemason and author. Participants were drawn from the community, Tús and RSS participants who received training in lime mortar, stone cutting, stone masonry and stone and sod ditch building. A Lime Forum workshop was held the previous year.

The derelict outbuildings around the James O'Keeffe Institute provide an ideal location to practice these traditional skills. Some structures required stabilisation works followed by restoration works. LEADER provided grant aid for the materials, with Tús and RSS participants undertaking much of the work. The restoration of the smoke house and pantry was nominated for a European Nostra Award – An EU Heritage accolade of merit. The old Carriage House has undergone restoration work and will house an array of vintage farm machinery and implements. It is due to be completed in the late autumn.



Top quality traditional stone work has been undertaken by Tús participants on the grounds of the James O'Keeffe Institute through skills acquired on the Traditional Building Skills Workshops.



## Tourism in Duhallow

Nestled between the scenic popular tourist regions such of Killarney, West Cork and Blarney, Duhallow is in a prime position to attract additional visitors to the region for Activity type holidays. The Enterprise Working Group has put in place a number of new initiatives as it seeks to capitalise on Ireland's growing tourism trade and Duhallow's natural culture and heritage.



"Go!" Cork Rose Anna Geary officially started the inaugural IRD Duhallow Cycling Sportive.

### Duhallow Cycling Sportive

The roads of Duhallow were alive to the sound of whizzing cyclists as pedal power and banter were the order of the first ever Skoda Cycle Series in Cork, which took place on the 26th July 2015. Over 250 cyclists, aged from 12 years old to 65 and over took part in a 50km or 100km route, taking in the finest of North Cork scenery. Due to the huge success of last year's event, the second IRD Duhallow Sportive took place again this year on Saturday 25th July. Cyclists chose from three routes on the day: 110km, 70km and a 40km.



The 5 Nations Fly Fishing Championships had 9 teams in total competing: 3 Ireland, 2 France, 2 Scotland, 1 England and 1 Belgium.

### Accommodation

The lack of local accommodation has been a huge hindrance to the development of the Duhallow Tourist Economy. Through the Diversification from Agriculture measure under the LEADER 07-13 a number of self catering accommodations have been funded. The Working Group will also make the development of accommodation a priority in the new programme.



Michael and Pam Thornton of Coolefield House B&B in Millstreet being presented with the Best Customer Service Award at the Duhallow Business Awards 2015 by IRD Duhallow CEO Maura Walsh.

### Walkers in Duhallow

IRD Duhallow has placed a keen focus on the development of walks and outdoor eco tourism since its inception. The 5 Looped Walks and the Duhallow Way have been developed with the support of the RSS and the Walks Scheme.

The IRD Duhallow Walkers are a group of 12 people working towards the achievement of the Mountaineering 2 certificate from Mountaineering Ireland. Once they receive this qualification they will be in a position to lead walks for tourists both international and domestic to tackle the various sights of Duhallow.



As part of Day of the Regions, Mary Murphy, Vera Walsh and Mary O'Mahony were on the guided trail of Shrone and the Paps.

### The Duhallow Arenas

The Duhallow Arenas have been recently refurbished to promote the development of the Sport Horse Industry in the Region. Duhallow Breeders are well situated in an equine hub of excellence and sport horses from the region are in high demand from International visitors and buyers. Minister Simon Coveney has placed a keen emphasis on the development of the equestrian industry as a driver of local economies and in March 2015 formally launched 'Reaching New Heights' a strategy for the Sport Horse Industry. The work being done by local producers within the structure of the Duhallow Arenas is a key step towards achieving these aims. Building on this, the Green Glens Arena hosted the 2014 European Pony Championships, and have recently been awarded the 2016 FEI European Junior Young Rider Championships and the 2017 FEI European Eventing Championships.



The FEI European Pony Championships were held in Millstreet which saw competitors take on the purpose built cross country course designed by renowned Course Builder Mike Etherington Smith.



Former County Manager the late Noel Dillon R.I.P. officially opened the Newmarket Pitch and Putt Course.

### Newmarket Pitch & Putt

This March saw the much anticipated opening of the newly developed Newmarket Pitch & Putt Course. The course was officially opened by former County Manager, the late, Noel Dillon and was attended by a number of top Pitch and Putt Union of Ireland Officials including the President, Eamon Birchall. There are upwards of 125 members now registered with the Club. The Committee are aiming to host the National Match Play Championships in the near future. This annual event is run over the May Bank Holiday weekend and brings hundreds of players and spectators to the host venue. In addition, a number of other Pitch & Putt Clubs have expressed an interest in bringing their annual outings to Newmarket. Overall this has resulted in an increase in the level of domestic tourists visiting the Newmarket Area.

Sport is seen as a social activity and its social significance spreads well beyond those who play. Games like Pitch and Putt are often pointed to in international research, as a key generator of social capital. This new amenity in Newmarket is helping to bring people together and therefore hopefully increasing organised collective activity, which is particularly important when encouraging and promoting community volunteerism. Family membership is offered at a discounted rate whereby two adults and any number of children under the age of sixteen can avail. Every Wednesday night during the Summer months a competition for members is held. Teams are drawn on the night resulting in players facing different opponents that they might not have previously met. This is proving positive in terms of growing the intrinsically linked social aspect of the club. Coaching workshops are also being delivered to a number of Primary School students in the region. In addition, two Actively Retired group workshops were conducted during the month of May as part of the Bealtaine Festival.

Peter Dunlea's creation of the giant Cú Chulainn was one of the highlights at the official opening of Newmarket Pitch and Putt Course. He is pictured here with members of the Newmarket community.



## LEADER 07-13

In 2007 IRD Duhallow completed a very ambitious strategic plan which was submitted for LEADER funding. Under the four pillars of Human, Cultural, Economic and Environmental Development, it outlined in detail the inputs, outputs and impacts of each of the actions proposed. Now that the LEADER Programme draws to a close, IRD Duhallow has commissioned Mary Immaculate College Limerick, along with CAPE Consultancy to carry out an in-depth review of the implementation of this plan. The preliminary report has been received and the findings are very encouraging. The report (summarised below), compares data over the 25 years of the four LEADER programmes and we look forward to the final report.

### BUILDING COMMUNITIES AND SOCIAL CAPITAL

Participation of Communities as project promoters has grown from 10% in LEADER I to almost 70% in the current programme with new community and voluntary groups emerging with each programme. The number of Active Community groups in the first LEADER programme was 3, whereas now, over 100 Community and Voluntary groups were engaged through the 07-13 programme.

### CAPACITY BUILDING

The trajectory of community group development over 25 years of LEADER in Duhallow is characterised by an increase in the number of organisations, a growth in their levels of activity and an expansion of the range and depth of local services they provide and the scale of projects they manage. Duhallow Communities manage and operate 25 Community Enterprises employing over 550 people.

### SUPPORTING SUSTAINABLE ENTERPRISE

#### CREATING JOBS

Levels of job creation among LEADER supported enterprise projects shows that 928 Full Time job equivalents have been created directly through the 4 LEADER programmes in Duhallow at a cost of less than €16,000 per job.

#### MULTIPLIER EFFECT

77% of LEADER grant aid and the project expenditure it generates, stays within the South West region with 46% remaining in Duhallow. Thus the benefit that LEADER derives to the wider local economy - beyond the projects funded and as a result LEADER plays a commendable role in supporting and sustaining several businesses and jobs in addition to those which LAGS tend to enumerate among their beneficiaries.

#### SUSTAINING JOBS

Over 70% of Enterprise Firms supported through the 4 LEADER programmes over a 25 year period are still operational and have survived the current recession, thereby placing them in a strong position to expand over the coming years.



IRD Duhallow Board Member Jack Roche with Luis Chavez, Portugal; Kirstine Birke Lunde, Denmark; and Goran Soster, Slovenia, at the ELARD CLLD Conference held in Brussels.



Minister for Rural Development Ann Phelan met with Maura Walsh in the LEADER village at the National Ploughing Championships. The Minister was escorted by Caoimhe Nic Allabroin of ILDN.

### ENVIRONMENTAL OUTPUTS AND IMPACTS OF LEADER

The Environment has been central to successive LEADER strategies of IRD Duhallow and the current one has "the Development of Natural and Cultural Resources" at the heart of its approach to achieving territorial competitiveness. An active, multidisciplinary environment Working Group has driven the strategy and taken it to the next level achieving 2 LIFE Programmes.

Environment projects supported by LEADER while in the main developed by IRD Duhallow itself, have led to strong community and land owner buy-in, raising awareness of water quality, catchment management, land use policy, recreation and eco tourism potential.

LEADER's focus on fresh water Pearl Mussel, Salmon, Trout, Hen Harrier and other bird species has led on to 2 major Environment Enhancement programmes.

### LOCAL ACTION GROUP

IRD Duhallow is much more than an administrator of LEADER – it is pro-active as a project promoter itself, investing its own funds and resources in establishing pilot projects, running training programmes, marketing the territory and strengthening its identity, cementing linkages with other territories and agencies and developing the capacity of the local population. IRD Duhallow is a demonstrator and enabler of processes, structures and initiatives, which have subsequently been pursued by civil society organisations.



Declan Carey facilitates the mid year review as part of Board training.

Minister of Environment, Community and Local Government Alan Kelly, speaking with IRD Duhallow CEO Maura Walsh at the National Ploughing Championships.





LEADER Projects 09-14

PROJECT PROMOTER	DESCRIPTION	€
<b>Support for Business Creation &amp; Development</b>		
Agility Fitness Studio	The purchase of equipment.	€7,459.00
Allens of Allensbridge Ltd.	The purchase of new Rola Trac flooring.	€149,996.00
Allenweld Ltd.	To purchase a press brake & shears.	€56,662.00
Alu Cat Ltd	The development of Alu Cat.	€120,532.00
Ballydesmond Cemetery Committee	To develop a Community Cemetery.	€139,847.00
Ballydesmond Leisure Ltd.	To develop an astro turf pitch.	€109,716.00
Bio Atlantis Manufacturing	The purpose of installing an automated packaging line.	€52,311.00
Care2Share Ltd	To purchase equipment for marketing presentations.	€324.00
Coleman Agri Solutions Ltd	To purchase machinery.	€25,000.00
Cube Business Consulting Ltd	Feasibility study on business consultancy.	€17,625.00
Dan Twomey	The purchase of equipment.	€40,000.00
Derry Fitzpatrick	To develop a prototype and to carry out a feasibility study.	€11,250.00
Duhallow Community Food Services	To develop a new chill & blast room, purchase of refrigeration & upgrade to canteen.	€84,594.00
Duhallow Innovation Centre	To develop a food innovation centre in Newmarket.	€148,024.00
Enterprise Development Working Group	To run two enterprise seminars.	€14,283.00
Fleur Daly	To purchase candle making equipment.	€20,645.00
Glide Surfboards	To purchase a surfboard shaping CNC machine.	€21,375.00
Healy Sound Donoughmore	To purchase equipment.	€40,780.00
Hickey Metering	To fund the capital investment and to purchase specialised vessels.	€46,025.00
James Hickey	The purchase of equipment.	€21,059.00
Jeanette Dennehy	To refurbish the premises of Thoughts that Count.	€11,164.00
Jeremiah Dennehy	To develop a new facility and funding for equipment for Brogeen Crafts.	€90,503.00
Jerry Pat O'Leary	To develop a fitness studio in Millstreet.	€10,534.00
Kevin Collins	Purchase of inflatables and equipment for Just 4 Leisure.	€48,513.00
Kiely Precision Engineering	To purchase equipment.	€6,631.00
Leo Fitzgerald	The purchase of recording equipment for a music studio.	€15,045.00
Maritime Tourism Ltd. & Ballyhass Lakes	The development of a long term strategic plan & CRM system.	€17,010.00
Millstreet Community Development Assoc. Ltd.	The development of a new E-centre.	€10,000.00
Murphy Trailers	The purchase of new equipment.	€59,214.00
Patricia O'Reilly	The purchase of exercise equipment for Cork Kangoo Jumps.	€12,194.00
Remote Healthcare	To carry out a feasibility study.	€30,000.00
Sapphire Signs	The capital works and equipment for the expansion and diversification.	€119,243.00
Sheila Carver	Marketing for corkentertainment.ie.	€1,335.00
Social Economy Working Group	To carry out analysis and proposals for the development of DCFS and Duhallow Farmers Market.	€4,410.00
Solido Flooring	The purchase of new equipment for Solido Flooring.	€12,584.00
The Night Owl Blending Co.	To carry out a feasibility study into new product development.	€30,000.00
The Secret Garden	To construct a classroom facility, developing of outdoor demonstration area and to provide car park.	€16,100.00
<b>Diversification into Non Agriculture Activities</b>		
Dan Collins	The development of a self catering accommodation at Dennehy's Lodge.	€39,900.00
John Walsh	The development of a self catering accommodation.	€22,500.00
Kilguilkey House	To develop a cross country facility as an alternative enterprise.	€62,755.00
Niall Moynihan	To develop an organic learning farm and shop.	€22,250.00
Patricia & Declan O' Riordan	The development of a self catering accommodation at Duarrigle Coach House.	€40,000.00
Patricia & Declan O' Riordan	The development of Duarrigle Walk.	€7,000.00
Peter McCabe	To fund the upgrading of the kitchen at Ballymaquirke fruit farm.	€11,422.00
Stephen Walsh	The development of a self catering accommodation.	€39,900.00
<b>Basic Service for the Economy and Rural Population</b>		
Banteer Community Centre	To fund phase one of the expansion of community facility to include changing rooms and gym equipment.	€143,140.00
Ballydaly Hall Committee	To install a new heating system in the community hall.	€4,035.00
Ballydesmond Community Centre Committee	The upgrading of the community hall.	€47,857.00
Banteer Community Council	Reroofing, new windows and car park at Banteer hall.	€62,250.00
Banteer Community Sports Field Ltd.	Repairs to Banteer Community Sports Spectator Stand.	€4,436.00
Bweeng Community Hall Committee	Developing an amenity area in Bweeng.	€37,256.00
Castlemagner Community Centre	To refurbish Castlemagner hall to include rewiring, reroofing and extension.	€4,657.00
Community Development WG	The development of media training facilities.	€25,477.00
Dromtariffe Parish Hall Association	The Refurbishment of Dromtariffe Parish Hall.	€54,540.00
Duhallow Choral Society	The purchase of new equipment & uniforms.	€15,700.00
Duhallow Community Food Services	Kitchen equipment and enhancements.	€115,405.00
Duhallow Community Laundry	To establish a community led Laundry and Repair service.	€71,250.00
Freemount Community Dev. Association	Installation of new under floor heating for the hall and the purchase of over roofing.	€78,088.00
Freemount Community Playground Dev. Association	The development of a playground site.	€42,020.00
Gneeveguilla Community Development Council	To establish a cultural amenity centre in Gneeveguilla.	€144,510.00
James O'Keeffe Memorial Foundation	Refurb. of kitchen in the after schools building & installation of new windows & groundworks.	€42,372.00
Kanturk & District Community Council	The purchase of new figures for town crib.	€2,250.00

LEADER Projects 09-14

PROJECT PROMOTER	DESCRIPTION	€
Kanturk & District Community Council Ltd	Materials for Kanturk Arts Festival and the refurbishment of the Edel Quinn Hall.	€39,002.00
Kiskeam Development Association	To extend and refurbish Kiskeam Community Centre and to purchase furniture.	€85,724.00
Lismire Development Association	The development of a picnic area and outdoor gym.	€20,514.00
Lyre Community, Cultural, Sport & Leisure Association	For the purpose of developing a new community facility.	€150,000.00
Meelin Community Sports Centre	Refurbishment to Meelin Community Sports Centre.	€109,885.00
Rathmore Social Action Group	The purchase of stage equipment and editing software.	€11,196.00
Rockchapel Comhaltas Ceoilteoiri Eireann	Bruach na Carraige Extension Phase 2.	€10,732.00
Rockchapel Community Centre Committee	The purpose of refurbishing the Community Centre.	€30,938.00
Saol Network	The construction of a meals centre in order to meet a need for additional meals on wheels in the Duhallow area.	€150,000.00
Social Economy WG	To fund equipment for the community enterprise DCFS.	€12,558.00
Youth and Education WG	To encourage young people to become actively involved in their communities.	€10,071.00
<b>Village Renewal &amp; Development</b>		
Araglen Development Association	Landscaping of Glouneen river loop walk, to create a moveable stage and extension of Phase 2.	€125,832.00
Ballydesmond Community Centre Committee	To replace the windows and doors.	€6,082.00
Ballydesmond Community Development Association	Renewal works to the village.	€21,866.00
Banteer Community Sports field	To fund the upgrading of walks and resurfacing of Banteer Sports F ield Walk.	€36,996.00
Boherbue Development Association	Restoration of the village pump and urban renewal.	€2,238.00
Boherbue Grotto Subcommittee	To erect an altar at Boherbue Cemetery, to develop and enhance grotto in town.	€78,873.00
Boherbue Parish Hall	Refurbishment works to hall.	€150,000.00
Bweeng Community Hall Committee	To refurbish the toilets in hall, development of playground, to carry out a feasibility study and development of walk.	€137,174.00
Castlemagner Hall	Refurbishment of Castlemagner hall and to purchase a sound & lighting system.	€108,432.00
Community Development WG	Purchase and installation of media equipment & to design and erect Community Signage.	€65,000.00
Cullen Community Centre	To preserve and renovate Cullen Community Centre.	€150,000.00
Donoughmore Community Centre Ltd.	To develop a MUGA, resurfacing of car park, dev. of playground and sports field and refurb. of community centre.	€294,306.00
Donoughmore Village	To fund the General Appearance, Upgrading & Landscaping in Donoughmore.	€10,000.00
Dromtariffe Parish Hall Association	Refurbishment of Parish Hall.	€27,393.00
Foiloighig Development Association Ltd.	To renovate the old Foiloighig School and to erect signage.	€22,818.00
Freemount Community Development Association	To provide facilities in hall, to carry out a feasibility study and to develop and enhance the village amenities.	€96,000.00
Gneeveguilla Community Development Council	The purpose of undertaking a feasibility study of Gneeveguilla Community Centre.	€26,136.00
Kanturk & District Community Council	Development of stage lighting for the Edel Quinn hall.	€20,066.00
Kanturk Christmas Lights Development Association	The purchase of Christmas lights.	€37,896.00
Kilbrin Community Council	To refurbish Kilbrin Community Squash Courts and enhancement to village.	€6,889.00
Kilcorney Playground Development Group	To develop a playground in Kilcorney.	€38,751.00
Kiskeam Development Association	To carry out refurbishments in the hall, erection of footbridge and landscaping of village.	€88,836.00
Laharn Community Action Group	To undertake landscaping, groundwork and provide equipment at Laharn Community Centre.	€15,989.00
Lismire Development Association	The development of a community playground.	€38,769.00
Lyre Community Culture Sport & Leisure Association	To carry out a feasibility study on Lyre Village Green.	€4,230.00
Millstreet Community Council Ltd.	To redevelop the old tennis grounds into an astro turf amenity.	€75,000.00
Millstreet Tidy Towns & Tourism Association	To improve the general appearance of town & walk, through landscaping works, street furniture & lighting.	€17,520.00
Nadd Development Group	Landscaping in Nadd village.	€2,100.00
Newmarket Community Development Association	To refurbish the CYMS Hall Newmarket.	€22,897.00
Newmarket Development Association	To undertake feasibility into the development of new community amenities in Newmarket.	€50,947.00
Newmarket Sports & Leisure Facility	To develop a community sports & leisure outdoor amenity for Newmarket and its hinterland.	€150,000.00
Newmarket Urban Renewal Project	Upgrade Town Park, Signage and Lighting.	€31,241.00
Rathmore Community Council	To fund Playground, Village Renewal Analysis and to provide lighting from Rathmore to Church Place.	€160,000.00
Rockchapel Community Centre Association	Reroofing and the fitting of new windows and doors and the purchase of trestle chairs.	€34,917.00
Rockchapel Dev. Association	To renovate and upgrade the community amenity located at the boundary of the three counties.	€9,291.00
<b>Conservation &amp; Upgrading the Rural heritage</b>		
Aubane Social Club	To host the centenary celebrations of the Old School.	€2,470.00
Ballydesmond Dev Association	Publication of the book 'Ballydesmond; A Rural Parish in its Historical Setting'.	€3,609.00
Ballyhass Parent & Toddler Group	Publication of Ballyhass Family Cook Book.	€2,141.00
Banteer Ploughing Association	Celebrating 50 Years of Ploughing.	€6,909.00
Boherbue Dev Association	To fund the publication of the book 'Boherbue Village – All About Townlands'.	€4,496.00
Boherbue Parish Council	Publication of the history of the parish of Boherbue and Kiskeam.	€4,404.00
Boherbue Parish Hall Committee	To purchase equipment for Boherbue Parish Hall.	€37,127.00
Castlemagner Sinsir	Historical DVD on Castlemagner and publication of Castlemagner: A Pictorial History.	€8,289.00
Centenary Committee of the Infant Jesus Sisters	Research and Publish book and DVD on the Infant Jesus Sisters.	€59,552.00
Community Development WG	Dev. of Cork Choral Fringe Festival, production of booklets, marketing, signage, and the development of smoke house.	€53,133.00
Community Forum	Development of three websites & agri museum.	€112,125.00
Cullen Pipe Band	Development of new band practice hall, new uniforms, new instruments and new equipment.	€98,782.00
Cumann Luachra, Rathmore	Purchase of stage equipment, publication of the 14th, 15th and 16th issues edition of the Sliabh Luachra Journal.	€25,306.00
Donie Murphy	To fund publication of the Great Famine in Duhallow and the events of the Land Wars.	€8,550.00
Donoughmore Community	Development of Donoughmore Community Carnival.	€5,111.00
Donoughmore Historical Group	Publishing of 1,500 copies of a historical book.	€6,352.00
Dr. Mary Joyce Leader	Publication of bilingual children's book.	€4,276.00



LEADER Projects 09-14

PROJECT PROMOTER	DESCRIPTION	€
Dromtarriffe Actively Retired	Publication of "How it Was, a Glimpse at Life and Traditions of Bygone Days in Rural Ireland".	€3,862.00
Duhallow Womens' Forum	Sculpture of Sr Mary MacKillop at the JOK and to produce book in honour of Nora Herlihy.	€95,374.00
Environment WG	Development of Environmental Resource Centre to carry out Bird Watching Field Trips, Raptor & Barn Owl conservation projects.	€83,473.00
Environment WG	Preservation works of old pantry	€38,497.00
Environment WG	To carry out an Analysis & Development study on the Boglands of Duhallow & Conservation of Hedgerows and Development of Old Courtyard.	€159,944.73
Fr. John J. O' Riordan	Publication of book "Kiskeam Versus The Empire."	€1,949.00
Freemount CCE	To redevelop and extend Freemount Heritage Centre and to fund sound & lighting of centre.	€88,142.00
Gerard O'Keeffe	To publish the book 'Termination of the Lethal Injection'.	€4,636.00
Glash Dev. Association	To carry out an analysis and development of the conservation of the Old School House at Glash.	€232,353.00
Gneeveguilla Community Council	Publication of a book on the History of St Josephs Church Rathmore.	€3,730.00
Gneeveguilla National School	To produce a Mural.	€450.00
Inchemay Historical Society	Erection of War of Independence monument.	€8,477.00
James O'Keeffe Memorial Foundation	Feasibility Study, Car Park and Meeting Room Developments.	€232,353.00
Kanturk & District Community Council	Publication of a historical book on Kanturk "Where Dalua Flows its Flood Along" and the refurbishment of Kanturk Trade Union Hall.	€10,661.00
Kanturk Angling Club	The development of a weir on Dalua river .	€43,982.00
Kanturk Town Twinning	Publication of a book on the history of twinning.	€2,025.00
Kilbrin Community Council	To carry out a feasibility study and the restoration of Dr. Croke's House.	€165,996.00
Kilcorney Community Council	The development of Kilcorney Community Feis.	€1,362.00
Laharn Community Action Ltd	Upgrading and landscaping works at Laharn Cross.	€9,606.00
Meelin Hall Committee	Publication of a historical book 'Meelin's Journey'.	€6,300.00
Millstreet Town Park Committee	Publication on the History of Millstreet Town Park.	€4,496.00
Newmarket Pipe Band	Publication of a book on the history of the Newmarket Pipe Band.	€3,163.00
Rockchapel Development Association	The History of the Parish of Rockchapel.	€6,300.00
SAOI Network	To host the Duhallow Bealtaine Festival.	€15,000.00
Tullylease Community Council	Restoration of Tullylease Banding Site.	€24,172.00
Youth & Education Working Group	Folklore project in Sliabh Luachra Primary Schools.	€10,806.00
<b>Training &amp; Information</b>		
Agriculture WG	To carry out counter balance forklift training.	€4,500.00
Agriculture WG	Development of a Grow It Yourself group & associated training.	€3,200.00
Community Development WG	To deliver a Script Writing Training Course.	€6,060.00
Community Development WG	To provide training for both the Domestic Violence & Bereavement Support Services.	€14,100.00
Community Development WG	To deliver programmes in Genealogy & Local History studies.	€51,199.00
Community Development WG	To run training programs in Oral Heritage Studies.	€65,201.00
Duhallow Choral Society	To run training for the Duhallow Choral Society.	€6,000.00
Duhallow Womens' Forum	To deliver Personal Development Training Courses.	€22,695.00
Employment & Training WG	To deliver various courses in computer applications.	€40,920.00
Employment & Training WG	To deliver two Water Meter Installer Training Courses.	€31,250.00
Employment & Training WG	To deliver training programmes to individuals of Employment Support Schemes or who are Unemployed.	€42,502.00
Employment & Training WG	To deliver two training courses in Accounts Administration.	€10,020.00
Employment & Training WG	To deliver training on Business Skills with Career & Social Media Networking.	€14,020.00
Employment & Training WG	To provide financial accounts training.	€6,620.00
Employment & Training WG	To provide training in the area of furniture recycling/restoration & upholstery.	€41,139.00
Employment & Training WG	To fund a Pre Start Up Business Programme.	€6,780.00
Employment & Training WG	To fund a Duhallow Digital Heritage & Tourism Course.	€5,240.00
Employment & Training WG	To fund Duhallow Historic Graves Equipment & a training programme in Historic Graveyard surveying.	€67,876.00
Employment & Training WG	To provide training & equipment on the use of chainsaws.	€9,200.00
Employment & Training WG	To provide specific training to managers of social enterprises.	€35,995.00
Employment & Training WG	To provide training in Book keeping, training on Taxation, CV & Interview guidance & Social Media Networking.	€61,844.87
Employment & Training WG	To provide Supervisory Management Training.	€7,100.00
Employment & Training WG	To deliver two domestic Digital Terrestrial Television Aerial Installation Training Courses.	€18,830.00
Employment & Training WG	To provide training in the area of upholstery.	€10,800.00
Enterprise Development WG	To support the training of at least 50 eligible start-up and expanding enterprises.	€52,171.00
Enterprise Development WG	To design and deliver a bespoke eco tourism training course in Duhallow.	€45,349.00
Enterprise Development WG	To run a Self Employment Opportunities Programme.	€3,930.00
Enterprise Development WG	To develop and deliver two walking leader training programmes.	€16,000.00
Enterprise Development WG	To deliver programmes that will help participants to develop their business through Marketing online.	€7,020.00
Enterprise Development WG	To develop and deliver a training programme for Successful Selling.	€6,790.00
Enterprise Development WG	To develop and deliver a training programme for Festivals.	€3,000.00
Environment WG	To deliver information seminars, lectures, workshops, training, demonstrations and environmental field trips.	€9,081.00
Environment WG	To deliver a programme to train people in waste, water & energy reduction.	€4,350.00
James O Keeffe Foundation	To purchase equipment to upgrade the facilities in the computer lab for the JOK Foundation.	€20,000.00
Millstreet LTV2 Committee	The purchase of new equipment.	€15,435.00
Rockchapel Comhaltas Ceoilteoiri Eireann	To fund master class training on traditional music and dance.	€19,870.00
Rural Development Bursaries	Bursaries for 4 Diplomas & 2 Degrees in Rural Development.	€30,660.00
SAOI Network	To deliver training workshops to older people in Duhallow.	€6,000.00

LEADER Projects 09-14

PROJECT PROMOTER	DESCRIPTION	€
SAOI Network	To deliver a Memory Through Media training programme.	€65,545.00
SAOI Network	To deliver two reminiscence training programmes for Leaders.	€4,110.00
SAOI Network	To deliver two Third Age training programmes.	€10,055.00
SAOI Network	To deliver 10 training courses on Photography and ICT.	€11,274.00
SAOI Network	To deliver a Media/ICT Mentor Training Programme.	€6,160.00
Youth & Education Working Group	To deliver an Arts Education Programme in Primary Schools.	€7,000.00
Youth & Education Working Group	To deliver 5 Youth Leadership Programmes.	€59,668.00
<b>Encouragement of Tourism Activities</b>		
Anna Leader Self Catering	The development of Self Catering accommodation.	€39,999.00
Ballyhass Lakes	To purchase activity equipment.	€86,876.00
Banteer Community Sports field	The development of Banteer Outdoor Gym.	€8,734.00
Banteer Gymkhana Ltd.	Purchasing of equipment for the gymkhana.	€20,000.00
Community Development WG	Duhallow Walking Map Guides.	€3,534.00
Community Development WG	Feasibility study on Newmarket Pitch & Putt Course.	€9,000.00
Community Development WG	The development of Newmarket Amenity Walk.	€74,075.00
Community Development WG	Facilitation of projects under the Gathering 2013.	€46,500.00
Conrad and Gisella Jones	Feasibility and development of Eco Pods in Mushera.	€58,602.00
Dan Murphy	The development of a Self Catering Townhouse.	€39,999.00
Donoughmore Community	The development of a Community Walk.	€41,349.00
Enterprise Development WG	To organise a Cycling Sportive.	€3,750.00
Enterprise Development WG	Capital Work and development of the Paps Loopwalk.	€30,000.00
Enterprise Development WG	Purchase of shell stands for the Hands of Duhallow.	€25,111.00
Enterprise Development WG	To fund the exploration of new and emerging tourism markets in Duhallow.	€30,000.00
Freemount Community Development	For the revival of the Freemount Community Festival.	€4,583.00
Freemount Macra na Feirme	To host a festival with a large range of activities for age groups.	€6,637.00
James O'Keeffe Memorial Foundation	To purchase a marquee and jumps for the Duhallow Arenas.	€98,379.40
Kanturk & District Community Council	Publication of Historical Walking Guides of Kanturk.	€2,000.00
Kanturk and District Anglers	Development of the Angling Centre Of Excellence.	€80,000.00
Kanturk Angling Club	Enhancement work to Banteer Pond & river.	€30,000.00
Kanturk Velodrome Committee	Development of an off road cycle track.	€149,863.00
Meelin Community Centre Committee	To fund the revival of a 3 day festival.	€4,375.00
Millstreet Community Council Ltd	To replace the existing cross on the top of Clara Mountain.	€3,953.00
Millstreet Horses Ltd.	Stables for the Green Glens.	€150,000.00
Newmarket & District Agricultural Show	Development of Newmarket and District Agricultural Show.	€9,350.00
Newmarket Community Development Association	To develop Newmarket Pitch and Putt Course, to provide Maintenance Equipment, Seating & Playing Equipment.	€200,000.00
Rockchapel CCE.	To extend Bruach na Carraige Rockchapel.	€49,308.00
<b>Co-operation Projectss</b>		
All Kerry Tourism	The development of a tourism website.	€10,000.00
Agriculture WG	To provide a stand at National ploughing championships.	€600.00
Agriculture WG	Training for rural abattoirs.	€8,500.00
Community Development WG	The development of the Duhallow 'Day of The Regions' Festivals.	€80,000.00
Economic Development Steering Group	Technical Study into the Economic Development Kerry & Duhallow.	€30,000.00
Enterprise Development WG	To deliver a young Entrepreneurial Programme for 5 secondary schools.	€48,340.00
Kerry Graveyards Steering Committee	Digitising of graveyards in Kerry.	€1,000.00
SAOI Network	Memory through Media Transnational project.	€9,502.00
St. Joseph's Foundation	The development of St Josephs Equestrian Centre.	€35,000.00
TO Steering Committee	Evaluation of the Towards Occupation Initiative.	€2,700.00
Youth & Education WG	Secret Music Festival Transnational Project.	€34,443.00
Youth Education Program Steering Committee	To conduct an assessment of the YEP.	€1,045.00
<b>Skills Acquisition &amp; Animation</b>		
Community Development WG	Provision of a Built Heritage, Conservation and Restoration Mentor Panel.	€6,995.00
Community Development WG	Provision of two Community Archivists and a Heritage Animator.	€110,000.00
Employment & Training WG	Animating employment opportunities in Furniture Restoration.	€17,933.00
Enterprise Development WG	Provision of an Angling Animator.	€35,000.00
Enterprise Development WG	To develop an Enterprise Conference for Duhallow.	€9,239.00
Environmental WG	To fund engineering work with communities regarding heritage & environment and oversee conservation measures.	€40,000.00
<b>Annex 1</b>		
Cronin's Rural Abattoir	Upgrading of Abattoir Facilities.	€10,488.00
TOTAL		€ 9,988,773



## Enterprise



Young Entrepreneur Richard Allen of Allenweld has grown his business with the support of LEADER, enabling him to purchase machinery to fill large orders quickly and efficiently.

### The LEADER Legacy

IRD Duhallow has a track record of creating jobs that last. The recent Technical Study into the Economic Development of Duhallow and Kerry proved that 85% of jobs created through the support of LEADER 1 are still in existence over 25 years later, and these companies are going from strength to strength. As a region, Duhallow has a rural economy that is heavily reliant on agriculture and associated industries, accounting for 15% of all employment. We have also seen a decrease in the manufacturing workforce and in the construction sector, on which, we were particularly dependent in the past. Now, our economic profile comprises primarily of micro enterprises with less than ten employees. IRD Duhallow has put in place many targeted initiatives to support the development of Businesses throughout the region and provided targeted soft and capital supports to further our region's economic advancement. Maximising our integrated approach, we work collaboratively with other agencies to ensure the best possible supports can be offered to rural enterprises. The findings of the Technical study prove that Duhallow is recovering economically and that as a region; we merit greater agency and private investment, as jobs created here prove to be sustainable and viable. However, investment into enterprise alone will not suffice, there needs to be continuing input into the development of knowledge capital and rural infrastructure to compliment this. The Working Group welcomes that the next LEADER programme will allow support to SMEs and not just Micro-Enterprises.



The winner of the Best Start Up Category in the Duhallow Business Awards was Ballydesmond based Sinead Murphy, the creator of Blumain Organics.

### From Unemployment to Self Employment

Through SICAP, IRD Duhallow provides extensive supports to those who are unemployed, equipping them with the skills and the confidence to start their own business. Complementarity between Tús, CE and SICAP means that our enterprise team works closely across programmes to support those who are looking at progressing into self employment and on to schemes such as the Back to Work Enterprise Allowance and the Short Term Enterprise Allowance or access the Enterprise Support Grant. Our enterprise team liaise closely with the Department of Social Protection Self Employment Case Officer Martina O'Connor, to support individuals in writing business plans, compiling Financial Projections and registering with the Revenue Commissioners.



Paul Brady delivered a Presentation Skills course to support business owners, who want to make that killer pitch, by giving them the confidence to stand up and speak in front of a crowded room.

Two Start Your Own Business Programmes were run through LCDP over the past 12 months. These covered the basics of getting started in business incorporating elements of bookkeeping, strategic planning, company structure, sales and marketing and taxation. In total 28 budding entrepreneurs completed the courses which were conducted by Ruth Cosgrave of Via Lutea, who is a member of the IRD Duhallow Business Mentor Programme.

Throughout the year we ran a number of other training programmes such as Presentation Skills with Paul Brady and Time Management with Frances McDonald, to upskill and support business owners in operating their enterprise.



Family based business Star Trax Studio, owned by Leo and Noreen Fitzgerald and supported by their daughter Shannon, received LEADER funding to develop their business.

### Mentoring

Ireland is currently experiencing high growth in the area of start ups, with an average of 3600 new companies being set up around the country each month. The IRD Duhallow Mentor Programme has proven invaluable to many start up and expanding business owners. Our panel of mentors have a wide variety of entrepreneurial backgrounds and experience and they provide one to one advice and guidance on the development of a business. Being a business owner can often be a lonely, cut throat environment, and our mentors are often relied on as sounding boards, providing an independent balance to business owners. Last year almost 50 businesses accessed the Business Mentoring Programme.



Based in Shrone, Duhallow Craftworkers Fleur and Jimmy Daly launched their new product, 'Killarney Candle Makers', which feature a wide range of candles aimed at the tourist market, titled Scents of Ireland and includes Irish Shamrock, Irish Turf, Irish Rising 1916, Irish Atlantic Way and Irish Christmas.

## Enterprise



Brendan McGinty, Chairman of Skillnets, Louise Bourke and Triona Murphy of IRD Duhallow and Minister of State for Skills Research and Innovation, Damien English at the information seminar at the announcement of new skillnet funding.

### IRD Duhallow Skillnet

The concept of a Duhallow Skillnet came about when the Enterprise Working Group identified a need to further develop the skillsets of Rural Entrepreneurs and their Employees. In May of this year we were successful in our application for funding through the Department of Education and Skills initiative "Skillnets" to run formal training courses to promote ongoing learning for businesses. Through this, we are promoting the preservation and growth of jobs, focusing on skills to maintain businesses and protect jobs as well as the enhancement of new skills to create new jobs. The idea behind the Duhallow Skillnet is to offer training to struggling businesses and, by providing training locally, keep the cost of travel expenses down, staff time out of work is reduced and lowers the need for overnight stays. We are applying a cross sectoral approach by offering training to a wide variety of local industries including Tourism, Retail, Craft, Food, Manufacturing, Professional Services and Construction. Planned training courses include CRM Systems and Business Practices, Occupational First Aid, Chainsaw Training, Forklift Training, Confined Space Operations and Care of the Elderly.

Duhallow Skillnet will also focus on developing the skillset of unemployed individuals who will be better able to fill knowledge gaps presented by businesses on the ground. Having surveyed 294 unemployed people (of whom 23% were long term unemployed), we have identified that 77% of individuals are willing to fully retrain to increase their employment prospects. However, 15% noted that the financial burden would prevent them and 28% reported transport to and from training centres as the major barrier to their participation. By running training locally, we will be in a position to overcome many of these issues and the training will be offered free to those who are unemployed. Our target is to have a cohort of a minimum of 17% unemployed trainees within the Duhallow Skillnet.



PSM Trish Breen from Skillnets, demonstrating the performance monitoring system "Sonrai" to IRD Duhallow CEO Maura Walsh.

### Duhallow Business Awards

The second Duhallow Business Awards saw the title of Duhallow Business of the Year being awarded to Gordon and Breda O'Keeffe from K&L Deliveries. Run in conjunction with the Corkman, the prestige of the awards has grown from strength to strength. From the large number of entries, the judges had huge difficulty to whittle it down to just 18 shortlisted finalists, who went through a rigorous interview process with



Gordon and Breda O'Keeffe of K&L Deliveries, Millstreet were presented with the Best Duhallow Business Award 2014 by distinguished guest Liath Ni Riada MEP, with Brendan Malone, Corkman; Chairman Cormac Collins; Eileen Linehan, IRD Duhallow and MC on the night; and Billy Mangan, The Corkman.



the 3 judges. A promotional supplement was produced featuring half page promotional ads on all the finalists. The Awards banquet was held in the James O'Keeffe Institute in November 2014 with over 180 people in attendance. The Award Winners were as follows

- Best Start Up:** Blumain Organic Skincare
- Best Established:** K&L Deliveries
- Best Customer Service:** Coolefield House
- Best Creative Industry:** Ceoltoiri Sliabh Luachra
- Best Women Led Business:** Voodoo Hair Design
- Best Community Enterprise:** Rathmore Credit Union



Plans are already underway for the 2015 Business Awards.

### Microfinance

A small loan can make a big difference to someone who is having difficulty getting credit. IRD Duhallow has partnered with Micro Finance Ireland to support people who wish to access Micro Finance Loans. These small business loans are from €1,000 to €5,000, and can be used for Working Capital, Set Up Costs, Equipment or Vehicle Purchase.



Kevin Curran (LEO), Patricia Messenger (C103), Aine Collins TD, Louise Bourke (IRD Duhallow) and Michael Johnson (Microfinance Ireland), who were guest speakers at the event 'Start, Promote and Grow Your Business!'



## Community Development



Maura Walsh, IRD Duhallow cutting the ceremonial ribbon to celebrate the official opening of Freemount Community Walkway and Outdoor Gym

### Community Spirit

It's only when we stop to take stock of the last LEADER programme 2007-2013 that we begin to truly appreciate the scale of what communities throughout Duhallow have achieved. Despite the numerous challenges and obstacles faced by many households in an era of austerity, rural communities have come out fighting to protect what is theirs and championed excellence in community and sustainable rural development. IRD Duhallow's Community Development Working Group has continued to demonstrate their civic leadership and have played an integral role in advocating on behalf of the 41 communities in Duhallow. LEADER signs acknowledging the funding assistance of IRD Duhallow are now dotted across the Towns, Villages and Countryside of the region. Each sign signifies a project, an enormous body of work carried out by volunteers, who have come together and collectively identified key issues and solutions in their own respective communities.



Board member Jack Roche, and Louise Bourke IRD Duhallow with members of the Meelin Sports Complex committee at the official launch of the refurbished building which was LEADER funded.

Community funded projects include the development of recreational and sporting facilities such as Newmarket Astro Turf Amenity, the refurbishment of Meelin Sports Complex, Donoughmore MUGA & Freemount Walkway and Outdoor Gym to name but a few. The younger members of the community have not been forgotten either with the development of 7 community playgrounds across Duhallow, the most recent one being in Rathmore. Likewise, the development of



The LEADER funded Community Cemetery in Ballydesmond will ensure that the people from this locality will have the choice to be buried in their own community.

outdoor gyms in the towns and villages of Donoughmore, Freemount, Newmarket and Banteer are promoting getting active amongst older generations. Ballydesmond Community were very proactive in addressing a pressing need in their community for the provision of graves for the future and established a community enterprise to expand the existing cemetery. Millstreet LTV provides a unique service to the region through their local media platform; recording local community events and activities for posterity, with the aid of state of the art LEADER funded equipment.

Strategic Planning and foresight has allowed communities like Bweeng, Freemount, Banteer, Donoughmore and many more to lead the way in Duhallow with the establishment of an integrated suite of community infrastructure. The Community Development Working Group affirm their future commitment to providing an effective voice for and support to rural communities, to optimise community assets and encourage participative planning.



CEO Maura Walsh and former Munster player Tony Buckley cutting the ribbon at Newmarket Astro Turf which was developed with the support of LEADER. Also pictured is Michael Moynihan TD; Aine Collins TD; Deputy Lord Mayor Cllr Timmy Collins, members of Newmarket Development Association and Fr. Corkery. Community Enterprises such as this one, ensure that vital services and facilities are made available to people in rural areas.

### Strong Local Governance

The Board of IRD Duhallow is based on collaborative local governance; whereby community representatives, social partners, statutory agencies and the Local Authorities in Cork and Kerry come together to successfully deliver a range of programmes and functions to promote the economic and social development of Duhallow. These horizontal structures ensure that IRD Duhallow is adaptive, effective and delivers value for money on the ground. Batt Casey, Kiskeam Development Association and Brian Kelly, Rathmore Development Association were elected to the Board in June 2014 to represent Western Duhallow. Tributes were made to the two outgoing members Eugene O'Connor (Boherbue) and Collette O'Connor (Cullen) for their valuable contribution to the Board of IRD Duhallow.



The official opening of Rathmore Community playground was officiated jointly by Mayor of Kerry, Seamus Cosáil Fitzgerald & Maura Walsh, IRD Duhallow.

## Community Development

### Community Signage

The Community Development Working Group continues to promote the importance of both regional and local identity. With the assistance of IRD Duhallow's LEADER programme and Cork/Kerry County Councils 63 Village signs were erected in Duhallow in 1996 highlighting the Duhallow Trail to tourists. These 'welcome' signs needed to be replaced as a result of structural damage and wear and tear over the years as weather had caused the signs to fade, rust, graffiti etc. Furthermore, a number of communities did not receive this signage as they were not part of the Duhallow Trail back then. With the assistance of IRD Duhallow's LEADER 2007-2013 programme, the 41 communities in Duhallow received 119 new distinctive signs, which have been uniquely designed to strengthen the shared identity for communities in the region and further enhance opportunities for Tourism development.



The 'before and after' pictures of the distinctive Duhallow Community Signage clearly illustrates the fresh new design

### The Importance of Animation in Rural Development

Throughout May, a number of community consultation meetings were held to evaluate the impact of LEADER 07-13 and to engage with communities on the ground about potential key projects for their area. These meetings proved the tangible, positive impacts of LEADER on the ground in communities, and the feedback received will be used to inform the next strategic plan. The independent evaluation carried out by Mary Immaculate College and Cape Consultancy shows communities supported by LEADER since 2009, have undertaken 62 infrastructural projects, and are currently involved in delivering 72 different services. This is largely attributable to the work undertaken by Development Officers and Animators. LEADER has an important role to play in supporting volunteers through training, animation, networking, mentoring and advising, and more resources need to be devoted to these end.



CEO Maura Walsh, Mayor of Killarney John Joe Culloty and Chairman Cormac Collins officially opening the LEADER Funded Gneeveguilla Teach Fáilte.



Eugene McAuliffe and Colman Jones trying the new outdoor gym equipment in Lismire.

### Discover Duhallow... A Day of the Region

A Day of the Region is a transnational community project, which has for the last 3 years been a resounding success, with communities actively embracing the concept of celebrating the essence of life in Duhallow and showcasing and sharing what Duhallow has to offer in the way of culture, sport and tourism. 2014 saw 9 consecutive weeks of over 40 events taking place across the region with events varying from community festivals, carnivals, guided walks, bird watching trips, angling and traditional seisiúins and demonstrations. This initiative saw substantial voluntary hours from locals without which, it would not nearly have been the success it was. As part of this project community representatives visited our partners in Dumfries and Galloway LEADER in Scotland to share and learn from their experiences. The region of Dumfries and Galloway is very similar to Duhallow with a heavy reliance on agriculture, small rural isolated towns and villages, as well as a worrying issue of outward migration. Likewise, a delegation of Scottish community representatives visited Duhallow last July where they participated in events in the communities of Bweeng, Kanturk, Donoughmore and Lismire. Through this initiative community festivals such as Kanturk Wild Boar Festival and Cullen Harvest Festival were supported to grow over the last 3 years and it is encouraging to see such community involvement in the revival of festivals in rural towns and villages.



Children in Bweeng enjoying the festivities at the Bweeng Day of the Region Summer Festival



Representatives from Dumfries & Galloway LEADER Group received a warm welcome at the Donoughmore Carnival as part of The Day of The Region Initiative.



# Local & Community Development Programme



Members of the Saoi Network officially launching Bealtaine 2015 which was funded through LCDP.

## Local & Community Development Programme

LCDP came to a completion in March of this year. The programme was a follow on from the Social Inclusion programme, and while the budget was modest, the importance of the programme cannot be understated. LCDP targeted those most at risk in our community, supporting those furthest from access to education, training and employment, and those at highest risk of social exclusion. In Duhallow, we provided a suite of services and initiatives to meet the needs of the programme and the Duhallow region.

Training programmes were delivered locally, tailored to meet the needs of the Duhallow community, bursaries were awarded to support people to complete education, the Focal Farmer Programme provided much needed financial support to low income smallholders, through AI, Milk recording and Soil Sampling as well as training on farm accounts bookkeeping etc. All these supports helped the small family farm to continue to survive.

Four of the five secondary schools in Duhallow have received support over the past 10 years for afterschool homework support through LCDP, to tackle early school leaving and educational disadvantage.

Networks were supported for Duhallow Carers Groups, our Parenting Alone Group, and the Saoi Network for the elderly, and the bereavement support and domestic violence initiatives were supported under this programme as well as the Towards Occupation programme for people with mental ill health.

LCDP afforded us the opportunity to support small business ideas from those distanced from the labour market as well as supporting community and social enterprises in Duhallow.

LCDP also provided animation and capacity building support to the communities through our staff, who conduct the many hours of one to one supports with the target groups of the programme. Duhallow has long highlighted that it does not have a Local Employment Service,



Rose Drew teaches the art of making delicious chocolate biscuit cake to members of COPE and the T.O. Group.

and our Job Centre meets the needs of Duhallow Job Seekers and Employers, providing CV preparation, Interview techniques and other supports to individuals and business.

## SICAP

In April of this year, the LCDP successor programme, the new SICAP programme was rolled out, and IRD Duhallow was successful in securing a contract for the Cork area of Duhallow from North Cork LCDC and for the Kerry part of Duhallow from Kerry LCDC. SICAP or the Social Inclusion Activation Programme, aims to tackle poverty, social exclusion and long-term unemployment through local engagement and partnership between disadvantaged individuals, community organisations, public sector agencies and other stakeholders. The programme strives to engage with the most difficult to reach in the most disadvantaged areas, with a focus on youth and on interventions to address youth unemployment, for the harder to reach youth. SICAP also strives to effectively contribute to citizen engagement in line with national policy and hopes to add value to public services by ensuring it fills important local gaps in provision and by preparing disadvantaged people to take up mainstream services.



Linda Murphy proudly holding up her finished product completed as part of the LCDP funded craft classes.



IRD Duhallow Chairman Cormac Collins making a presentation to John Breen from Kerry County Council on his retirement from the Board of IRD Duhallow.

It was disappointing then, for Duhallow to endure a 48.5% cut on its SICAP budget from LCDP, which had also been enduring cuts year on year since 2008. This has left the programme grossly underfunded and left us with no option but to drastically reduce and in some instances completely remove some supports to the Duhallow Community. The Afterschools Homework Support clubs in the schools has been withdrawn as have the direct subsidies to Low Income Farm families. We continue to support these target groups to the best of our abilities given the limited resources available.

We have highlighted the plight of Duhallow to the Department, and are hoping that 2016 will see some improvement in the budget allocation to the region, given that LEADER in Duhallow has also been cut albeit by a much larger 70%.



RSS participant Eileen Moynihan works with the Care and Repair team, matching up volunteers with older people who are looking for someone to do odd jobs.

# Local Community Development Programme

## FUNDS COMMITTED TO PROJECTS JANUARY TO DECEMBER 2014

GOAL	PROJECT PROMOTER	DESCRIPTION	COMMITTED
<b>Goal 1: To promote awareness, knowledge &amp; uptake of a wide range of statutory, voluntary &amp; community services</b>	Information Dissemination Bereavement Support Group	IRD Duhallow Monthly Newsletter Bereavement & Loss Phone Bereavement Meetings / Postage	€8,453.30 €201.72 €60.00
	Domestic Violence Support Group	Domestic Violence Helpline Phone Meetings/Postage Seminar "From Victim to Victory"	€202.98 €296.00 €902.00
<b>Goal 2: Increase access to formal &amp; informal education, recreation and cultural activities &amp; resources</b>	Adult & Second Chance Education	Upcycling/Recycling Training Course Introduction to Accounts/Bookkeeping Mary O' Connor Bursary Michelle Casey Bursary Gerald Murphy Caroline Kiely John Peter Moynihan Karen Maher Stephen Dunleavy Karen Wallace Mary O' Brien Breda Vaughan Linda Mc Auliffe David Mullane Marie Collins	€1,098.00 €1,038.00 €500.00 €500.00 €694.00 €500.00 €500.00 €500.00 €220.00 €444.31 €420.00 €500.00 €430.00 €455.00 €200.00
	Empowerment of Youth	Newmarket Basketball club Youth Consultation Meetings Meetings Confidence in Creative Speaking Course Newmarket Dance Group Careers Exhibition 2014 Gneeveguilla Basketball Club	€1,625.00 €226.01 €169.51 €1,464.80 €900.00 €649.71 €390.00
	Preventing Early School Leaving	Literacy Support Programme Spring - Summer 2014 Scoil Mhuire Afterschools 2014 St. Lachteens Afterschools Programme Scoil Phobal Afterschools 2014 Boherbue Comprehensive School Literacy Support Awards Nights 2014 Literacy Support Programme 2014 Coping with Dyslexia Seminar	€5,000.00 €1,584.00 €1,120.00 €2,144.00 €1,560.00 €607.50 €2,654.04 €464.00
	Social & Personal Development	"Peer Support Education Programme" Public Speaking Information Evening on Internet Safety	€90.01 €923.73 €752.00
	Summer Camp	Laugh & Learn Summer Camp	€753.00
	New Communities & Migrant Workers	Multicultural Christmas Days Drishane Migrant Centre	€1,680.00 €600.00
	Resources to Groups	Gneeveguilla Parish Centre Tureenahill Grotto Knocknagree Fairfield Donoughmore Comm Council Cullen Garden of Remembrance Towards Occupation sewing machines and art equipment	€727.55 €250.00 €637.00 €290.00 €200.00 €1,038.83
	Supporting Volunteerism	Cork /Kerry Volunteer Centres	€4,000.00
	Job Centre	Meetings/Newspapers Job Search Strategies & Interview Skills	€320.55 €3,986.00
	Preparation for Employment & Enhancing Employability	Information Seminar for Businesses on Employment Schemes Recognition of Learning Ceremony 2014 Intermediate Computer Training T.O. Transport Meetings	€100.00 €672.02 €3,140.00 €4,398.73 €6.40
	Enterprise Supports	Focal Farm AI Focal Farmer Milk Soil Sampling Farmers Market "From the Flower to the Jar" Beekeeping workshop XL Vets Info Seminar on calf birth to weaning & fertility Meetings Safe Tractor driving skills "Celebrate "Enterprise T O' Sullivan & M Enright Start Your Own Business Course Visit to The Farm Grenagh Boom Sprayer Course Women in Agri Conference Millstreet Dairy Show Trip to Dairymaster XL Vets Info Seminar on challenges of Dairy & Beef	€9,748.36 €6,125.84 €1,772.49 €576.05 €357.50 €190.26 €464.84 €606.00 €1,200.00 €1,568.00 €380.00 €150.40 €355.00 €100.00 €125.00 €128.00
	Community Enterprise	Social Mission Organisation Business Plan DCFS	€2,799.81 €200.00
	Craft & Enterprise Network	Meetings Enterprise Awards	€28.75 €1,000.00
<b>Goal 4: Promote engagement with policy, practice and decision making processes on matters affecting local communities</b>	Issue Based Fora	Carers Meetings Pal Meetings Meetings Golden Eagle Trust Ltd Car Maintenance Night for Pal Personal Development Night for Women "Life Skills" programme Carers outing Pal Outing PAL Christmas Outing Carers Christmas Outing PAL Cookery Night Pension & Budget Change Info Seminar 1st Aid Fundamentals	€239.85 €28.75 €528.55 €750.00 €96.00 €450.00 €360.00 €270.00 €290.00 €500.00 €500.00 €303.00 €200.00 €453.30
	Empowerment of Older People	Care & Repair Phone/Meetings Kanturk Active Retired New Group Set Up Súgán Chair Making Course Hip & Knee Replacement Seminar Creative Writing Course Boherbue Gramophone Circle Craft Training Saoi Meals	€490.60 €129.20 €240.00 €342.00 €1,300.00 €265.54 €594.21 €700.00
	Empowerment of People with disabilities	Basic Sign Language Classes	€1,015.00
TOTAL			€101,162.00



## Equality and Social Inclusion

For many years the Equality Working Group has been striving to counter disadvantage and promote equality and social inclusion to create fairer, tolerant and more caring communities, where everyone can participate equally and have the opportunity to fulfil their potential. The Working Group continue to implement equality focused initiatives, activities and projects designed to encourage and sustain more equal participation of people in civic, social, economic and political life both at local and national level. However, the deep cuts to all of our budgets are having severe cumulative implications for projects at a time when new and changing demands are being identified.



Emma Sherlock of the Duhallow Boxing Club has had huge success on the Boxing Circuit this year. Watch out Katie Taylor!



The Multicultural Christmas events continue to be fun filled where the children love the opportunity to meet with Mrs. Claus and Mr. Claus.

extensive consultation process with stakeholders and the Immigrant community of the county in response to the National Action Plan Against Racism. On reaching the end of its lifespan in December 2012, a decision was made to extend the timeframe of the strategy by 2 years to the end of 2014. This has now come to an end and IRD Duhallow is continuing its efforts of reaching out to the immigrant population through other funding streams where possible.

A Migrant Youth Leadership Programme was delivered to 12 young people in Millstreet Accommodation Centre by Love and Care for People. Migrants can be faced with social exclusion, discrimination and loneliness. Language and cultural practices can be a barrier when trying to integrate and socialise with others. As a result, a four session leadership and empowerment programme was developed to try and enable these young people to develop the skills, confidence and action plans to be effective leaders. The 12 attendees were aged 10 to 16 and hailed from Pakistan, South Africa, Malawi, Swaziland, Ireland, Democratic Republic of Congo, and Nigeria.

Three Multi-cultural Christmas Events were held in Rathmore, Kanturk and Millstreet which gave adults and children the opportunity to find out more about international traditions and cultures. Over 150 children and their families participated and once again we were grateful to the RSS participants both current and retired who provided Santa and Mrs. Claus each night. These events are always very successful in bringing the community together.

### Disability Supports

A very successful Life Skills training programme was delivered in association with Aware. This programme was based on the principles of Cognitive Behavioural Therapy (CBT). CBT focuses on thinking and behaviour and has been shown to be an effective treatment for anxiety, stress and mild to moderate depression. When a person is experiencing depression or facing challenging life situations they may think and behave in unhelpful ways. CBT helps the person to make practical life changes in these areas, which can help improve how they feel and also reduce some of the symptoms associated with depression, stress and anxiety. Over 30 people took part in this 6 week training programme with very positive feedback being received.

Sign Language Training continues to be requested by the public and in September 2014 IRD Duhallow organised a seven week Basic Sign Language Class with all 13 participants successfully completing the training programme. The programme was suitable for individuals seeking to develop skills in Irish Sign Language, for effective communication with deaf and hard of hearing relatives, employees and customers in a variety of situations and settings. Modules included the Deaf Community, Deaf Culture, Deaftech – alarm, video caption reader etc. Other topics included Vocabulary, Grammar, Expressions and subjects such as family, numbers, hospital and group work including conversation and fun stories. The feedback received was extremely positive with a demand for more training in this area.



Youths from Millstreet Accommodation Centre enjoy a field trip to Cork City as part of the Migrant Youth Leadership Programme. As part of their trip they visited Crawford Art Gallery.



Maureen O'Riordan, IRD Duhallow Vice Chair Anne Maria Bourke and Angela Cross Daly presenting the proceeds of their coffee morning to Lucia Power of Acquired Brain Injury Ireland in the new Community Dining Area.

On Friday May 22nd, Ireland voted in two Referendums relating to equality issues. The Thirty Fourth amendment of the Constitution to extend civil marriage rights to same-sex couples was approved. However, the thirty fifth amendment of the Constitution to reduce the age of eligibility for the office of President was rejected. The results of both referendums were emphatic. Ireland now joins twenty other countries where same-sex marriage has been made possible. Ireland is the first country in the world to do so by a vote of the people. The working group were delighted with the large turnout for the election having organised a voter participation seminar in conjunction with the Venetian Partnership.

### Supporting Integration

Kerry Integration Strategy (2010-2012) was developed through an

## Equality and Social Inclusion



Basic Sign Language training helps to raise awareness about the need for improved communication with deaf and hard of hearing relatives, employees and customers.

### PAL

Census 2011 showed that 1 in 8 people live in a one parent family and that 1 in 4 families in Ireland are one parent families. Lone Parent households continue to experience the highest level of deprivation. The PAL group aims to provide support to one parent families incorporating both the parents and the children. The group regularly meets to discuss issues faced by lone parents, providing peer support and mentoring. PAL also organises outings for one parent families and encourages the children to mix together in a social setting.

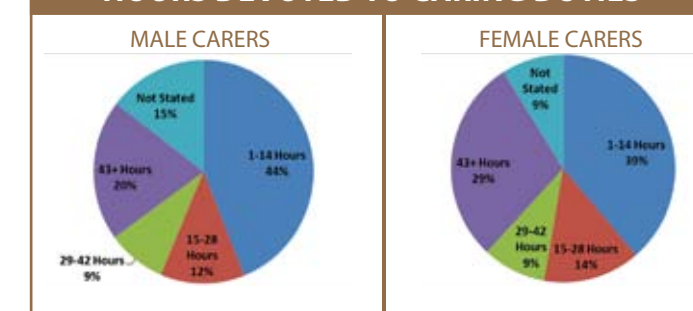
### Carers

With an ageing demographic in Duhallow, it means that correlatively Cares represent a very sizeable and growing cohort of the population of the region. Almost 1,500 persons are classified as a home-based carer. The following pie-charts show a gender breakdown of the hours carers in Duhallow devote to those who rely on them.



The PAL group visited Imagine at Fota for their Christmas Outing, where the children had a wonderful Christmas experience.

### HOURS DEVOTED TO CARING DUTIES



The pie-charts show that many carers work exceptionally long hours, offering a huge cost saving to the Exchequer for very little State recognition or appreciation.

The Duhallow Carers' Support Group represents carers, provides a social and supportive outlet for Family and Voluntary Carers and enables member to acquire new skills, information and knowledge. The group also partakes in advocacy and lobbying on issues faced by Carers of the region. Throughout the past year they participated in National Carers Week by hosting a Coffee Morning, promoting awareness of the work of Carers, and had regular training sessions including first aid, personal development, mindfulness and stress management.



The Duhallow Carers Group presenting the proceeds of their coffee morning to Geraldine Lucey of Cope Kanturk.

### Domestic Abuse Support

Domestic Abuse continues to be as prevalent as ever in all sectors of society in Duhallow with young and old, male and female, rich and poor experiencing and being subjected to horrific abuse. Most recent statistics continue to show that nationally 1 in 5 women and 1 in 16 men are still at risk of experiencing some form of domestic abuse at some stage in their lives. The IRD Duhallow Domestic Abuse Support Initiative is now 4 years in existence and

continues to provide direct support through the provision of a helpline and one to one sessions to those experiencing all forms of abuse. We remain one of the only initiatives nationally which supports both male and female victims. Awareness raising is a significant component of our service and annually we take part in the International 16 Days of Action against Domestic Violence. In 2014 a seminar entitled "From Victim to Victory.... How to successfully overcome and cope with challenges in everyday life" was held, with guest speakers Psychotherapist Dr Fergus Heffernan speaking on how to cope with stress and anxiety in everyday life while Eilish O'Carroll of the TV show Mrs Browns Boys spoke on how she overcame difficulties in her life including being a victim of domestic abuse. This seminar focused on the positive ways of dealing with the challenges of everyday life and provided the public with tools they can use to make life easier. Our service is run on a daily basis by our locally trained volunteers who provide an invaluable service.



Dr. Fergus Heffernan gave a talk entitled "From Victim to Victory..." as part of Duhallow's International 16 Days of Action against Domestic Violence.



Trudy Taylor teaches John Fitzgerald the art of sewing, as part of the T.O. craft classes.



## Employment and Training

Employment levels in Ireland are moving in the right direction but we have long way to go before we reach the peaks of pre-crisis times. At its height in Quarter 3, 2007 Ireland employed 2,169,600 people; in Quarter 1 of this year there were 1,929,500 people in employment. Amongst the sectors that are experiencing increases in employment are the construction, financial, insurance and real estate sectors, which accounted for 59% of the increase. Whilst people are returning to work in significant numbers, employment opportunities in Duhallow still lag well behind those available in larger urban centres.



Brendan Madden of GPA delivered a module of the Fast Forward to Work Programme which included modules on Accredited Bookkeeping and Payroll.

Despite the enormous cuts to the Social Inclusion funds, the Employment and Training working group has devised a number of ambitious strategic objectives for our work with the unemployed. The objectives and actions set out in the new plan for both Cork and Kerry will offer a combination of interventions which are designed to achieve specific impacts in terms of local jobs, improving skills provision and increasing activation of the unemployed. A key part of their work is the engagement with stakeholders and local agencies including Cork County Council, MABS, DSP Activation Office, DSP Community Services Office, Kanturk Chamber of Commerce and DSP Community Welfare Office. The working group welcomed the arrival of Skillnets to Duhallow. This programme will consolidate our efforts in delivering training locally and will also assist us to improve our linkages with local employers. There is a target of 39 unemployed participants who will be supported through a range of Skillnets training courses which will account for 17% of trainees.

### Job Centre

The Job Centre focuses its efforts on local inclusion whereby it offers a free Employment and Training service for people within the Duhallow area. The service includes provision of practical support, advice, guidance and information particularly relating to employment, training and returning to work. Assistance is provided in relation to helping clients write their CV and cover letter and also helping clients to keep their job skills up to date through accessing training programmes both delivered by IRD Duhallow and other agencies. Additionally local employers who may have job vacancies are supported by offering a shortlist of local candidates from our database of Jobseekers ensuring a smooth, accurate and confidential recruitment service.

The focal point of the Job Centre is about targeting ways which improve participation of people who are otherwise excluded. There are often multiple barriers to effective participation so it means that a combination of interventions is required. In particular the Job Centre looks at providing a person centred approach.



IRD Duhallow delivered a four day workshop to individuals on effective job seeking skills and interview preparation.

### Adult and Second Chance Education

For a number of years IRD Duhallow has offered grant aid assistance to individuals who as a result of the peripheral rural location coupled with multiple disadvantages such as being short/long term unemployed, one parent family, low income smallholder etc. may have found it difficult to access further or third level education. In 2014 alone, IRD Duhallow awarded 13 Adult/ Second Chance bursaries through LCDP. The areas of study ranged from Digital Marketing, Business and Computers, Counselling, Fine Arts, Train the Trainer, Anatomy and Physiology, Nursing, I.T., Culinary Arts, Medical Secretary training, Complimentary Therapy and Travel and Tourism. This stream of funding has proved to be critical for mature students, some of which do not qualify for third level maintenance grants and are therefore struggling to advance their chances of completing further and third level education with the view to improving their employment prospects.

The Employment and Training working group were very disappointed to learn that the provision of bursaries of financial assistance to individuals under goal 2 and 3 to undertake educational/ training courses is not eligible under the new SICAP programme. We know from our experience of supporting adults to return to education

that the real value and difference this financial assistance makes for people is the ability to offset the shortfall between living expenses and further education.



Entering the digital era, Noreen O'Regan and Monica Kelleher practice their Skype on a Basic Computer Training Course. Monica went onto successfully complete a 14 week accredited Intermediate Computer course.



Tús participant, Jenny Murray, was one of our tutors delivering Basic Computer Classes under BenefitTIII.



Jacqueline Gilligan received a bursary from LCDP. She recently graduated from NUI Galway with a Degree in Early Childhood Studies.



IRD Duhallow Board Member John Linehan and Staff Member Marie Fleming graduated from UCC with a degree in Rural Development.

## Employment and Training



Tús and RSS participants put a huge amount of time and effort into supporting the delivery of BenefitT programme.

### BenefiT 4

The BenefitT IIII Programme is a Government grant initiative providing funding to third sector and not-for-profit organisations for the provision of digital literacy training. The scheme is funded through the Department of Communications, Energy and Natural Resources. The core objective of IRD Duhallow's programme is to encourage more people online – focusing in particular on harder to reach groups. Since the programme was introduced in 2013 we have provided basic computer training to over 300 people from all over Duhallow – helping people to learn skills, use the Internet and access online resources. The programme also supports wider objectives such as encouraging and helping people to use online public services such as Motor Tax.ie. Initial targets were exceeded due to the high level of demand for this type of training in the region. The success of our programme is also largely thanks to the support given by participants on our Tús and RSS schemes who help to deliver the training objectives to a high professional standard. Their commitment and effort are greatly appreciated. This was reflected in the learner evaluations in which 99% of the trainees stating they would be happy to recommend the training to a friend.



16 participants successfully completed the QQI level 5 Special Needs Assisting Course.

### Employment Specific Training

IRD Duhallow supports a range of training programmes that compliment or add value to mainstream education provision. This year saw the delivery of a number of training programmes funded through LEADER 2007-2013 and LCDP such as Fast Forward to work including an accredited bookkeeping and payroll module; Accredited Taxation for beginners, Rural Employment Planning and Opportunities Programme; Accredited Intermediate Computer Training, Accredited Professional Management Training, Furniture Restoration Training, Accredited Supervisory Management Training, Accredited Special Needs Assisting Course and Accredited Chainsaw and Cutting Equipment programme to name but a few.



As Good as New! Mary T McCarthy Gneeveguilla presents her handiwork, which she completed as part of the Upcycling/Recycling training programme.

The working group organised Social Mission Organisation Business Planning programme to lead participants through a process where each business left with a fully completed business plan.

The Professional Manager Award which was delivered on behalf of the Institute for Managers of Community and Voluntary Organisations in Ireland Ltd by tutors from the Carmichael Centre for Voluntary Groups. This was a bespoke training programme for Managers of Social Enterprises whereby participants received the opportunity to assess their current capabilities against recognised occupational standards. The programme also gave participants the time to focus on their professional development and importantly challenged their current way of working.



Maura Walsh, CEO of IRD Duhallow along with Dr. Tony Crooks Director of IMCV present certificates to the participants who completed the Professional Manager Award.

### Adult Education

In 2014, IRD Duhallow hosted a Recognition of Learning ceremony to commend those individuals who successfully completed courses throughout the year. The event proved to be a huge success with over 250 individuals receiving certificates over two nights. We feel that it is important that the participants on these courses are given the opportunity to recognise the training that they have received and therefore the event proved very positive.



The 14 Week Supervisory Management training programme is always a hugely popular course for people looking to upskill and increase their career prospects.

### Internships and Apprenticeships

Undertaking a work placement can offer individuals real benefits for progressing in their chosen career. IRD Duhallow has a history of providing candidates in many different fields, an opportunity to gain professional experience in their area. The benefits for candidates include practical experience of the industry that they wish to work in; improved job opportunities; experience of teamwork, the development of interpersonal skills, awareness of current developments in the sector and also a chance to secure employment. James Buckley started work in IRD Duhallow as a Jobs Bridge Intern, he then went on to successfully gain full time employment as an Archive and Heritage Co-ordinator.



Maired Enright completed work experience with IRD Duhallow.

Paudie O' Connor worked on our Furniture Revamp Project and Ryan Hyslop gained work experience on the Life Project, both participants were undertaking a 15 week Deciding Your Future course which entailed five weeks of work experience with IRD Duhallow. Shelly O'Hanlon who is studying Geography and Maths at Mary Immaculate College worked on the Life project where she gained valuable experience in sediment sampling, surveys and school visits.



Participants of the QQI Level 5 Taxation Training course receive their certificates which was funded through LEADER 2007-2013.



## Youth and Education

### Literacy Support Programme

The Dyslexia Association of Ireland recently conducted a survey proving that 66% of parents are dissatisfied with the level of support provided by the government in relation to assisting families with dyslexia. This results in early school leaving and low self esteem for children, who feel inadequate because of their learning difficulty. The survey went on to conclude that 62% of parents report being unable to access appropriate supports for their children due to lack of funds. The IRD Duhalloy literacy support programme aims to provide affordable supports for children with learning difficulty as a targeted measure to combat early school leaving.



*Touch Type Read and Spell has proven hugely successful in teaching children with literacy issues how to type, whilst also improving their spelling.*

This is done in a number of different ways:

### Literacy Workshops

Our literacy workshops comprise of small classes of children who benefit from the expertise of our DAI registered tutors Sinead Guiney and Noirin Murphy. Our classes focus on the key problem areas for children with dyslexia and dyspraxia namely Reading, Writing, Spelling, Memory Work and Sequencing. Typically we have two terms September - December (12 Weeks) and January - May (16 Weeks).



*Students of Scoil Mhuire Kanturk, highlighting the benefits of LEADER in Making Duhalloy a Great Place to Live, as part of #yoloduhallow.*

### TTRS

Touch Type Read and Spell (TTRS), is a computer programme which comes highly recommended for children with Dyslexia and Dyspraxia by Educational Psychologists. This multi sensory course teaches children how to touch type using patterns based on the Alpha and Omega spelling method, promoting positive learning and spelling, and is run in the computer lab in the JOK.

### Supports for Parents and Teachers

Twice yearly our tutors hold Parental Advisory Clinics providing updates on the children's progress, and also give helpful tips and advice for parents to follow at home. The Dyslexia Association of Ireland survey also showed that 97% of teachers agree that they need and would benefit from training on dyslexia. To provide this additional support we ran a number of helpful clinics throughout the year including Ipad and Apps Training for children with literacy difficulties by James Northridge of Urability.com. We also hosted a seminar on the free software Xmind, which is recommended for use by Children and Adults with Dyslexia or Dyspraxia. This was facilitated by Deirdre Madden of UCC Disability Support Services.



*Modern technology has opened up huge opportunities for children with literacy issues. The objective of the Urability Ipad & App seminar was to help teachers and parents understand how to harness technology to support children with Dyslexia or Dyspraxia.*

### Literacy Awards

At the end of each year, we host our annual literacy awards for all the children who participated in our literacy support programme. To promote children's confidence and self esteem, the awards are held in a 'Show and Tell Format', as a celebration of each child's individual skills and talents. Youth and Education Chairman Don Crowley presented each child with a certificate and trophy celebrating their outstanding achievement for 'Excellence in Literacy'.



*Some of our High Achievers at of the Literacy Programme Show and Tell Night, with Youth and Education WG Chairman Don Crowley, Staff Liaison Louise Bourke and Tutors Jacinta Carroll and Sinead Guiney.*

### Laugh and Learn Summer Camp

The Laugh and Learn Summer Camp is held each year in July, and it's a mix of learning and fun. Specifically aimed at children with Dyslexia or Dyspraxia, each morning and afternoon children have formal classes, but the rest of the day is filled with educational activities such as baking, treasure hunts and art. All our classes are led by tutors who have undertaken special training with the Dyslexia Association of Ireland.

### Boxing Club

The Duhalloy Boxing Club has grown from strength to strength since it was first established by the Youth and Education Working Group. The club now has 140 members (60% Male and 40% Female) and the range of ages varies from 8 years right up to adults. Recently, the World Champion Spike Sullivan has come on board as a club ambassador and has acted as mentor to many of the young promising athletes, who have achieved a range of County, Provincial and National Titles.



*Duhalloy Boxing Club members Conan Walsh and Darren O'Keeffe proudly displaying their County Medals.*

## Youth and Education



*Talking their way into the Prizes! Rathcoole NS Public Speaking Team spoke were victorious with their topic 'Should Fast Food Come with Warning Labels.' Pictured alongside Louise Bourke, Brigid Ide Walsh, Helen O'Sullivan and guest judge Liam O'Flynn.*

### Public Speaking for Primary Schools

Speaking in public can be a daunting task even when you're passionate about your cause. Learning communication skills helps young people navigate their world and prepare for workforce, civic and the family roles they will assume as young adults. IRD Duhalloy's Youth and Education Working Group recognise the importance of these skills and has been coordinating a Public Speaking Competition for Primary School children with the past 7 years. The teachers prepare the fifth and sixth class students to deliver a speech as part of a team of four and help them to develop the skills to communicate ideas to others, organise, set goals and do the necessary research. Both Parents and Teachers have indicated that the competition has helped the students in confidence-building and has also assisted them to develop and improve their research skills. This year 10 schools took part and St. Brendan's National School, Rathcoole were the overall winners.



*Helen O'Sullivan presenting Darragh Kelleher from Rathcoole N.S. with the Best Speaker Award at the IRD Duhalloy Primary School Public Speaking Finals 2015.*

### Confidence in Creative Speaking Programme

IRD Duhalloy delivered a two day course in "Confidence in creative speaking" for students from the five secondary schools in the region. It was identified that a programme should be developed for students who may not be confident in public speaking. This two day workshop was therefore targeted at students who would not usually put themselves forward for this type of programme with the aim that the participants will gain confidence in public speaking and interacting with groups, develop key life skills in holding different conversations in different contexts, while also learning the communication skills which can contribute to making new friends. 25 students participated and found the programme very worthwhile.



*Tutor David Dunne, does circle time with secondary school students on the Confidence in Creative Speaking course*

### Young Scientists

The success of local Duhalloy youths; Eimear Murphy and Ian O'Sullivan in winning the BT Young Scientist Award was celebrated at a special reception in the James O'Keeffe Institute. The event was held to acknowledge the pair from Colaiste Treasa, their parents and their teachers in what is a wonderful success. The research they conducted was highly innovative, titled; "Alcohol Consumption: Does the Apple fall far from the Tree", and, proved that there is a significant link between



*The Board of IRD Duhalloy making a presentation to Eimear Murphy and Ian O'Sullivan in recognition of their outstanding achievement in winning the BT Young Scientist Award.*

parents drinking habits and that of their children. IRD Duhalloy fosters young scientists through the LIFE Programme, encouraging young people to be 'Nature Detectives'.

### Annual Careers Exhibition

IRD Duhalloy hosted its annual Career Exhibition in the Edel Quinn Hall, Kanturk for all Secondary Schools in Duhalloy. The annual Fair provides students with expert advice on further and higher education courses and career choices. The event is of great benefit to students who are making decisions with regard to their CAO and moving forward to University, Apprenticeships and other directions. Over 20 universities and Third Level Colleges from Ireland attended this year alongside representatives from An Garda Síochána. A Guidance Counsellor was also available to students who wished to explore options in greater detail with regard to eligibility requirements for courses etc.



*The Careers fair allows students of the region to explore potential career options and get advice from Colleges such as the University College Cork's Midwifery Department.*



*Students of Colaiste Treasa reading up on their future careers at the Duhalloy Career Exhibition.*

### Internet Safety

Over half of children aged 8-10 and more than 75% of 10-16 year olds use the internet daily in Ireland. Over 45% of Ireland's young people are also using their mobile phones and gaming consoles to access to the internet which is well above the European average. As a result, parents and teachers now have to cope with a new and unknown danger of cyber abuse. As this rate of usage continues to rise, mediating children's internet and phone activity is often a difficult task.

In response to this issue, a seminar was held for parents and teachers to help provide an insight into how social media is used by young people and how it can unknowingly become dangerous whilst also giving parents advice on practical safety measures which can be used to protect young people while online. Guest speaker on the night was Dr. Maureen Griffin, who is a Forensic Psychologist and has experience in delivering many presentations in relation to social media and internet safety to many schools all over the country.



*Forensic Psychologist Dr. Maureen Griffin with board member Cllr Melissa Mullane at the Internet Safety Seminar.*



## Equality for Women



Course attendees on the QQI Accredited Reception and Frontline Office Skills training course.

The Women and Childcare Working Group recognise that women who are living in rural areas may experience isolation and a lack of opportunity at some stage, if not throughout their lives. Economic dependence is often compounded by the problems of distance from services and amenities. Since IRD Duhallow established the Women and Childcare Working group in 1997 it has continued to focus efforts on the issues that affect the lives of women in Duhallow and acts as a strong advocate for the positive development of women's rights and opportunities. The Duhallow Women's Forum supports and represents 17 women's groups throughout the region. These groups are managed by members and are thus driven by 'bottom' up agendas. They provide a safe place for women experiencing different forms of social exclusion to come and learn, as well as to build links with other women that ultimately lead to being part of a collective identity.



I.T. training is essential because technology is developing continuously and at a fast rate. Keyboard skills was delivered through the Equality for Women Measure in an effort to combat this.

The Duhallow Women's Forum is affiliated to the National Women's Council of Ireland (NWCi) which is the leading national women's membership organisation seeking equality between women and men, founded in 1973. Our affiliation to the NWCi has given us a voice at National level to promote rural women's rights and equality. Women's contribution to farming goes largely unnoticed and unrecognised in statistics and policies. Many women who work on the family farm and spouses of business owners (mainly women) are treated as 'relatives assisting'. Although working in the family business 'relatives assisting' cannot make PRSI contributions, which would entitle them to age contributory pension and maternity benefit. Therefore, many women who are spouses of business owners, including farmers are financially dependent on their husbands and rely on a qualified adult state pension that goes directly to their husbands for them.



A Career Management Workshop provides participants with key skills in relation to CV Preparation and Interview Skills. This workshop was funded through the Equality for Women Measure.

In April, the Children and Family Relationships Bill was signed by President Michael D Higgins, which represents the most important reform of child and family law for a generation. It is underpinned by recognition of the need to provide legal protection for children and families that reflects the reality of their lives and the diversity of family structures in Ireland.

The forum continues to support the TORL (Turn Off the Red Light) Campaign. In 2014, Minister for Justice and Equality Frances Fitzgerald published the Heads and General Scheme of the Criminal Law (Sexual Offences) Bill 2014, which included stronger sanctions, aimed at protecting children from sexual exploitation; child pornography and online grooming. In addition there were provisions to criminalise the purchase of sex. We are currently awaiting the publication of the full bill.



Deirdre Green practices how to perform CPR on an adult as a result of a 1st Aid Fundamentals workshop delivered by the Duhallow Women's Forum.



Glash community display their array of crafts following receipt of funding to complete an eight week craft class course.

### Positive Actions through the Equality for Women Measure

The Equality for Women measure is a well targeted, positive action measure that aims to redress the imbalances that exist between women and men in key sectors or areas. IRD Duhallow was successful in its application for additional funding under the Equality for Women Measure 2014/2015. €32,000 was awarded from the Department of Justice and Equality and the European Social Fund (ESF) through the Human Capital Investment Operational Programme 2007-2013. The aim of the Equality for Women Measure is to provide women with the social skills, education and training to enable them to enter or return to the labour market. In 2015, 102 women were engaged to complete a range of workshops and accredited/unaccredited training courses. The workshops included Assertiveness training, a Career Management workshop including CV preparation and interview skills and Effective Report Writing and Presentation skills. Six training courses were delivered including: Personal Development, Customer Service QQI Level 5, Frontline Skills for the Hospitality Industry, Occupational First Aid QQI Level 5, Keyboard Skills and Reception and Frontline Office Skills QQI Level 5.



Participants of the Grow Your Own Training course gain some practical experience. This programme was funded through the Local Community Development Programme.

Additionally, through the Equality for Women Measure the Working Group identified a clear need for the provision of mentoring for participants. Women were supported to explore their personal issues in a safe environment and enabled to gain a better insight and awareness of the appropriate services and supports available to them. It is hoped that funding through the Equality for Women Measure will continue, as activation strategies such as the EWM, that acknowledge the different work patterns of women, are crucial to support increased numbers of women back into employment.

## Equality for Women



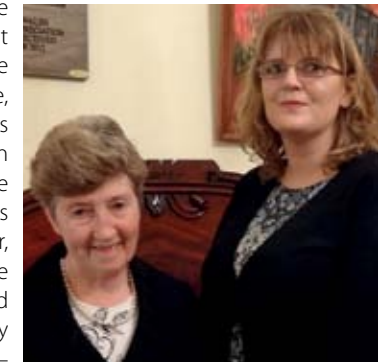
There was a large crowd in attendance at the "Mindful Living...Skills to manage stress in an increasingly demanding world" Seminar.

### Training

IRD Duhallow continues to access funding from a range of sources to deliver training to women including SICAP LEADER, Benefit and the Equality for Women Measure. Training courses included Up cycling/ Recycling, Grow Your Own training, Personal Development and Basic Computers to name but a few. Through the Duhallow Women's Forum a workshop was delivered on First Aid for both children and adults.

### Information Seminars

The Duhallow Women's Forum runs a series of information seminars throughout the year. These seminars are presented by experts and practitioners on women's issues and women's health. In 2014, the forum delivered a Pension and Budget changes seminar. For women, this seminar focused on a particularly motivating issue as women on average, earn less than men, have broken career paths, are more likely to be working part-time and also living longer than men. When compounded, all of these issues leave women particularly susceptible to poverty in later life. Colette Vaughan of the Newmarket Social Welfare office spoke about pension entitlements and also highlighted the changes that took place in the budget for 2015. In addition a seminar on "Mindful Living...Skills to manage stress in an increasingly demanding world" was held. We recognise that stress can mean different things to different people. We know it is difficult to measure, but we all know what it feels like and how we cope in stressful situations. It can be positive when it motivates us to get things done, however, it can be negative when we feel constantly pressurised or traumatised by too many demands. The question is – what can we do to look after our own well-being.



Judy O'Leary with guest speaker Colette Vaughan of Newmarket Social Welfare at the "Pensions and Budget Changes" Information Seminar held in 2014.

### Childcare

Under the guidance of voluntary boards the contribution community childcare facilities make to the local community and economy is significant, with 7 community childcare facilities providing an affordable and high quality childcare in the region, which in turn supports working parents and those furthering their education. IRD Duhallow recognised both the need to support managers and board members of such facilities to provide such quality care and established the North Cork Childcare Managers Network which acts as a forum for managers and provides a networking opportunity for them. Similarly voluntary board members were supported through volunteer board training, which was designed specific to the needs of each board and helped board with strategic planning, governance, HR and roles and responsibilities.



Triplets Cillian, Charlie & Ella Saville having fun with Martyna Wroblewska And Matthew Bradley during playtime at Newmarket Afterschools.



Kieran Murphy, IRD Duhallow Life Team demonstrates to children attending the Nature Detectives Camps how to track small mammals in the wood.

### Newmarket Afterschools

Celebrating 10 years in business, Newmarket Afterschools is now embedded in the community as a provider of top quality care and homework support for primary school aged children. We provide a full wrap around service with children collected from school by a passenger assistant on our bus followed up with a home cooked nutritious meal before receiving assistance with their homework. One to one support with homework has ensured that children who require extra support are helped along. Newmarket Afterschools, similar to the 6 other community childcare facilities in Duhallow, are helping to ensure that parents are able to continue to work or undertake training, safe in the knowledge that their children are cared for in a safe environment. In rural areas the lack of childcare and afterschool care can act as a barrier for many women wishing to work or partake in education but in Duhallow this barrier is being tackled.

Our Afterschools is also a Mecca for fun filled activities with games, arts and crafts and sports only a few of the activities of our camps which are held during school holidays.



Hard at work making queen cakes at this year's Easter Camp.



Mixing it up at the Easter Camp! A fun filled day of baking was had with children working in teams.



## Mental Health and Towards Occupation Programme

One in four adults will experience mental health difficulties in their life. Every human interaction represents an opportunity for one person to treat another with dignity — a dignity encounter. Individuals and families affected by mental illness can often describe what dignity should look like. Sadly, however, most experience something wholly different. To make dignity in mental health a reality requires everyone in the community to work together and make mental health visible, not something to be ashamed of. While depression is becoming somewhat publicly “acceptable” thanks to a major and sustained publicity campaign nationally with



Denis Keane proudly displaying his FETAC Level 2 Upholstery Portfolio which he successfully completed with the support of Tutor Jessica Baron.

celebrities speaking out, other forms and types of mental ill health are slipping even further into the shadows. When we talk about stigma, we are talking about using negative labels to identify people with mental health problems. Stigma has its roots in fear and misunderstanding. Many people hold negative opinions towards people with mental health problems because they do not understand the issues involved and because they are relying on myths and misconceptions.

The theme selected for World Mental Health Day in 2015 is “Mental Health and Dignity.” An approach to mental illness that incorporates dignity is the reverse of an approach that was widespread for many years – an approach that was based on social stigma and discrimination, and failed to recognise mental disorders as illnesses that deserve the same care and attention as physical illnesses. This year’s theme encompasses the contrast between dignity and stigma and the need for parity between physical and mental health.



Craft Tutor Trudy Taylor and TO participant Mary Rose Twomey admiring the intricate patch work quilt

### Mental Health & Employment

Unemployment not only creates economic disadvantage but it also decreases self-esteem and increases isolation and marginalisation. Once a person is labelled mentally ill, they are often discredited from full membership in the community solely as a result of that label and it sometimes defines the person as being incapable of work. There is a

distinct reluctance on the part of employers to employ those with mental ill health and therefore mainstream work prospects are bleak. Many people with mental illnesses take a non-linear route to employment over an extended period of time.

IRD Duhallow’s Towards Occupation (TO) programme is designed to support those who are distant from the labour market as a result of mental ill health /distress to develop the skills and confidence to achieve personal progression e.g. occupational fulfilment, employment, education, training, voluntary work, or other directions and to achieve other positive outcomes for the participants e.g. improved socialisation, reduced welfare dependency. Participants are assisted to identify and develop their employment and educational goals in a positive, flexible and supportive environment including

skills training, employment planning, support and follow-up services. This year participants undertook a suite of different training opportunities including: furniture recycling, FETAC Craft Level 2 Upholstery, Horticulture, Personal Development, Cookery and Art. Participants worked hard to submit their portfolios and projects for the FETAC accreditation. This programme is delivered by four other Local Development Companies in Cork and Limerick with the support of the Department of Social Protection, HSE and the Cork, Limerick and Clare Education and Training Boards. These partners facilitate a broad range of referral and progression opportunities and linkages.

IRD Duhallow also aims to support individuals who are often ‘invisible’ – difficult to identify or recognise: those who don’t appear as unemployed; those in the home – not signing on for welfare; unemployed whose spouses are employed; women in the household; and those who have not been entitled to claim social welfare as they may have been self employed in the past and do not pass the means test. These people are facilitated to re-integrate into a social network where they are supported (individually and within a group) through community development approaches to achieve their personal goals, improve their employment prospects and encouraged to adopt healthier lifestyles.



The Poly Tunnel and Therapeutic Gardens are a hive of activity at the TO plant sale in June



Rachel Budd,  
Horticulture Tutor



Barry Clarke, TO participant  
exhibiting his finished product

## Mental Health and Towards Occupation Programme



Participants of the Towards Occupation programme avail of a combination of different craft based training opportunities

### Peer Support Education Programme

IRD Duhallow delivered another successful Peer Support Education Programme to Transition Year Students in Scoil Phobail Sliabh Luachra, Rathmore earlier this year. This programme was designed and developed through a partnership of the HSE and National Learning Network as a result of the increasing number of suicides that are occurring. Staff from IRD Duhallow partook in training to enable them to deliver this programme to local schools in Duhallow. The ethos of this programme is about imparting on the participants how they may improve their listening and communication skills, and learn to assist someone in getting the appropriate support or intervention when they are in need. The programme focuses on referral and being proactive. It equips young people with the confidence to deal with difficult situations which they and their friends may encounter, such as crisis pregnancy, suicide, eating disorders, exam pressure and turbulent home situations. The programme places an emphasis on role play which studies have proven is hugely beneficial if a young person does find themselves in this situation. This year 21 students took part in the programme from Scoil Pobal in Rathmore.



Development Officer Mary Creedon with TY students from Scoil Phobail Sliabh Luachra, Rathmore who completed the Peer Support Community Education Programme



Ailbe Coffey, Lecturer with Irish College of Humanities and Applied Science congratulates Kate Bourke and Aoife Douglas who completed a Masters in Counselling and Psychotherapy.

### Emotional Support Service

Students of Counselling and Psychotherapy with the Irish College of Applied Humanitarian Studies, Aoife Douglas and Kate Bourke established an Emotional Support Service in IRD Duhallow as part of their accreditation process. Offering telephone listening and One to One Integrative Counselling, this new service is reaching out to those who were previously struggling but not accessing a counselling service due to a variety of reasons such as financial restrictions. The pair have met with over 20 clients since its establishment and provide emotional support to those going through times of difficulty. “A Journey of a thousand miles begins with a single step.”



Sheila O'Keeffe, RSS Supervisor speaking to the TO participants about Manual Handling

### Bereavement & Loss

The IRD Duhallow Bereavement and Loss Support Group provides a free and confidential service to people who have experienced a loss in their lives whether it is a loss through death, separation, divorce, job loss etc. For many the intensity of loss is unsettling, causing undue grief and sadness and this voluntary run service reaches out to those most in need. The provision of such a voluntary service at a local level helps to support those who may not have a family member or friend that they can turn to and are extremely vulnerable and isolated in their grief and loss. Local, trained volunteers meet clients at a time and place suitable to both, which ensures that even those with limited transport have access to the service. In a time where people’s lives are extremely busy and with stress a common feature, it is important that we take time out to cope with our emotions during difficult periods in life.



TO participant Kate O'Sullivan who is undertaking Horticulture training in the Therapeutic Gardens based on the grounds of the James O'Keeffe Institute, Newmarket.



## Social Enterprise



Christopher O'Brien, Tús participant upcycling an old kitchen chair for re-use.

### DUHALLOW REVAMP

Duhallow REVAMP is a demand deficient recycling and reuse social enterprise offering an innovative service delivery solution whereby refurbished, clean, and affordable furniture and household items are provided to the elderly population and low income households through a tiered pricing system. Unwanted, reusable furniture and household items including chairs, sofas, tables, lockers, chest of drawers, mirrors, wardrobes, shelving, kitchens, curtains, beds etc. are collected directly from the public. The donated items are inspected and screened before restoration and repair by the REVAMP team to ensure that they meet health and safety and cleanliness standards. Duhallow REVAMP also provide a refurbishment service for those who wish to have their old pieces upcycled, revived and returned. The community service integrates effectively and complements the existing suite of other programmes, services and third sector activity already being delivered successfully by IRD Duhallow. The social enterprise promotes a cleaner environment aiming to reduce the volume of waste for disposal by offering a green alternative and assisting local authorities in both Cork and Kerry to meet recycling and diversion from landfill targets thereby contributing to a reduction in 'greenhouse' gas emissions and fly tipping.



Tús participants, Adrian O'Callaghan and Maria Enright painting in the REVAMP workshop.

Duhallow REVAMP is currently operating through the Tús Community Activation Scheme & SICAP training with participants learning new skills in furniture repair and upcycling. However, there is a lack of continuity amongst scheme participants as Tús placements are for a period of 12 months only and therefore turnover is high and loss of skills from the project is frequent. Duhallow REVAMP needs the direction and guidance of a Coordinator and full time permanently based staff in order to fully realise the potential and economic viability of this enterprise. IRD Duhallow has made an application to Pobal for a new Community Services Programme for the project to employ a full time Coordinator and 5 Full time employees including: Accounts/ Admin/Sales, Craft



This old seat was given a new lease of life and returned to its owner through the refurbishment service of Duhallow REVAMP.

and Upholstery Operatives. Where possible (in terms of capacity) IRD Duhallow would like to provide some of this employment to those who are distant from the mainstream labour market e.g. individuals with a disability as a result of mental ill health.



Louise Buckley completes her Tús placement in Duhallow Community Laundry.

### Duhallow Community Laundry

Our newest community enterprise, Duhallow Community Laundry is now 1 year in operation and has already proven to be a successful community initiative. The Laundry is targeted at low income families, older people and family carers and is of significant benefit to them as it helps to lessen the pressure of having clean linen, towels and clothes available at all times. This Community Laundry targets those who currently are not accessing any laundry service. This affordable service helps those living on a modest pension as well as those caring for a loved one to manage all the tasks involved in being a family carer. A free collection and delivery service ensures that those who have limited or no means of transport are not isolated from using the service and the demand for this has affirmed the reality that many older people are dependent on family and neighbours for such outings. This high quality service that we deliver to the public is as a result of a team of highly efficient and responsible staff from our Rural Social Scheme, CE and Tús Activation Scheme who received training in customer care. With an ageing population in Duhallow it is no surprise that the majority of those using the service are older people. Following a research study commissioned by IRD Duhallow in 2007 on 'The Needs of Older People in Duhallow' it was identified that older people wished to remain living independently in their own homes for as long as possible and the development of this new service helps to promote independent living and complements other existing community enterprises such as Duhallow Community Food Services – Meals on Wheels and the Warmer Homes Scheme.



Tús Supervisor Sheila Roche, ensures Duhallow Community Laundry is accessible by the people the service is intended to target by collecting and delivering laundry to the homes of older people.

## Saoi - Network for Active Retired Groups

Duhallow has an ageing population which is considerably higher than that of the National Average. Older people are a huge asset to the society of Duhallow. They enhance our sense of community and have time to volunteer, become involved and are the drivers of many community led initiatives. Consequentially, they have a vast range of experience and expertise to offer.

### New Clubs

The Saoi Network promotes the development of new Active Retired clubs, and this year we were delighted to support the introduction of the new Sliabh Luachra Active Retired Club.

Based in Toureencahill, the new group has grown from strength to strength under the directorship of Lil Fleming since it was formed. This brings the number of Actively Retired Groups in the area to 19. The Saoi Network would like to acknowledge the support from Actively Retired Ireland who work collaboratively with us in the establishment of new groups.

### Get Fit for Life

The Saoi Network received funding from Cork Sports Partnership to organise Pitch and Putt classes for the Actively Retired. The Get Fit for Life Fund promotes actively ageing, and encouraging older people to partake in exercise and outdoor activities. These were held as part of the Bealtaine 2015 programme.

### Silver Surfer

Popular Millstreet man Seán Radley was the winner of the 2014 Google Silver Surfer Hobbies on the Net Award with Age Action. Nominated by the Duhallow Saoi Network, both Seán and Paddy Buckley of Banteer were among the shortlisted finalists to attend the Awards Ceremony in Google Head Quarters with renowned MC George Hook.



Members of the newly formed Sliabh Luachra Actively Retired Association. The group visited the new DCFS facility for dinner in April as one of their first activities.



Duhallow's Silver Surfers Seanie Radley and Paddy Buckley were among the 15 shortlisted finalists in the National Google Silver Surfer Awards.

### Boherbue Gramophone Club

LCDP supported the development of Actively Retired Groups. This year Boherbue Gramophone Club received funding for the purchase of a new sound system that is compatible with playing ipods for the Gramophone circle.

### Information Seminars

The Saoi Network frequently organises information seminars on topical issues of interest for older people. This year we had an information seminar on Hip and Knee replacement given by Physiotherapist David Angland and Dr. Brian O'Connell as well as a talk about online banking from Peter Doyle of AIB.



Saoi Network Vice Chair Noreen O'Regan and Chairman Jack Roche, making presentations to David Angland and Dr. Brian O'Connell at the information seminar on Hip and Knee Replacement.



Members of Duhallow Saoi Network, who officially launched Bealtaine 2015 with Jimmy Reidy of C103's 'Around the Fireside'.

### Bealtaine 2015

The fourth Annual Duhallow Bealtaine festival saw the success and prestige of the event go from strength to strength where 2135 people participated across the 31 events organised throughout the month of May. Bealtaine is a month long celebration of Active Retirement encouraging everyone over 55 to get out and about and try new things.

There really was something for everyone from Castlemagner's Dawn Chorus around the grounds of Ballygiblin house; An International Choral Concert in Boherbue Church; Cowboy Boots and Hats were very much to the fore at Donoughmore's Country Western Dance; Pattern Day Celebrations were held at Dromtariffe Well; Coffee Mornings; Traditional Evenings, Seisiúins and even a book reading from local legend Alice Taylor, meant that the month truly was a whirlwind of activity.

For many the highlight was Jack's Mystery Tour, and on the 19th of May the Mystery was finally revealed when 136 people found themselves on a bus tour to Vandeaur Gardens in Kilrush, the beautiful sights of Kilkee, over the ferry to Tarbert and on to the Lartigue Monorail and the Listowel Seanchai Centre.

Duhallow's first ever Seniors Expo featured many local services and agencies who work with the elderly coming together to answer questions and provide information on the supports and services available to older people.

### Promoting Life Long Learning

Throughout the year the Saoi Network promotes lifelong learning through the organisation of training courses such as Creative Writing, Photography and Photo Editing.



Participants of the Photo Editing Course with course tutor Justin Black.

### Care and Repair

IRD Duhallow's Care & Repair programme provides a small repair service to persons over the age of 65. This service is carried out by volunteers and is provided free of charge. The client only pays for materials used. For jobs that require a professional tradesperson, such as electrical or plumbing work, a database of reliable trade's people is kept to refer clients requiring this service. The Care & Repair also provides a regular friendly phone call service for elderly people who do not have frequent contact with a relative or friend.



## Warmer Homes Initiative



**Colm Crowley**  
Certificate in Business Studies,  
Diploma in Rural Development,  
IMCV Professional Manager Award

Colm joined IRD Duhallow in July 2007 as the Warmer Homes Coordinator. He is responsible for the day to day running of the scheme and works as part of the Community Services Team.

IRD Duhallow's Better Energy Warmer Homes Scheme (BEWHS) is funded by the Sustainable Energy Authority of Ireland (SEAI) and the Community Services Programme. 2015 saw the introduction of a new delivery model with community based organisations (CBOs) required to tender for works for the following 3 years. IRD Duhallow was one of 13 successful tenderers for the continued delivery of the service which is a reduction from 20 CBOs in 2014 to 12 with 1 private company also successful in this process. Now 10 years in operation at the end of 2014 we had insulated 2,976 houses. The qualifying criteria for the scheme remains the same whereby householders must be in receipt of Fuel Allowance or Family Income Supplement or Job Seeker's Allowance (For more than 6 months and have a child under 7 years of age). Homes must be owner occupied and constructed before 2006.



Installers Noel & Adrian Heffernan installing vents in line with new SEAI specifications.

A new requirement for 2015 sees the introduction of Mechanical Extract Vents to wet rooms (Kitchens, Bathrooms & Utility Rooms) in houses that receive cavity wall insulation works. This involves installing extract fans to the ceilings and wiring them back to the light switch. All wiring must be carried out by a suitably qualified electrician. These extra requirements will unfortunately reduce the number of houses completed.



Declan Doody carrying out cavity wall insulation.

### Expansion of service in Kerry

In the aftermath of SEAI's new tender process, the number of CBOs operating in Munster has been reduced from 8 to 3. With all 3 remaining CBOs based in Cork and the rest of Munster void of any CBO delivering this service in their counties, IRD Duhallow, with the permission of SEAI, is expanding our service to deliver the BEWHS to all of Kerry and we will subcontract some of these houses to Cúnamh Energy Action in Tralee, who was a CBO previously.



Liam Buicke leads the Cavity Wall Team which requires the drilling of walls prior to installing cavity wall insulation.



Attic Insulation Team Niall Guiney & Niall Burke carefully laying attic insulation.

### Area & Community Based Programmes

For the third year running, IRD Duhallow was approved for the delivery of the SEAI Area and Community based projects. Three estates with a total of 44 houses in O'Callaghan Park Kanturk, Batt Donegan Place Charleville and Westbrook Court Mallow all received funding for deeper retrofit works from SEAI under the scheme in 2014 in partnership with Cork County Council and Mallow Town Council. Works included attic and wall insulation, window and door replacement, boiler upgrade, chimney draught limiters and Building Energy Rating (BER). Northside Community Enterprises (NCE) in Cork was the lead applicant with IRD Duhallow assisting with the project management, insulation and BER works. 3 community buildings in Killarney and Freemount also received insulation works under this scheme which was delivered in partnership with Enprova and EPS. IRD Duhallow's installers carried out insulation works in these buildings.

### Local Employment

IRD Duhallow receives funding from the Community Services Programme (CSP) enabling us to employ 1 coordinator and 5 full time staff to deliver the service. With the additional workload involved in expanding our service to Kerry, we have applied to Pobal for funding for an additional 4 full time staff under the CSP programme. The RSS, CE, and Tús schemes continue to supply participants who work alongside CSP staff in teams insulating attics and cavity walls. In 2014, IRD Duhallow subcontracted the delivery of Building Energy Rating Certificates (BERs) to 3 local BER Assessors.



Noel Heffernan installing external soffit vents ensuring sufficient ventilation is present after insulation works are complete.

### Training & Quality Assurance

Ongoing training for all installers is very important to ensure that we continue to deliver a high quality service. Attic crews have received FETAC Thermal Insulation training with our cavity wall crews having undertaken Envirobead Insulation training. All installers hold a current Safe Pass and have completed Manual Handling, mobile tower scaffold and Working at Heights training. Four of our staff completed Project Supervisor Construction Stage (PSCS) training. Our cavity wall system is certified by the National Standards Authority of Ireland (NSAI) who conducts yearly audits to ensure we deliver our service in accordance with our certificate. We continue to operate and maintain an Integrated Management System which includes ISO9001 (Quality), ISO14001 (Environmental) and OHSAS 18001 (Safety).

Patricia and Tommy O'Neill Kanturk enjoy the comforts of their newly insulated home under the BEWHS.



## Community Employment Scheme



**Paddy O'Connor**  
C.E. Supervisor

Paddy has been the IRD Duhallow CE Supervisor for over fourteen years and throughout this time, has gained valuable experience in supporting participants to get the most from their CE placement. Paddy is responsible for the supervision of the Twenty-eight scheme participants, and liaises with the communities to ensure the best possible support for their community work. Paddy also has qualifications in Health & Safety and is IRD Duhallow's designated Health Safety Officer.

### IRD Duhallow's CE Scheme

Community Employment provides a unique opportunity to participants to develop their skills and abilities while undertaking valuable work in a community setting. The scheme is ideal for the long term unemployed who are looking to develop their skill set and build up their self confidence through returning to regular employment. CE offers a pathway to employment for people who have lost their jobs and need to retrain in order to re enter the workforce. Our current scheme employs Twenty-eight participants who work across the communities of Dromtariffe, Rathcoole, Boherbue, Ballydaly, Kilcorney, Banteer, Lyre, Furniture Revamp and the Duhallow Community Laundry in Newmarket.



Paula O'Callaghan provides administration support as part of her CE Duties.

However, in spite of the recorded success of CE, the budget within the scheme is being continually cut, with significant decreases once again being implemented in the Materials and Training budget this past year. It is disappointing to witness that training has been cut, as it is the focal point of CE on which emphasis should always be placed, to develop participants so that they are in a better position to gain employment post their placement. Furthermore, we have seen an increase in the costs of Administration, Personal Protective Equipment, Insurance etc, which makes the scheme tougher to manage. IRD Duhallow has had to resort to small donations from the sub sponsors in order to maximise the efficient use of the limited resources.

Due to changes in the Department of Social Protection's Area bounds, IRD Duhallow's CE Scheme bid a fond farewell to Philomena Hallinan, who was HEO of



Martin O'Neill setting up Rooms in the James O'Keeffe Institute for meetings.



Philomena Hallinan, Higher Executive Officer, receiving a presentation on her final day after 10 years working with Community Employment Schemes in North Cork, with Maura Walsh CEO, Eileen Linehan Assistant Manager, and Paddy O'Connor, Supervisor.

the scheme for the past 10 years. We welcome the new officer Lorraine O'Connell, who is based in Mallow, and look forward to working with her in providing quality and meaningful CE placements for all our participants.



Thomas Healy working on the flower beds in Banteer Village.

### CE Positions

Over the past twelve months IRD Duhallow has seen a large increase in the number of people enquiring about vacancies on our Community Employment Scheme. This is in spite of the changes to the application process, as now, people must go to their local Case officer in the Department of Social Protection, to apply for a Community Employment vacancy, who will then submit their name to the CE Supervisor if they think the vacancy will suit the particular client. This adds another layer of bureaucracy for people looking to apply for a position and can be perceived as quite off putting for people who are distanced from the labour market as they must liaise with a number of different individuals. However, the vast majority of people are still contacting IRD Duhallow as a first point of call in seeking a CE position and are then referred back to the DSP case officer.

### Participant Development Through Training

Training and retraining is a key focus of the IRD Duhallow Community Employment Scheme. However, due to the cut backs in the training budget, the DSP will only part fund accredited training courses which have a FETAC, City and Guilds or other Certificate qualifications. Participants have to make a contribution towards the course fees themselves, which can be extremely difficult for them.

IRD Duhallow strives to identify the needs of local employers in order to focus training in areas where real job opportunities exist locally and this is facilitated through the IRD Duhallow Job Centre. The supervisor works closely with each participant in developing a specific training plan tailored to their individual needs.



Patrick J. O'Sullivan painting inside Ballydaly Church.

Over the past year participants took part in 1st Year Accounting Technician, ITEC Diploma Physical Education, Child Health and Well Being, Back to Return Education, Train the Trainer, Manual Handling, Bookkeeping, Accounting / Bookkeeping computer software Sage, Safe pass, Interview skills, and CV preparation courses.

Three participants progressed into full time employment this year.



Paddy O'Connor, Supervisor explaining what work needs to be done to Tim Tarrant at Dromtariffe Community Centre.



## Rural Social Scheme



Supervisor Sheila O'Keefe Supervisor Michael Corcoran

Since its launch in 2004 the Rural Social Scheme has supported over 124 low income farm families in Duhallow. The scheme has grown in strength over the intervening years and is now firmly embedded in the social fabric of the region, providing vital support to Community Groups, Clubs and Associations.

**In 2014 the RSS provided 52,416 hours of labour support to 40 community and voluntary groups in Duhallow.**

### Low Income Family Farming

The UN declared 2014 an International Year of Family Farming. The EU Commissioner Dacian Ciolos emphasised that over 95% of farm holdings in the EU are family farms, and that "family farms are the foundations on which Europe's Common Agricultural Policy was built. They continue to stay at the heart of European Agriculture as robust generators of competitiveness, growth and jobs, of dynamic and sustainable rural economies".

The RSS allows 56 farmers in Duhallow who are unable to earn an adequate living from their farm holdings to earn a supplementary income by working 19.5 hours per week. The strong work ethic and unique skills and talents of the participants are heavily invested in communities throughout the region. A spouse, child or sibling can take up a place on the scheme in place of the original applicant if they wish. Participants have availed of a number of training opportunities in the past twelve months which will benefit them both in their work out in communities and on their family farms.

Training includes: Chainsaw, Ditch Building, Quad Bike, Strimmers Safety, Safety at Heights, Safe Pass, Manual Handling and Health and Safety on the Farm.



Billy Curtin and Neily Cronin, both fully qualified in chainsaw use, cutting trees following the storm damage of February 2014.

The social dimension of the scheme cannot be understated. Social isolation is considered a prime cause of depression and other forms of mental illness among the rural population. Low income farmers can find it difficult to manage financially and to cope with the escalating pace of change and regulation of modern day Agricultural practices and inspections. Higher rates of suicide are evident in rural areas as rates tend to escalate with levels of rural remoteness (Teagasc, 2012). The RSS provides vital social contacts for participants resulting in increased self esteem and independence. In addition, the RSS has been a godsend to



Joan Murphy working at home feeding cattle.

Joan combines her work on the farm in Dromagh with administration work for the RSS and the Community Laundry.



many women who married into small unviable holdings. These women are very often even more isolated than their spouses, as many are not originally from the area and have little or, in some instances, no access to social networks.

### Civic Pride & Community Spirit

The RSS supports the positive development of the built, cultural and natural heritage of each and every rural Town and Village in Duhallow. By working closely in a supportive role with a wide range of community and non-profit groups, the RSS has helped to create a sustainable community volunteer culture with a constant flow of projects and work that is contributing to the character and appearance of the region. Importantly, the RSS has helped to spread the work-load so busy community individuals don't carry the entire burden alone. This sustainable assistance provided through the scheme has played a strong role in stimulating and increasing levels of voluntary activity. The support of RSS participants has enabled local volunteers to focus on community planning, coordination and improved project management and financing.



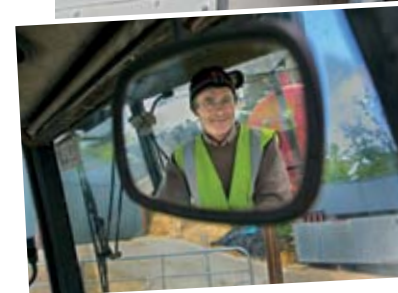
RSS Participant John Cronin works as a driver with DCFS, each order must be carefully checked before delivery.

Many local community groups and sporting organisations in Duhallow have been severely affected by the large scale emigration of young club members over the past five years, which has left many rural clubs struggling for their survival. Participants on the RSS continue to provide maintenance and caretaking support for many community and sporting facilities throughout Duhallow, increasing their capacity and allowing groups to sustain and, in some cases, expand the range of community activities in place. In addition, the RSS continues to support vibrant social economy activity in the region, which has an ageing population, who are often isolated and cash-strapped. Participants are placed in Duhallow Community Food Services, the Warmer Homes Scheme, Community Laundry, Care and Repair and Duhallow REVAMP.

## Rural Social Scheme



Brendan Cronin, RSS participant, unloading a van after a community meeting and at home helping his brother feed the animals.



### RSS Support to Rural Schools

Many of the rural schools in Duhallow are small 2 and 3 teacher schools in remote areas with dwindling populations. Consequently, dwindling pupil numbers means that government grants don't cover the costs of external maintenance for buildings, many of which are old traditional structures. Urgent works for flat roofs, heating boilers, wet rot damage to windows and dampness take priority over power-washing, painting and the general cosmetics of the buildings. The RSS continues to support Parent Councils, who pick up the tab while power-washing and painting schools during the Summer months. Community involvement brings people together and gives them opportunities to assess the conditions in schools, which are often focal points in rural communities. Even though some have been forced to close, many vacant schools have been converted into local community resource centres with RSS active in their maintenance and operation.

Con S Murphy & Dermot Murphy painting the Community Centre in Aubane.



Eileen Moynihan, RSS participant, tutoring members of the ageing population in Duhallow who are 'digitally excluded' as part of the Benefit 4 training programme.



John McCarthy and Danny O'Donoghue fencing with the LIFE + project.

### Environmental Commitment

The RSS, aided by the technical support of the LIFE Environment Programme, encourages environmental community action. RSS participants have erected fences, installed silt traps in newly open drains, inserted cattle troughs with solar pumps to keep cattle out of Special Areas of Conservation (SAC), all with the co operation of land owners. These necessary provisions will ensure that there is a reduction in nutrient run-off from land, adequate stabilisation of river banks and reduction of silt entering the rivers. Participation on the scheme has helped to increase awareness of the need for water management practices in rural farming communities, who generally need more water than the rest of the population.



Tony Ahern, farmer, explaining the workings of the Solar Power Pump to RSS participants Joe Sexton and Davie Joe Breen.

IRD Duhallow has joined forces with the Southern Regional Authority and the EPA and established the first "River Catchment Management Group".

### Walking and Cycling

IRD Duhallow is actively involved in developing a Walking and Cycling Policy for the entire County of Cork. IRD Duhallow's Social Economy working group continues to examine the recreational potential of our natural resources and our unique culture and heritage. The Walks Scheme for the Duhallow Way Walk which stretches 29km East to West through the region provides funding for 26 local private landholders who cooperate to maintain and upgrade their portion along the route. The RSS continues to develop and enhance Claragh, Mt. Hillary, Mullaghareirk and the Source of the Blackwater Looped walks, all of which are accredited by the National Trails Office.

Gerard O'Sullivan assisting with the enhancement and maintenance work in Shrone along the Duhallow Blackwater Way.





## Tús Community Workplace Initiative



Supervisors John Daly, Gerald O'Connell, Sheila Roche, Joe Pierce, Don Murphy, Danny McAuliffe and Con O'Sullivan

IRD Duhallow now boasts 8 Tús Schemes, with an allocation of 160 participant placements since being approved the most recent eighth scheme by the Department of Social Protection in July 2014. Participants work for 19.5 hours per week for a duration of 12 months. Tús Supervisors identify the type of work placement most suited to the participant's needs and aspirations based on the participant profile interview prior to commencing on the scheme. They receive the same statutory (pro rata) annual leave and public holiday entitlement as other employees. Participants have regular communication with their allocated Supervisor who assist them with their progression and career planning and to identify any new personal training needs. In addition, Supervisors provide any additional information they may require with regard to the integrated suite of supports available through IRD Duhallow and other local agencies.

Exit interviews are conducted with participants and ongoing monitoring allows us to map the varied pathways people take after leaving the scheme. Participants on Tús can seek to engage in a Community Employment (CE) scheme on completion of Tús. Statistics are collated at a local level using the Pobal One View Online Tracking System. This information feeds into the national database which is used to monitor the scheme nationally. Following a recent Training Needs Analysis (TNA) which was conducted in preparation for the Duhallow Skillnet application IRD Duhallow's Enterprise Working Group identified a number of key area skill shortages for employers in Duhallow including Care of the Elderly, Fork Lift Training, and Confined Space Training etc. In tandem with this, the Employment and Training working group conducted a TNA with the



Our Tús Supervisors Sheila Roche and Sheila O'Keefe interview each new Tús participant prior to commencing work on the scheme to ensure that each participant can get the most out of their work placement.

unemployed including past and current Tús participants and those registered with IRD Duhallow's Job Centre. This data has allowed IRD Duhallow to begin to bridge the gap between employers and the unemployed in Duhallow in terms of current and required levels of knowledge, skills and abilities.



Finola O'Sullivan utilises her talents by taking pictures for the Life Project as part of her placement.

**529 people have completed a community work placement with IRD Duhallow since the introduction of Tús in 2010.**



Tadseusz Zolopa with Damien McGrath, Micheal Scannell and Timothy Moynihan working in Rathmore Village Renewal project

### Assisted/Self-Referral

While the majority of people referred for Tús are selected on a random basis by the Department of Social Protection, 20% of available places can now be filled by assisted or self-referral. The assisted/self-referral affords people who fulfil the qualifying criteria the opportunity to avail of short-term quality work placements and break the cycle of unemployment which is so prevalent in the region. IRD Duhallow is working closely with the local DSP Case Office Martina O'Connor who is assessing all applications for eligibility and suitability. To qualify for Tús, a person must be unemployed for at least 12 months signing on 'and currently in receipt of Jobseekers Allowance. A free fuel allowance and rent allowance will continue to be paid to those who fulfil the qualifying conditions prior to joining Tús.



Orlaith Tomkins speaking with Principal Officer of the DSP TJ Fleming about work placements offered at DCFS.



John Humphreys and Thomas O'Driscoll erecting a community sign in Cecilstown

## Tús Community Workplace Initiative

### Community

#### Conservation Projects

The James O'Keefe Institute together with a number of agricultural out-buildings are designated protected structures as they are considered to be of special interest from an architectural, historical and cultural point of view. The sensitive restoration of these buildings including works to the main house, the pantry, the smoke house, the Court Yard etc. have been carefully carried out by Tús participants who are eager to learn new skills under the appropriate supervision and guidance. The innovative conservation works reached the final stages of the Europa Nostra Awards. These awards celebrate exemplary restorations and initiatives of the many facets of Europe's cultural heritage. The judge, Philip Geoghan, a conservation architect highly commended the traditional building projects which have been carried out in line with recommendations from the Architectural Conservation Officer Mona Hallinan, Cork County Council.



Daniel McCarthy and Joe Noonan honing their skills in traditional lime plastering.



Alan Brown and Francis Healy working on the re-siding of courtyard roof

### Agricultural Vintage Machinery

A large amount of agricultural machinery and rural Irish life artefacts have been donated to IRD Duhallow. The extensive 18th – 20th century collection includes carts, ploughs, threshing machines etc. IRD Duhallow will house this collection of vintage agricultural machinery in a newly renovated out house farm building on the grounds of the James O'Keefe Institute. The capital works for which, have been funded through IRD Duhallow's LEADER 2007-2013 programme. With assistance from the International Charity Bazaar, IRD Duhallow will now be able to provide a workshop space for the restoration of these machinery and tools under the training and guidance of qualified tutors. As well as promoting and preserving Ireland's rural heritage this project will aim to recreate "hands on learning" workshops of traditional



Denis P O'Donoghue restoring an old milking machine. Many of our Tús participants are involved in local heritage projects.



"Putting a Shoulder to the Wheel" Noel Troy carefully restores a Hay Rake as part of the work on the Duhallow Agri Museum.

trades including blacksmith, cooper and wheelwright. Educational sessions designed for school groups, young people and families will provide a great destination for anyone interested in experiencing rural traditions.

### Youth Employment Initiative (YEI)

Although youth unemployment has fallen nationally, it is still too high, at more than twice its pre-crisis level (Pathways to Work, 2015). The scale of the problem is also masked by a very significant increase in the number of young people re-entering or remaining in education and a very considerable increase in the number of young people emigrating. For many under 25's, the economic crisis has dominated their whole adult lives. Compared with older unemployed, young people often lack the experience required by existing vacancies and hence find themselves in something of a "Catch 22" situation of needing experience to gain employment but needing employment to gain the desired experience. The Self Referral option now offered through Tús will allow young people to access quality work placements in areas of work which they would like to pursue into the future.



Louise Buckley and Stephanie Barrett serving at the Cork Choral Festival Bealtaine Event in Boherbue Hall.

The European Social Fund has additional dedicated funding provided under the Youth Employment Initiative (YEI) and aims to assist Members States in their efforts to put their Youth Guarantee implementation plans in practice. The Youth Guarantee calls on countries to offer young people an education, training or work experience intervention within four months of leaving education or entering unemployment. Tús payments to under 25s are eligible expenditure to be submitted for ESF co-financing for the period 1st May 2015 to 31 December 2017. IRD Duhallow currently has 19 under 25's participating on the Tús scheme.



Involving people in their local communities, Ronald Smith maintains the green ways in Cullen Village.

### Onwards and Upwards

21 year old Laura joined IRD Duhallow's Tús Scheme in September 2014. From an early age she had helped her mom with a family run B & B and she wanted to get some work experience in the catering and hospitality sector. Laura immediately showed flare for this type of work and ably assisted with the set up for conferences, seminars, training etc. Spurred on by IRD Duhallow's Employment & Training Development Officer, Laura worked up the courage and enrolled in a 'Frontline Skills for the Hospitality Industry' through the Equality for Women Measure. On completion, she successfully gained employment as a Hotel Receptionist with The Riverside Hotel in Killarney. Laura said "Tús gave me the confidence I needed to apply for Jobs. It helped me to believe in myself".



Laura Kendall, a past Tús participant who with the experience gained in IRD Duhallow recently gained employment in the hotel sector in Killarney



## Duhallow Community Food Services



Orlaith Tomkins has over 8 years service as Manager of DCFS. She is responsible for managing the daily operations throughout the business and has overseen the expansion of the service to the new premises in Newmarket. She holds a degree in Hotel and Catering Management and has many years experience working in four and five star hotels abroad prior to returning to Ireland.

Seventeen years in operation, DCFS' primary aim continues to be to provide a hot meals service to help improve the quality of life and support some of the most vulnerable people in our region. The objective has remained the same through the years; it is to facilitate healthy independent living for those who wish to remain in their homes, to make a major difference to the health and quality of life of older or sick people by removing the worry of having to provide a hot meal every day.

2014 was a very exciting year for DCFS. In addition to the facility in Boherbue, the company expanded services to the new premises at the JOK Institute, Newmarket. The addition of the new facility has provided the rural meals service with additional space to further increase output to meet with the ever increasing demand of the rural elderly. Further to this, DCFS is delighted to have a new service available in the Community Dining room. Here, senior citizens can have their daily meal in comfortable surroundings where they can meet other people and get out of the house for a while. It also provides a call in point for clients who prefer to collect their meals instead of having them delivered to their home.



Henry Howard receives a meal from driver John Cronin, RSS. DCFS is not just a meals service, our drivers calling help to alleviate the loneliness that can come with living in a rural isolated area.



Breda Curtin and Moira Murphy preparing meals for delivery in the new purpose built kitchens in the James O'Keeffe Institute.

Isolation and loneliness is a huge issue in rural Ireland and the Community Dining room goes some way to alleviating this problem in providing a place for people to meet and chat.

This past year, DCFS produced and delivered 30,000 meals throughout the region. The demand is increasing year on year with the elderly population of Duhallow on the rise. DCFS, in conjunction with IRD Duhallow Saoi Network are now equipped to meet the demand well into the future with the addition of the new facility.

As a demand deficient enterprise, DCFS needs to engage in commercial activity in order to subsidise the Meals service, which receives staffing funding from CSP and a smaller grant from the HSE. Since its inception in 1994, DCFS has been engaging in home baking supplying local shops and retail outlets as well as a catering service from finger buffets to more formal sit down events. We also supply healthy lunches to Boherbue Comprehensive School. These streams of revenue are extremely



Pictured at the Duhallow Business Awards, at which DCFS provided the catering: Breda Moynihan Cronin, Chair of DCFS, Cllr. Timmy Collins Deputy Mayor of Cork County Council and Board Member of DCFS, with Eileen Linehan, Assistant Manager of IRD Duhallow.

important to secure the future of the meals service for our elderly population. DCFS also supports local jobs and business by purchasing ingredients from local suppliers, spending in excess of €160,000 locally last year.

The company is managed by a board of 19 voluntary directors and is fortunate to have a long serving dedicated team of supervisors; Neily O'Flynn, Transport and distribution; Iwona Lonewska, Meals and Outside Catering; Rose Drew, Bakery; and Mary O'Connell School Catering Supervisor. The staff is made up of participants from the Community Services Programme, the Rural Social Scheme and Tús scheme. DCFS has been viewed as an excellent example of how different schemes can integrate and provide valuable employment opportunities for those who have been distanced from the labour market while simultaneously providing a valuable community service. Within the schemes, the CSP programme provides sheltered work opportunities for those that may find it difficult to find work in main stream employment, the RSS provides low income farmers with additional income for working 19.5hrs per week and the Tús participants who have been unemployed for over 12 months, are provided with valuable work experience. This experience can be transferred to the food industry which improves their work prospects for the future, as this area is experiencing huge growth. We are also indebted to the volunteers who give so generously of their time to assist with deliveries.



Renowned chef Clodagh McKenna paid a visit to the DCFS stand at the National Ploughing Championships and met with Brigid Ide Walsh, Breda Curtin, Orlaith Tomkins and Neily O'Flynn (DCFS) and IRD Duhallow staff Gerald O'Connell, Billy Dennehy and Louise Bourke.

### Former Chairman, the Late Noel Dillon

Noel was chair of DCFS for the past 9 years. A true public servant, having served at the highest level of Local Government, in his retirement, Noel gave of his time voluntarily and generously to serve the people of this region. His commanding presence, vision and common sense approach supported DCFS to develop its service and indeed its new facility in the JOK Newmarket. Noel passed away in May this year following a short battle with Cancer, and continued to attend meetings in Newmarket until last March, such was his dedication. Noel will be greatly missed by us all.

*Ar dheis dé go raibh a anam dílis.*



DCFS Administrator, Olive Casey has worked with the Social Enterprise for the past 13 years.



The late Noel Dillon will always be remembered for his trojan work throughout his time as Chairman of DCFS.

## Community Groups in Duhallow

### South Eastern Duhallow Communities

Aubane  
Banteer  
Bweeng  
Derrinagree  
Donoughmore & Stuake  
Firmount  
Kilcorney  
Laharn  
Lyre  
Millstreet  
Nadd  
New Tipperary  
Rathcoole

### IRD Duhallow Representatives

John Kelleher & Celeste Buckley  
Denis Withers & John Kirwan  
Jeanette O'Connell & Sean Kelly  
Tom Meaney & Charlie Drake  
Patrick Buckley & Monica Kennedy  
Margaret O'Donovan & Peter Cafferkey  
Donie Howard & Neil O'Shea  
Eileen Forde & Sheila Crowley  
Billy Murphy & Richard Murphy  
Noel Buckley & Veronica Perdisatt  
Clodagh McSweeney & Paudie O'Shea  
Mamie O'Shea & Tony Horgan  
Eamonn Hurley & Liz Burns

### Western Duhallow Communities

Ballinahulla  
Ballydaly  
Ballydesmond  
Boherbue  
Cullen  
Foilogohig  
Glash  
Gneeveguilla  
Kiskeam  
Knockaclarig  
Knocknaboul  
Knocknagree  
Meelin  
Rathmore  
Rockchapel  
Shrone  
Taur  
Tourencacahill

### IRD Duhallow Representatives

Liam Doody & Betty Collins  
Richie O' Connor & WJ Moynihan  
Siobhan Moynihan & Dan O'Connor  
Margaret Murphy & Marie Casey  
Patsy Jones & Lorraine Singleton  
Annette O'Reilly & Geraldine Cremin  
Mossie Fitzpatrick & Timothy Collins  
Cormac Collins & Yvonne Crean  
Paddy Joe O'Leary & Batt Casey  
June Walsh & Ide Fitzgerald  
Maureen Fleming & Tim Fitzgerald  
Geraldine O'Connor & Claire Fleming  
Eileen Kelly & Denis McAuliffe  
Brian Kelly & Marie O'Leary  
Mike Allen & Breda O Callaghan  
Conor Creedon & Colette Carmody  
Batt O'Callaghan & Jeremiah Murphy  
Bertie O' Leary & Lil Fleming

### North Eastern Duhallow Communities

Castlemagner  
Cecilstown  
Dromtariffe  
Freemount  
Kanturk  
Kilbrin  
Lismire  
Newmarket  
Tullylease

### IRD Duhallow Representatives

James Twohig & Andy Bourke  
Kieran Butler & Angela O'Herlihy  
Donie Forde & Deirdre Forde  
Caroline O'Carroll & Mike O'Regan  
John Fuller & Tommy Mullane  
Patrick Drumm & Patricia O'Leary  
Colman Jones & Sheila Kearney  
Eilish Hourigan & Ollie Dugdale  
Angela Hannigan & Mary O'Connell



# IRD Duhallow



James O'Keeffe Institute, Newmarket, Co. Cork, Ireland

Telephone: 00-353-29-60633

Fax: 00-353-29-60694 • Email: [duhallow@eircom.net](mailto:duhallow@eircom.net)

[www.irdduhallow.com](http://www.irdduhallow.com)

*Duhallow*

THE SPIRIT OF RURAL IRELAND